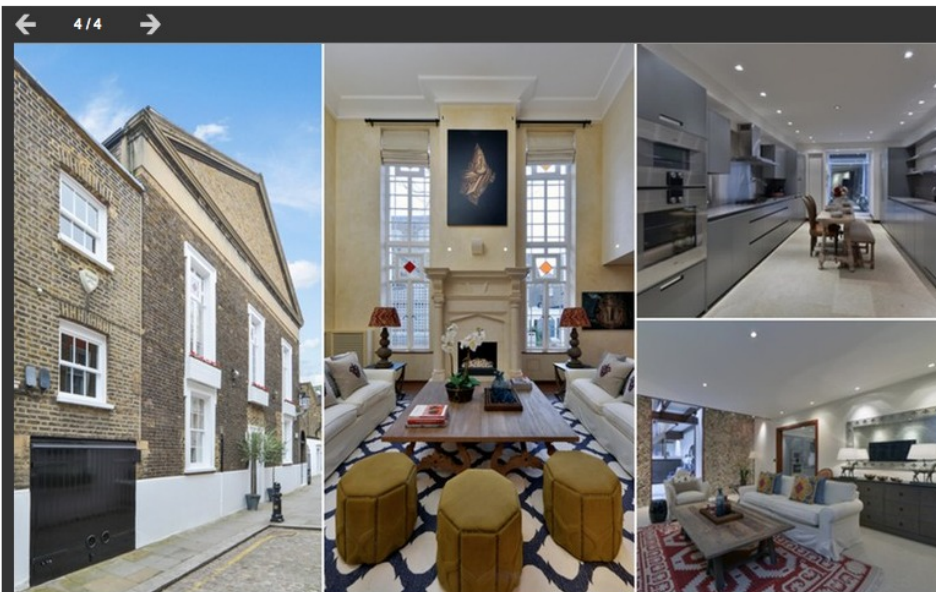


# Great heart: home with surprising interiors – in pictures

A slim terrace in Bury St Edmunds to a small cottage in Ayleshire with an unexpectedly large living area

[f Share](#) 20  
[t Tweet](#) 35  
[g+1](#) 2  
[in Share](#) 0  
[Email](#)  
[g](#)

Anna Tims  
theguardian.com, Friday 25 July 2014 13.31 BST



### Surreal estate: South-west London

In the heart of London's Chelsea is this unusual freehold house, originally an 18th century court house and jail where prisoners were tried and taken to prison ships waiting on the Thames to transport them to a penal colony. Comprising a main house and an adjoining mews style guesthouse connected via a courtyard garden, it has a total of seven bedroom suites and five reception rooms, including a stunning double-height sitting room. Priced at £14.5m.

Russell Simpson, 020 7225 0277

Photograph: Russell Simpson



Money  
Property · Mortgage rates

Life and style  
Homes

Series  
Snooping around

More from Snooping around on

Money  
Property · Mortgage rates

Life and style  
Homes

More galleries



**Wet and wild: canals to cityscapes – in pictures**  
From a canal-side abode to a manse of splendid isolation in the wilds of Argyll



**Historical connections – in pictures**  
From a well-groomed house near Shakespeare's birthplace to a stone cottage in the Borders in need of some grooming



**Heavenly homes - in pictures**  
From a saintly London church tower to a quaint Scottish farmhouse

### More from the guardian

What British Jews really think about the Gaza conflict  
23 Jul 2014

Home and away: needs work  
29 Jul 2014

Jacqueline Bisset: 'Older women continue to want sex but men don't want to sleep with them'  
24 Jul 2014

Citroën C1 named Which? most dependable car  
25 Jul 2014

When applying for a loan, make sure you speak to a banker of the same sex  
28 Jul 2014

### More from Snooping around

Previous:  
[Gallery \(4 pictures\)](#): 18 Jul 2014: Snooping around - in pictures

[Snooping around index](#)