



## **RUSSELL SIMPSON**

Elegant three-bedroom apartment in  
a desired Kensington address

YORK HOUSE  
KENSINGTON W8

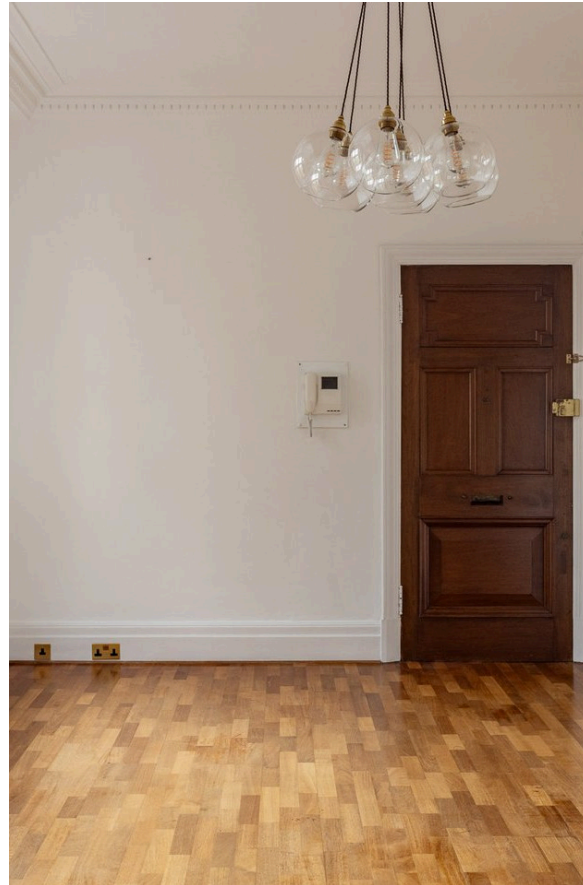
York House

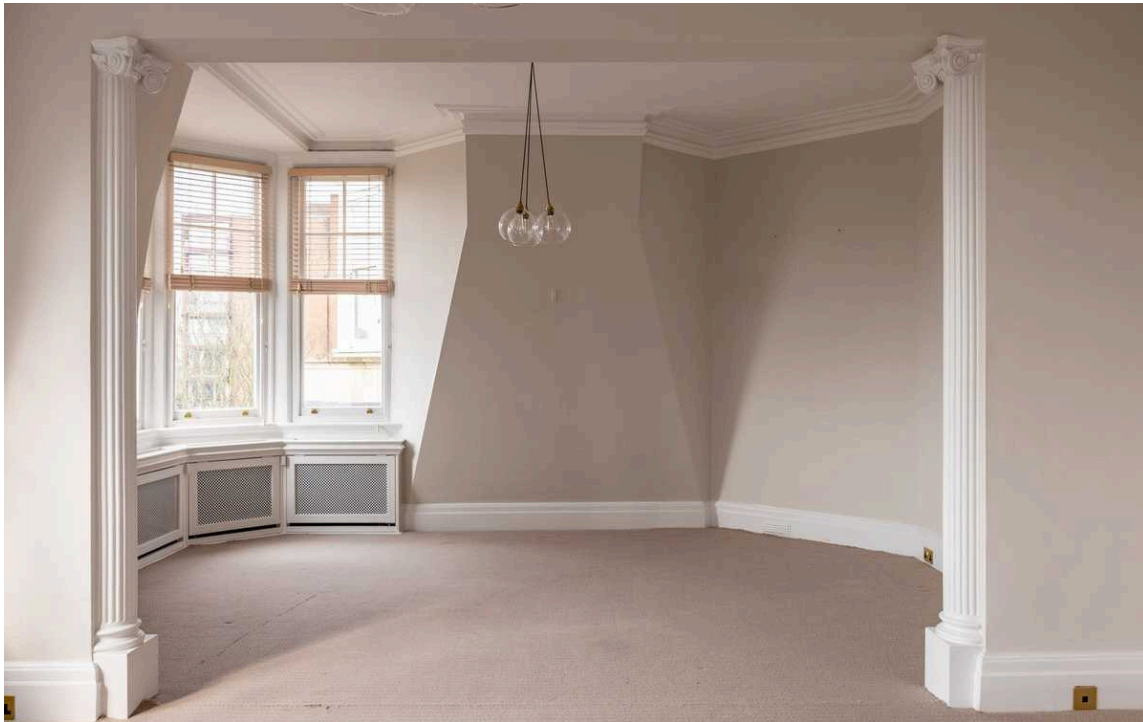
£3,250 <sub>P/W</sub>

BEDROOMS 3	INTERNAL  2,476 <sub>SQ FT</sub>  230 <sub>SQM</sub>	OUTDOOR —	FURNISHED STATUS Unfurnished
BATHROOMS 3		EPC —	COUNCIL TAX RBKC, H

## The Property

Set within York House, a grand mansion block in the heart of Kensington, this three-bedroom apartment offers refined period charm with modern touches, generous proportions, and secure gated access.

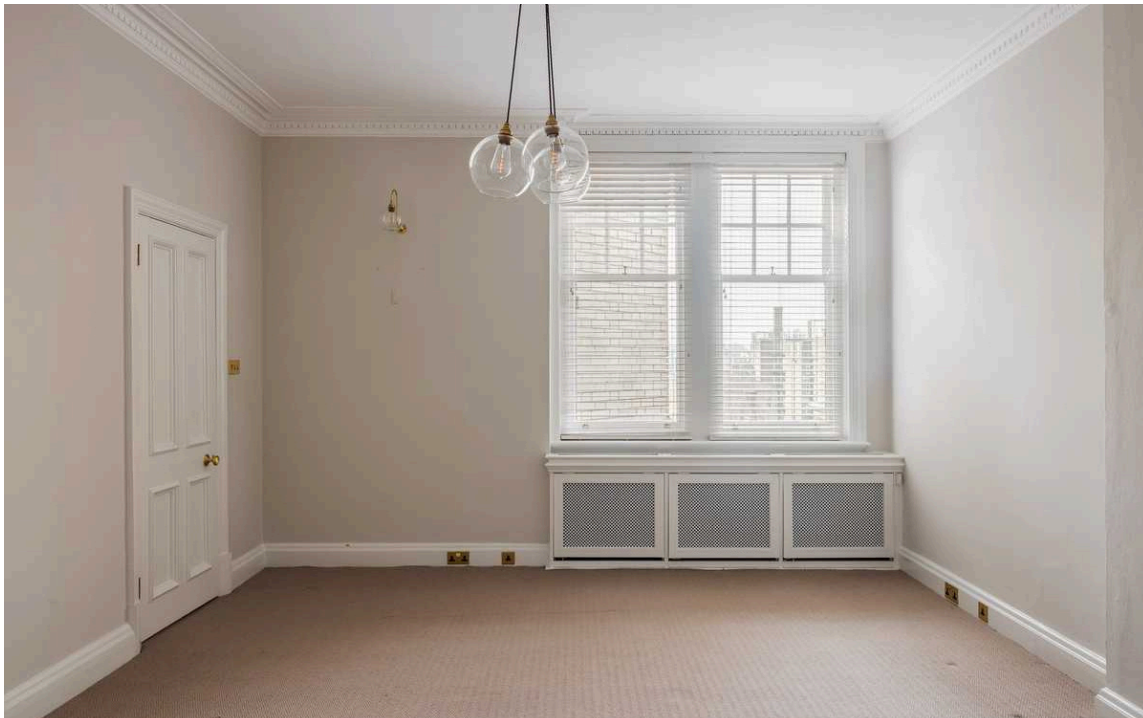




## Indoor Spaces

Positioned on the sixth floor, the apartment is introduced by a spacious entrance hall, setting the tone for the generous proportions throughout. High ceilings, large sash windows, and intricate detailing enhance the sense of space and light, while a neutral palette and contemporary finishes create a calm and sophisticated living environment.

A formal reception room features a grand bay window and original fireplace, with an adjacent study/sitting room providing additional versatility. The modern kitchen is fitted with sleek cabinetry and integrated appliances, while a separate laundry room adds convenience.







## The Bedrooms

The principal bedroom includes bespoke wardrobes and an ensuite shower room with a double vanity and modern tiling. Two further well-sized bedrooms feature built-in storage, sharing a contemporary family bathroom.





## The Neighbourhood

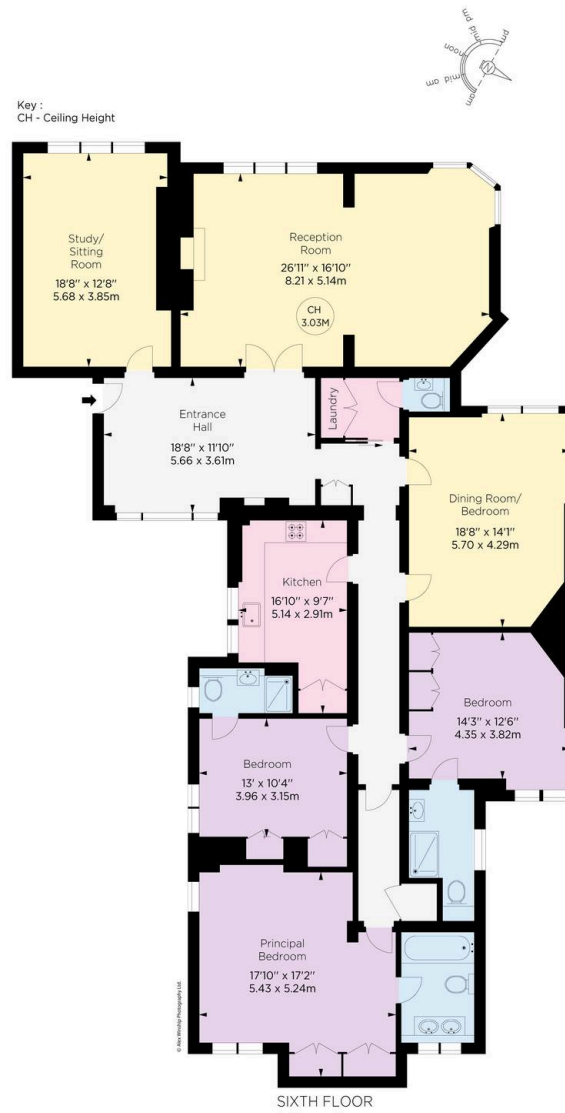
Set within a secure gated development, York House benefits from concierge services and off-street parking. High Street Kensington and Gloucester Road stations are within easy reach, along with Hyde Park and Kensington's many restaurants, boutiques, and cultural landmarks.

# York House, W8

**Approx. gross internal area**  
2476 sq ft / 230.11 sq m

**RUSSELL  
SIMPSON**

This plan is for layout guidance only.  
Not drawn to scale unless stated. Windows  
and door openings are approximate. Whilst  
every care is taken in the preparation of this  
plan, please check all dimensions, shapes,  
and compass bearings before making any  
decisions reliant upon them.



**ALEX  
WINSHIP**  
Photography

\*Examples for guidance only, not to scale or reduction  
specimens. It must not be relied upon as a statement of  
fact. All measurements and plans are approximate and  
may vary slightly from the actual measurements made on-site  
subject to the RICS Code of Measuring Practice.

**M  
RICS** Certified  
Property  
Measurer

**RUSSELL  
SIMPSON**

---

## Contact Us

+44 (0) 20 3761 9691

13 Kensington Square  
London  
W8 5HD

[kensington@russellsimpson.co.uk](mailto:kensington@russellsimpson.co.uk)