



RUSSELL SIMPSON

Beautifully refurbished two-bedroom
flat in Chelsea

HIGHFIELD HOUSE
CHELSEA SW3

Highfield House

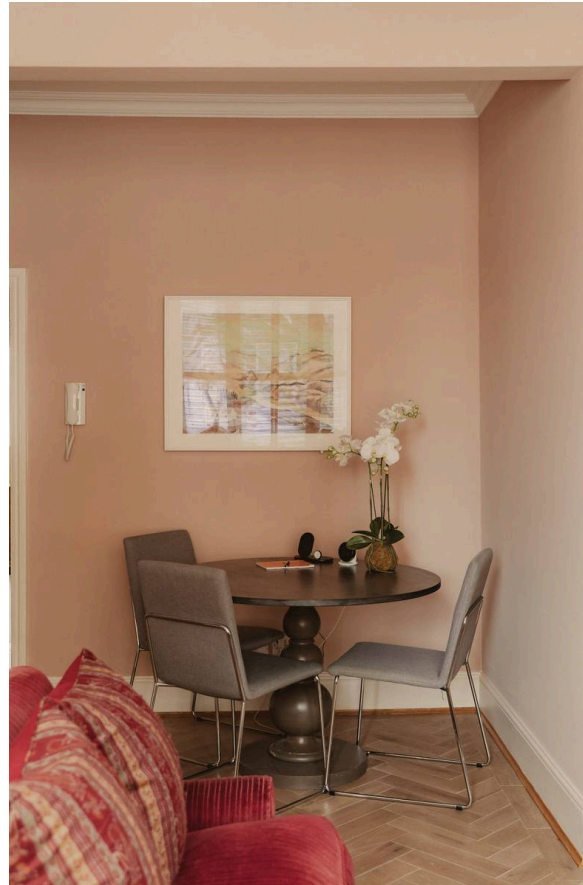
Let

| | | | |
|----------------|-----------------------------------------------------------------------|------------------|-----------------------------------|
| BEDROOMS 2 | INTERNAL 813 <small>SQ FT</small> 75 <small>SQM</small> | OUTDOOR — | FURNISHED STATUS Furnished |
| BATHROOMS 2 | | EPC D | COUNCIL TAX RBKC, G |

The Property

A wonderful two-bedroom, two-bathroom flat which has undergone extensive refurbishment throughout.

Throughout the flat, the refurbishment has been carried out to a high standard, with neutral colour schemes creating a calm and sophisticated atmosphere. The property benefits from excellent natural light and well-considered proportions in all rooms.

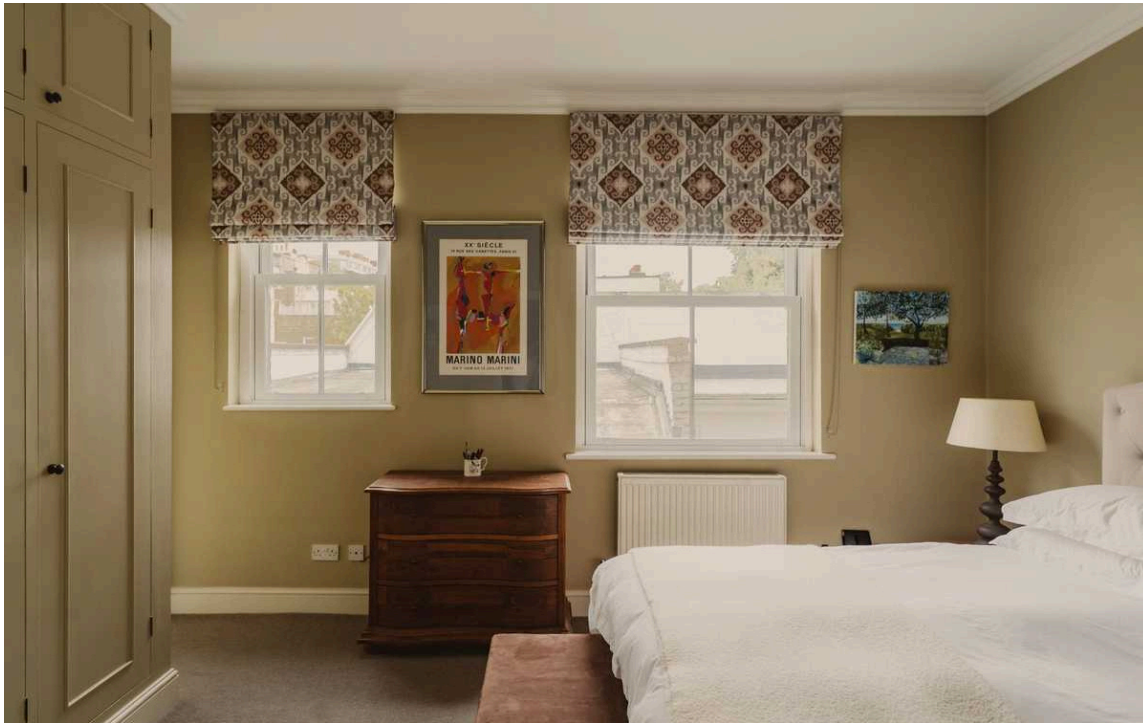


Indoor Spaces



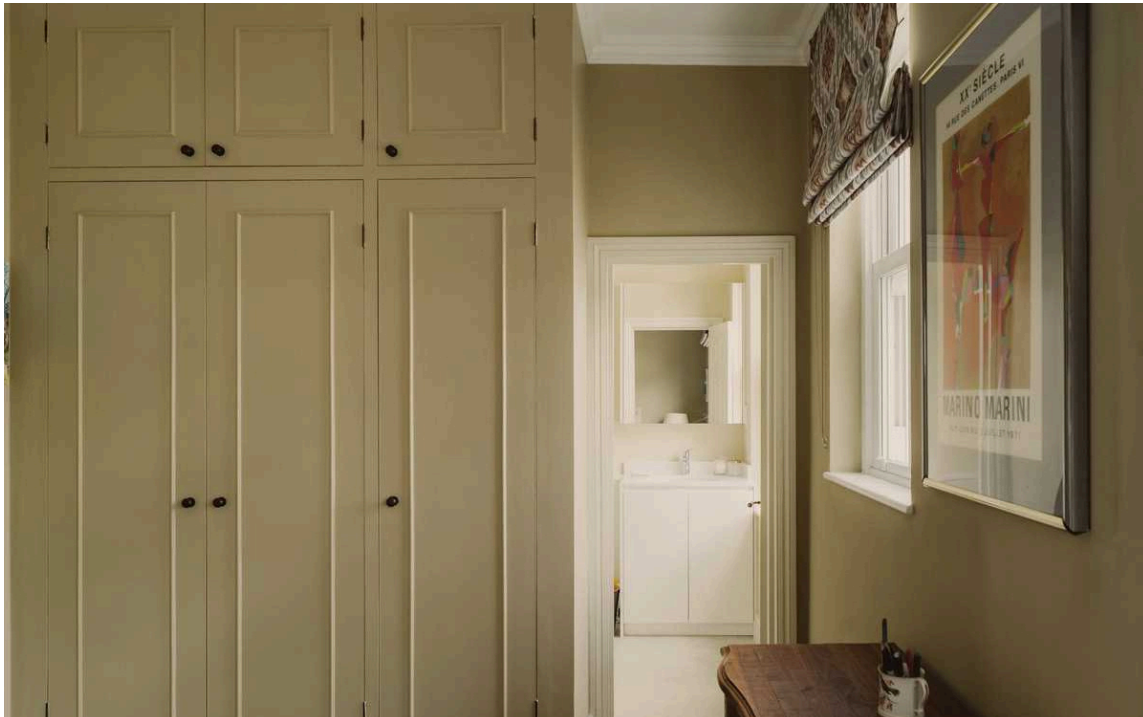
Stepping into this first-floor flat, you are greeted by a generous reception room filled with light from large bay windows with white shutters. The room features a charming white fireplace as its focal point, complemented by elegant chevron-patterned hardwood flooring throughout.

The space flows seamlessly into a well-appointed galley kitchen, fitted with modern appliances including an integrated oven and, electric hob. A small dining area with a window overlooks the street below.



The Bedrooms

The principal bedroom is well-proportioned with fitted wardrobes providing excellent storage, and benefits from an ensuite bathroom. The second bedroom offers comfortable accommodation with built-in storage and enjoys pleasant street views through its well-positioned window. A separate family bathroom completes the accommodation.





The Neighbourhood

Woodfall Street is a quiet residential address in the heart of Chelsea, moments away from the King's Road with its renowned boutiques, restaurants and cafés. The location offers excellent transport links with Sloane Square underground station within easy walking distance, providing direct access to Victoria and the West End.

The area is well-served by local amenities including the charming shops and eateries along the King's Road, while the green spaces of Burton Court and Ranelagh Gardens are nearby. This picturesque Chelsea location combines village-like charm with the convenience of central London living.

Highfield House,
Woodfall Street, SW₃

**RUSSELL
SIMPSON**

Approximate Internal Area
813 sq ft/ 76 sq m

This plan is for layout guidance only. Not drawn to scale unless stated. Windows and door openings are approximate. Whilst every care is taken in the preparation of this plan, please check all dimensions, shapes, and compass bearings before making any decisions reliant upon them.



**RUSSELL
SIMPSON**

Contact Us

+44 (0) 20 7225 0277

151A Sydney Street
London
SW3 6NT

chelsea@russellsimpson.co.uk

In accordance with the Property Mis-Description Act 1991, the following details have been prepared in good faith, and are not intended to constitute part of an offer or contract. Any information contained herein (whether in the text, plans or photographs) is given in good faith but should not be relied upon as being a statement of representation of fact. Nothing in these Particulars shall be deemed to be a statement that the property is in good condition or otherwise nor that any services or facilities are in good working order. Any measurements of distances referred to herein are approximate only. October 2021