



## **RUSSELL SIMPSON**

A refined two-bedroom apartment  
on the third floor of a distinguished  
Knightsbridge address, moments  
from Sloane Street

WILLIAM STREET HOUSE  
KNIGHTSBRIDGE SW1X

# William Street House

£1,500 P/W

BEDROOMS 2	INTERNAL 1,207 <small>SQ FT</small>	OUTDOOR 74 <small>SQ FT</small>	FURNISHED STATUS Unfurnished
BATHROOMS 3	112 <small>SQM</small>	EPC D	COUNCIL TAX Westminster City, H



## The Property

A well-proportioned two-bedroom apartment set on the third floor, accessed by lift.

Entering the flat, a welcoming entrance hall provides a sense of arrival and leads through to the principal rooms. The generously sized reception room is a bright and elegant space, centred around an ornate fireplace with a classic white mantel. Wooden floors run underfoot, and recessed ceiling lights complement the natural light that fills the room through a curtained window.



## Indoor Spaces

The kitchen and dining room is a contemporary, well-appointed space with light-coloured fitted cabinetry, an integrated sink and built-in ovens. Wooden floors continue throughout, and a window draws in natural light, creating an open and airy atmosphere.





## The Bedrooms

Bedroom one is a substantial principal room with built-in cabinetry and a large window. Its en-suite shower room is finished in large marble-effect tiles, featuring a vessel sink set on a dark vanity unit with a chrome faucet, and a large shower.

Bedroom two is a well-proportioned second room, equally well served by natural light, and benefits from its own en-suite bathroom, finished to the same sophisticated standard. A cloakroom serves the entrance hall and principal living areas.



# Outdoor Spaces

The flat includes a terrace with wooden decking and black metal railings, offering rooftop views across the surrounding Knightsbridge cityscape. An outside storage area is also accessible.

# The Neighbourhood

William Street is a quiet residential address in the heart of Knightsbridge, one of London's most upmarket neighbourhoods. Sloane Street, with its celebrated boutiques and restaurants, is moments away, as is Knightsbridge station on the Piccadilly line. The open spaces of Hyde Park are within easy reach, alongside the cultural and retail offerings of Harrods and the wider Brompton Road. Chelsea and Belgravia are both a short walk away, adding further to the exceptional range of amenities on the doorstep.

William Street House,  
William, Street, SW1

**RUSSELL  
SIMPSON**

**Approximate Internal Area**

1,207 sq ft / 112 sq m

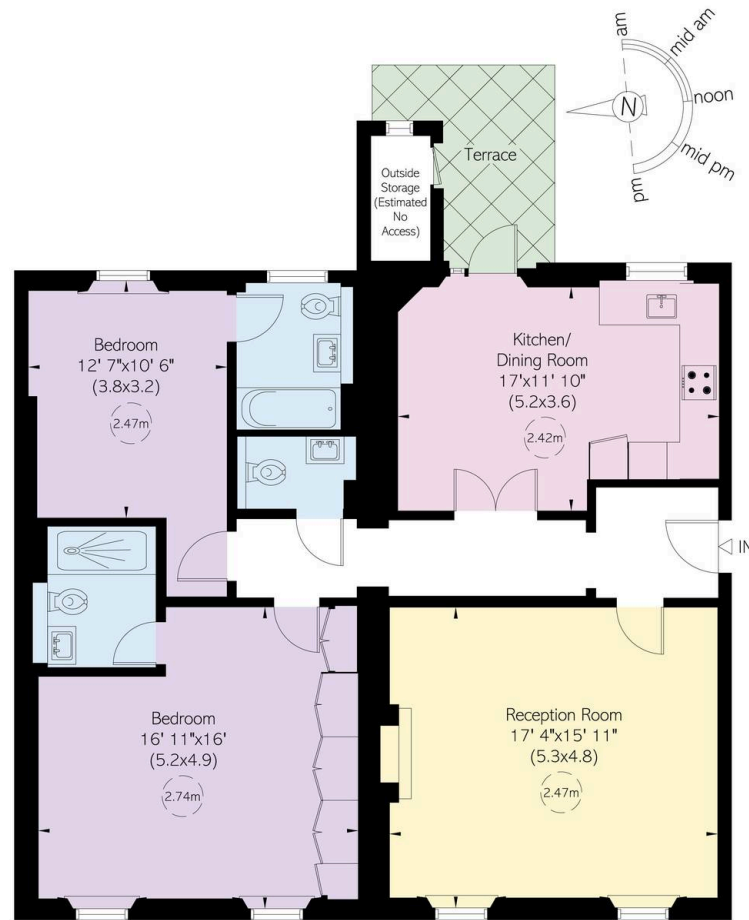
**Including estimated  
outside storage**

21 sq ft / 2 sq m

**Outside Area**

74 sq ft / 7 sq m

This plan is for layout guidance only. Not drawn to scale unless stated. Windows and door openings are approximate. Whilst every care is taken in the preparation of this plan, please check all dimensions, shapes, and compass bearings before making any decisions reliant upon them.



Third Floor

**RUSSELL  
SIMPSON**

---

## Contact Us

+44 (0) 20 7225 0277

151A Sydney Street  
London  
SW3 6NT

[chelsea@russellsimpson.co.uk](mailto:chelsea@russellsimpson.co.uk)