



## **RUSSELL SIMPSON**

A large three bedroom flat in a  
prime location

WILLIAM STREET HOUSE  
KNIGHTSBRIDGE SW1X

# William Street House

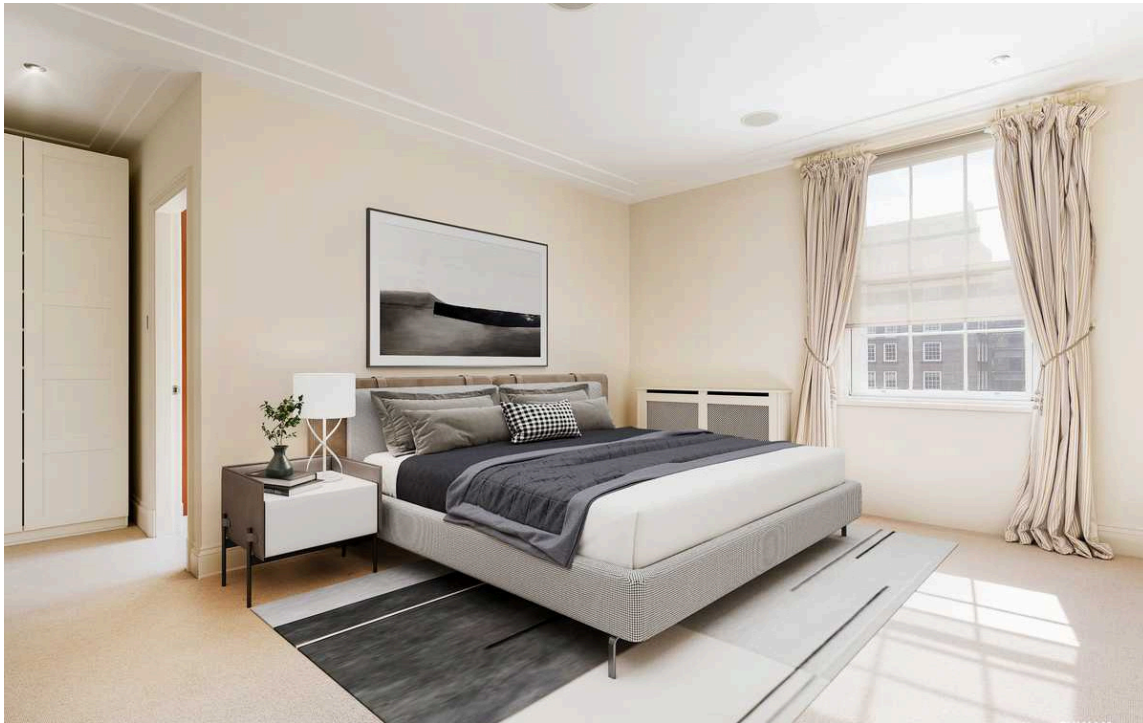
Let

<div>BEDROOMS</div> <div>3—3</div>	<div>INTERNAL</div> <div>2,137 <small>SQ FT</small></div> <div>198 <small>SQM</small></div>	<div>OUTDOOR</div> <div>—</div>	<div>FURNISHED STATUS</div> <div>Multiple Options</div>
<div>BATHROOMS</div> <div>3—3</div>		<div>EPC</div> <div>C</div>	<div>COUNCIL TAX</div> <div>Westminster City, H</div>



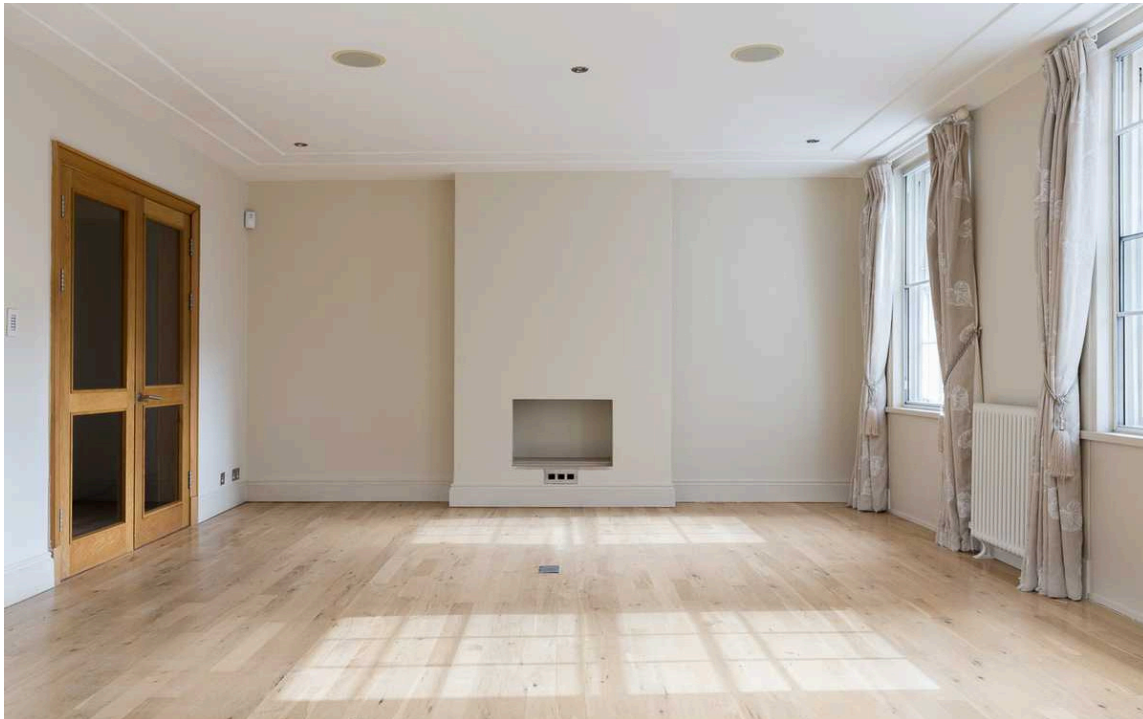
## The Property

A bright and well presented presented second floor flat (with lift) in this well looked after block in Knightsbridge.



## Indoor Spaces

The flat offers wooden flooring in the reception room and dining room, along with three well sized bedrooms and three modern bathrooms.

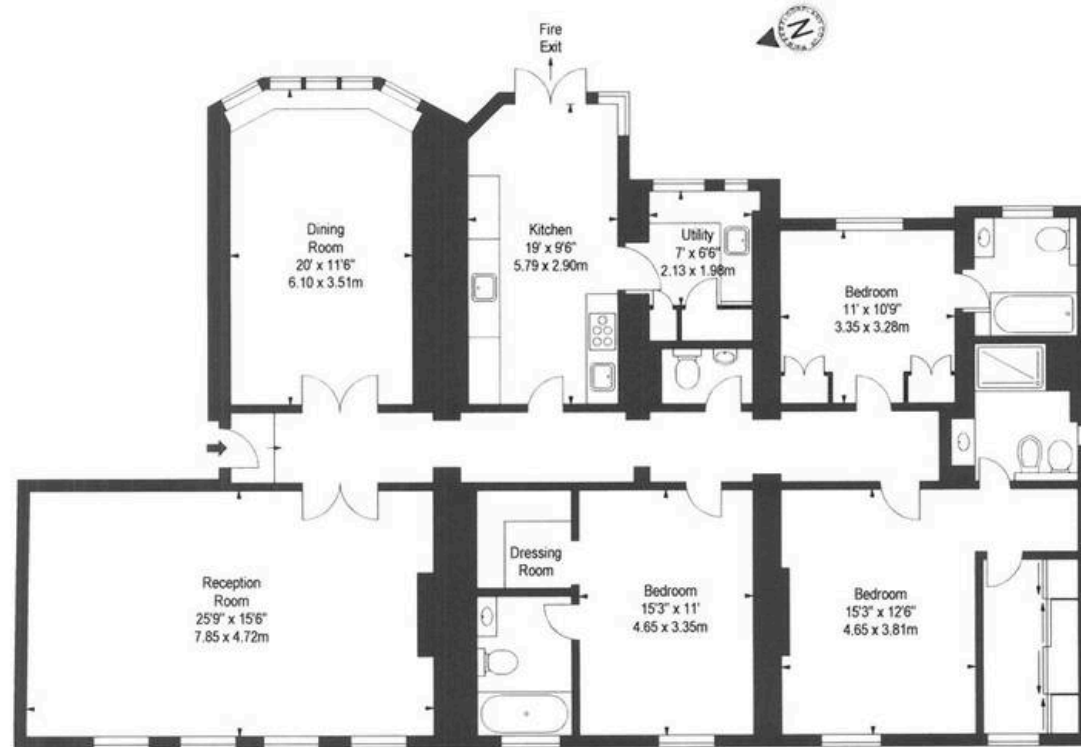


# The Neighbourhood

William Street is ideally located a stones throw from Knightsbridge and all it has to offer. Available from mid-October on an unfurnished basis.

**FLAT 7,  
WILLIAM STREET HOUSE,  
WILLIAM STREET, SW1**  
Approx. Gross Internal Area \*  
2137 Ft<sup>2</sup> - 198.53 M<sup>2</sup>

Illustration For Identification Purposes Only. Not to Scale  
\* As Defined by RICS - Code of Measuring Practice



SECOND FLOOR

BKR

FLOORPLANS

www.bkrfloorplans.co.uk  
T: 0845 367 2023  
2009

**RUSSELL  
SIMPSON**

---

## Contact Us

+44 (0) 20 7225 0277

151A Sydney Street  
London  
SW3 6NT

[chelsea@russellsimpson.co.uk](mailto:chelsea@russellsimpson.co.uk)

In accordance with the Property Mis-Description Act 1991, the following details have been prepared in good faith, and are not intended to constitute part of an offer or contract. Any information contained herein (whether in the text, plans or photographs) is given in good faith but should not be relied upon as being a statement of representation of fact. Nothing in these Particulars shall be deemed to be a statement that the property is in good condition or otherwise nor that any services or facilities are in good working order. Any measurements of distances referred to herein are approximate only. October 2021