



RUSSELL SIMPSON

Charming three-bedroom flat in
prestigious Knightsbridge location

WASHINGTON HOUSE
KNIGHTSBRIDGE SW3

Washington House

£15,000 P/M

<div>BEDROOMS</div> <div>3</div>	<div>INTERNAL</div> <div>1,758 <small>SQ FT</small></div> <div>163 <small>SQM</small></div>	<div>OUTDOOR</div> <div>43 <small>SQ FT</small></div>	<div>FURNISHED STATUS</div> <div>Furnished</div>
<div>BATHROOMS</div> <div>3</div>		<div>EPC</div> <div>B</div>	<div>COUNCIL TAX</div> <div>RBKC, H</div>



The Property

A delightful three-bedroom flat presented in superb condition within Washington House



The Reception Rooms

Stepping into this well-proportioned flat, you are greeted by a generous dining room filled with natural light and featuring access to a private balcony. The space flows beautifully into a separate reception room, creating an ideal layout for both relaxation and formal entertaining.

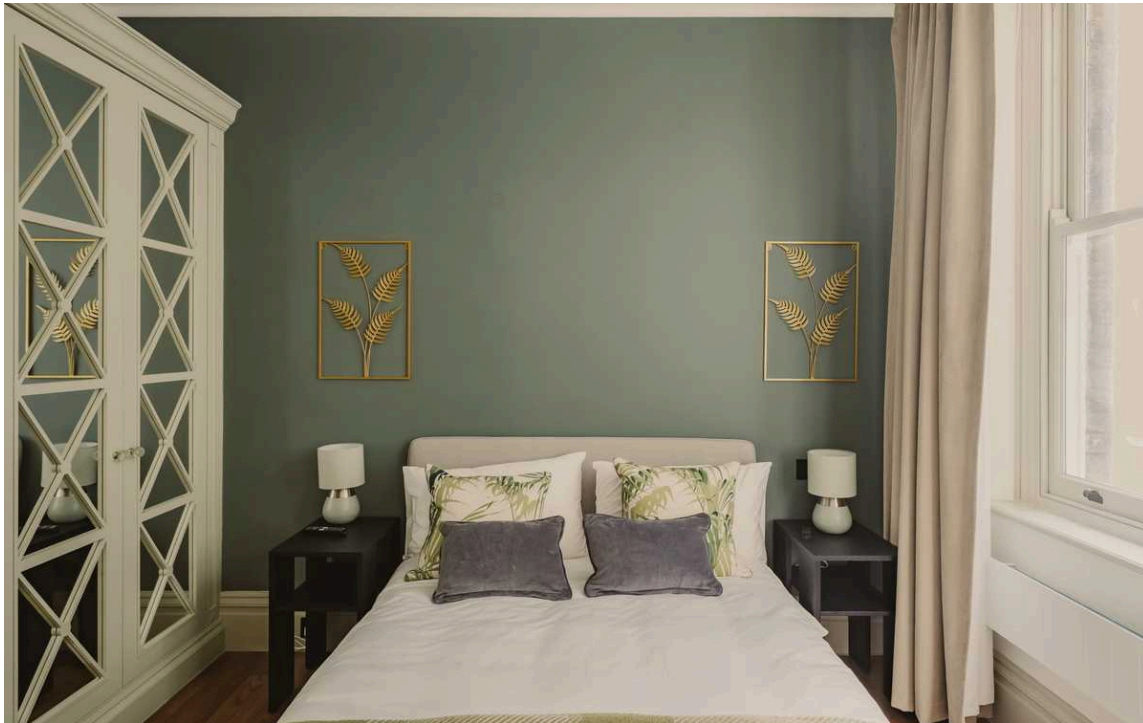




The Kitchen

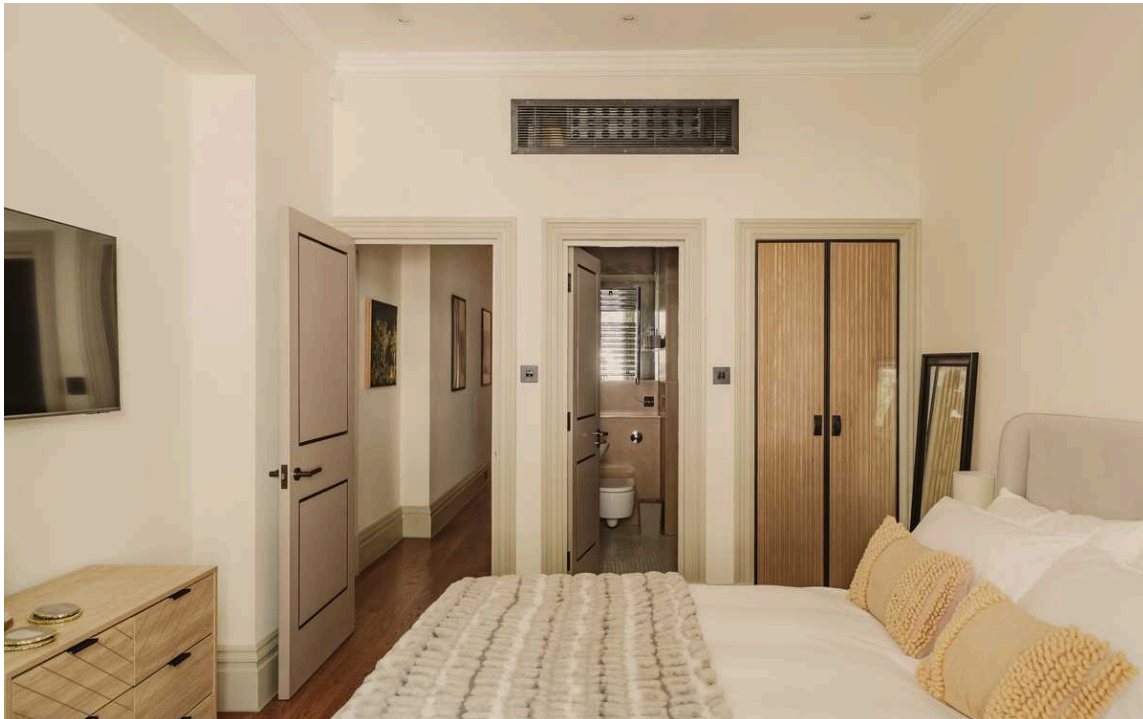
The kitchen is thoughtfully designed with fitted units and offers ample preparation space, while maintaining a bright and airy feel throughout. A small balcony with outside storage is accessible from the kitchen.





The Bedrooms

Further along the corridor is a guest WC and three well-appointed bedrooms, each offering comfortable proportions, good natural light, and en-suite bathrooms.



The Design

The flat is completed by well-designed bathroom facilities and includes practical storage solutions throughout. The property benefits from excellent ceiling heights and maintains a refined character with considered design features that enhance the overall living experience.



The Neighbourhood

Basil Street is a prestigious address in the heart of Knightsbridge, moments away from the world-renowned shopping of Harrods and Harvey Nichols. The tree-lined street offers a refined residential setting while being perfectly positioned for the excellent transport links of Knightsbridge Underground station. The area provides easy access to Hyde Park's green spaces, along with the finest restaurants, galleries, and cultural attractions that this distinguished part of London has to offer.

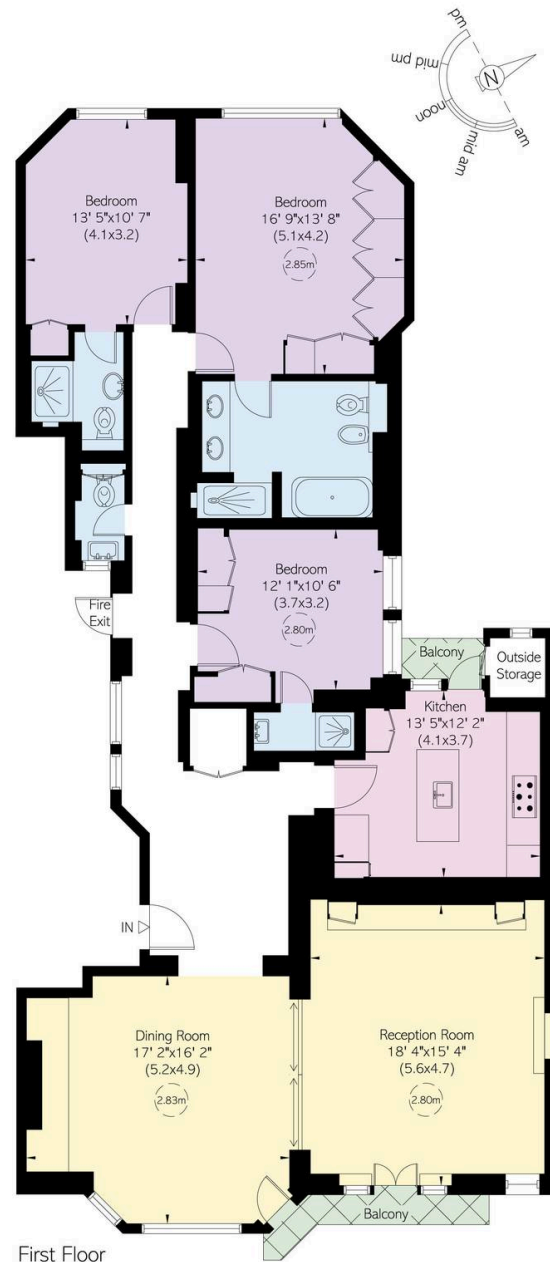
Washington House, Basil Street, SW₃

Approximate Internal Area
1,758 sq ft/ 163 sq m

Including storage
15 sq ft/ 1 sq m
Outside Area
44 sq ft/ 4 sq m

**RUSSELL
SIMPSON**

This plan is for layout guidance only.
Not drawn to scale unless stated. Windows
and door openings are approximate. Whilst
every care is taken in the preparation of this
plan, please check all dimensions, shapes,
and compass bearings before making any
decisions reliant upon them.



**RUSSELL
SIMPSON**

Contact Us

+44 (0) 20 7225 0277

151A Sydney Street
London
SW3 6NT

chelsea@russellsimpson.co.uk

In accordance with the Property Mis-Description Act 1991, the following details have been prepared in good faith, and are not intended to constitute part of an offer or contract. Any information contained herein (whether in the text, plans or photographs) is given in good faith but should not be relied upon as being a statement of representation of fact. Nothing in these Particulars shall be deemed to be a statement that the property is in good condition or otherwise nor that any services or facilities are in good working order. Any measurements of distances referred to herein are approximate only. October 2021