

RUSSELL SIMPSON

Spacious loft-like two-bedroom flat
with sublime views in modern
development near the Houses of
Parliament

VICTORIA STREET
WESTMINSTER SW1H

Victoria Street

£1,995 P/W

BEDROOMS 2	INTERNAL 1,618 <small>SQ FT</small>	OUTDOOR —	FURNISHED STATUS Furnished
BATHROOMS 2	150 <small>SQM</small>	EPC B	COUNCIL TAX G

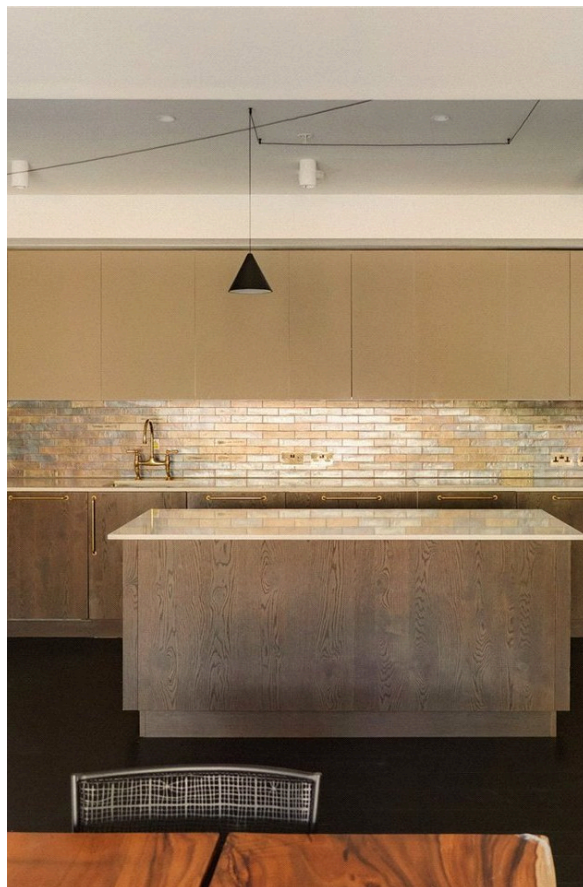


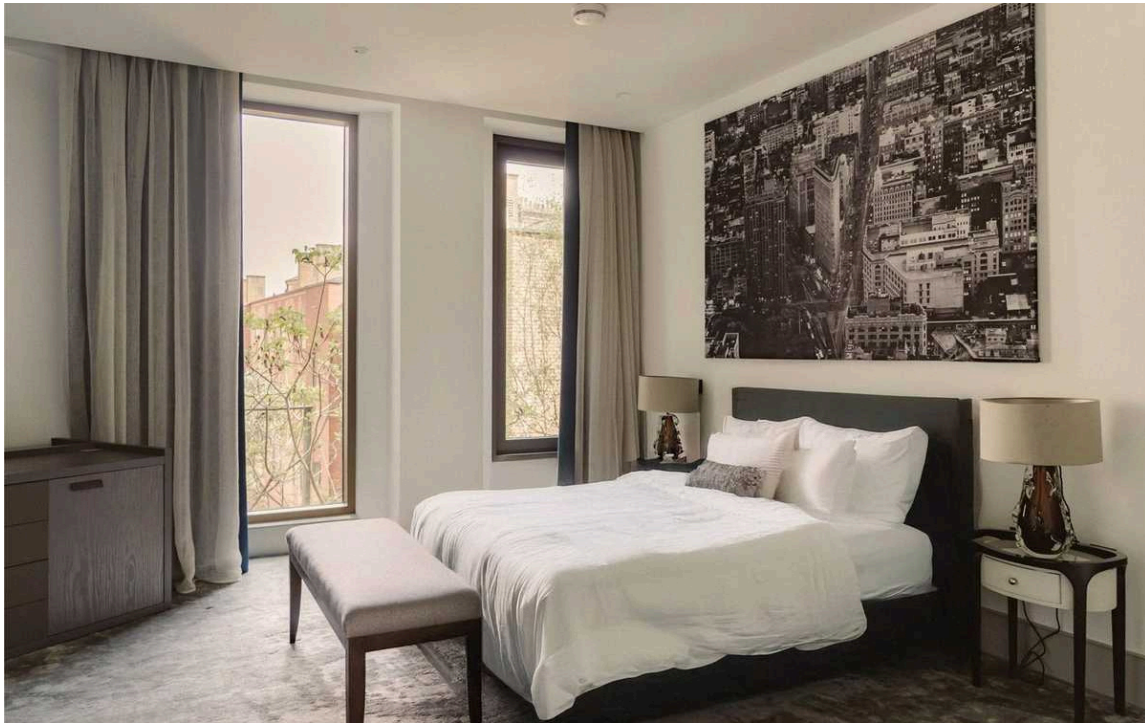
The Property

Stylish flat in a popular new apartment building offering gym and rooftop garden with sublime views

Indoor Spaces

Stepping into the flat on the first floor, the hallway leads through to a wide reception room. This includes an open-plan kitchen, space for separate dining and seating areas, and a wide full-length window at the far end.





The Bedrooms

The flat also contains a pair of bedrooms. The principal bedroom has an ensuite bathroom with a bath and considerable wardrobe space. The second bedroom has a generous bathroom next door. A guest WC, a utility room and further storage space completes this flat.

The property is decorated in a stylish contemporary fashion, with comfort cooling and underfloor heating which adds to the tranquility and convenience.





The Neighbourhood

This award-winning new apartment building gives residents access to a gym and an eighth-floor rooftop garden with superb views towards the Houses of Parliament and the City of London. It also offers a 24-hour concierge service.

The apartment block lies midway along Victoria Street, a newly developed centre for residential and office space in central London. St James's Park station is close, while the open spaces of St James's are also nearby. From here, impressive buildings such as Westminster Cathedral, Westminster Abbey and the Palace of Westminster are all within walking distance.

Victoria Street,
SW1H

Approximate area
1618 sq ft / 150.3 sq m

Including limited use area
(11 sq ft / 1.0 sq m)

**RUSSELL
SIMPSON**

This plan is for layout guidance only.
Not drawn to scale unless stated. Windows
and door openings are approximate. Whilst
every care is taken in the preparation of this
plan, please check all dimensions, shapes,
and compass bearings before making any
decisions reliant upon them.



First Floor

**RUSSELL
SIMPSON**

Contact Us

+44 (0) 20 3761 9691

mayfair@russellsimpson.co.uk

In accordance with the Property Mis-Description Act 1991, the following details have been prepared in good faith, and are not intended to constitute part of an offer or contract. Any information contained herein (whether in the text, plans or photographs) is given in good faith but should not be relied upon as being a statement of representation of fact. Nothing in these Particulars shall be deemed to be a statement that the property is in good condition or otherwise nor that any services or facilities are in good working order. Any measurements of distances referred to herein are approximate only. October 2021