



RUSSELL SIMPSON

Sophisticated two-bedroom
apartment in prestigious Chelsea
Harbour development

THE QUADRANGLE
WEST CHELSEA SW10

The Quadrangle

£1,269 P/W

BEDROOMS 2	INTERNAL 952 <small>SQ FT</small>	OUTDOOR 51 <small>SQ FT</small>	FURNISHED STATUS Furnished
BATHROOMS 2	88 <small>SQM</small>	EPC C	COUNCIL TAX LBHF, G



The Property

A beautifully presented two-bedroom apartment with lift access and porter service.

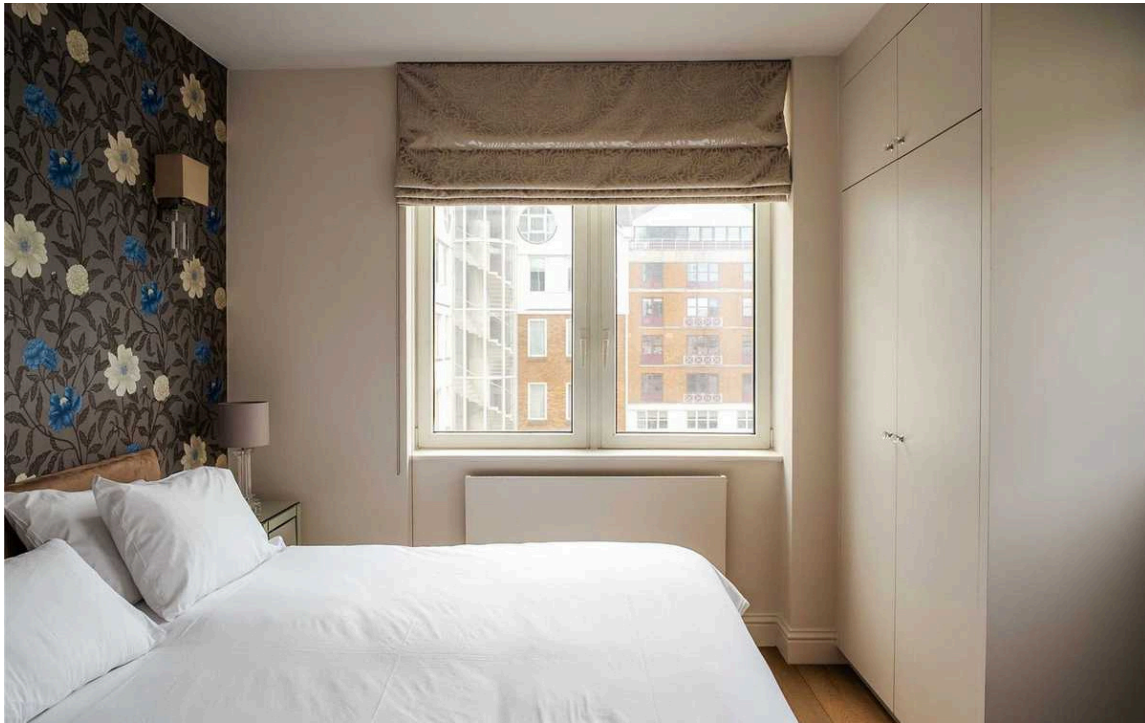


Entertaining Spaces

Entering the flat on the fourth floor, you step into a welcoming entrance hall that flows through to the principal reception room. This generous space features floor-to-ceiling windows that fill the room with natural light and open directly onto the private terrace, creating seamless indoor-outdoor living. The room is well-proportioned with wooden floors and offers views across the development.

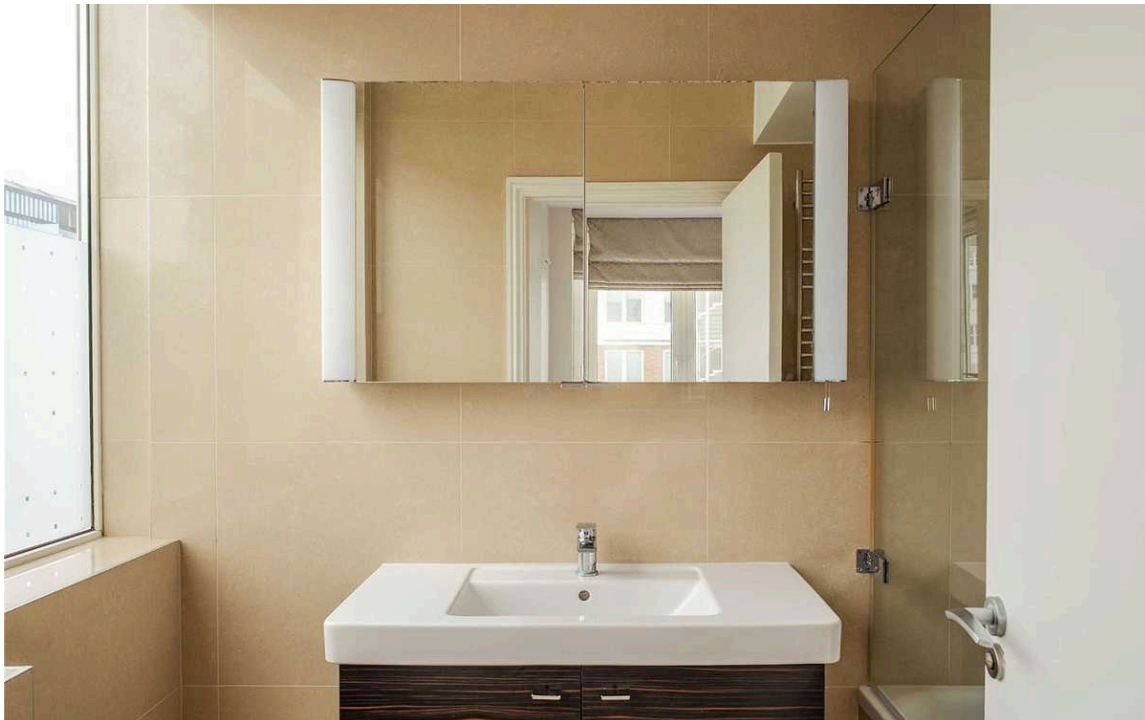
The contemporary kitchen is thoughtfully designed with fitted units, integrated appliances including gas cooking, and ample workspace. A large window provides natural light while overlooking the courtyard below. The kitchen flows efficiently from the reception area, maintaining the apartment's open feel.





The Bedrooms

The master bedroom is substantial in size with built-in storage and an ensuite bathroom featuring modern fixtures, beige tiling, and a glass-enclosed shower. The second bedroom is equally well-proportioned with wooden floors and benefits from excellent natural light through its large window. A separate family shower room serves the apartment, finished to a high standard with contemporary fittings and quality tiling throughout.





The Neighbourhood

The property includes a west-facing balcony accessed from the reception room, providing space for outdoor seating and enjoying the afternoon sun with views across the internal courtyard.

The Quadrangle is situated in the heart of Chelsea Harbour, one of London's most prestigious waterside developments. This quiet residential address offers 24-hour concierge service and beautifully maintained communal areas. The development is moments away from the boutiques and restaurants of the King's Road, while the open spaces of Battersea Park are within easy reach. Imperial Wharf station provides excellent transport links into central London, making this an ideal location for those seeking sophisticated riverside living with convenient access to the capital's finest amenities. In addition, occupants have the option of the River Boat, offering a scenic journey to hotspots such as Battersea Power Station and the Tate Modern or as another option to commute into the City.

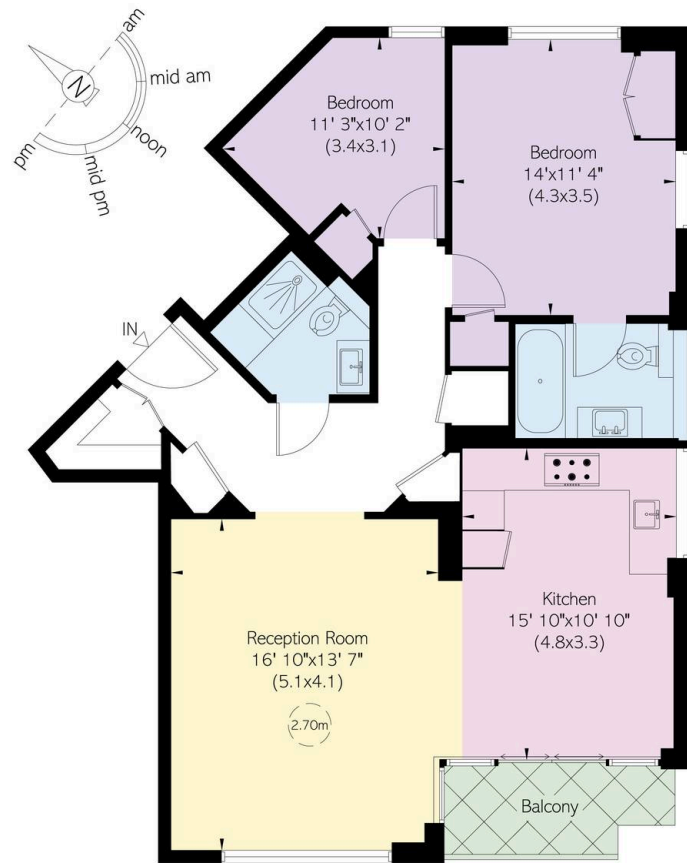
The Quadrangle,
Chelsea Harbour, SW10

**RUSSELL
SIMPSON**

Approximate Internal Area
952 sq ft/ 88 sq m

Outside Area
51 sq ft/ 5 sq m

This plan is for layout guidance only. Not drawn to scale unless stated. Windows and door openings are approximate. Whilst every care is taken in the preparation of this plan, please check all dimensions, shapes, and compass bearings before making any decisions reliant upon them.



Fourth Floor

**RUSSELL
SIMPSON**

Contact Us

+44 (0) 20 7225 0277

151A Sydney Street
London
SW3 6NT

chelsea@russellsimpson.co.uk