



RUSSELL SIMPSON

Two bedroom furnished apartment
available for long let

ST LUKES ROAD
NOTTING HILL W11

St Lukes Road

£750 P/W

<div>BEDROOMS</div> <div>2</div>	<div>INTERNAL</div> <div>641 <small>SQ FT</small></div> <div>59 <small>SQM</small></div>	<div>OUTDOOR</div> <div>31 <small>SQ FT</small></div>	<div>FURNISHED STATUS</div> <div>Furnished</div>
<div>BATHROOMS</div> <div>1</div>		<div>EPC</div> <div>D</div>	<div>COUNCIL TAX</div> <div>E</div>

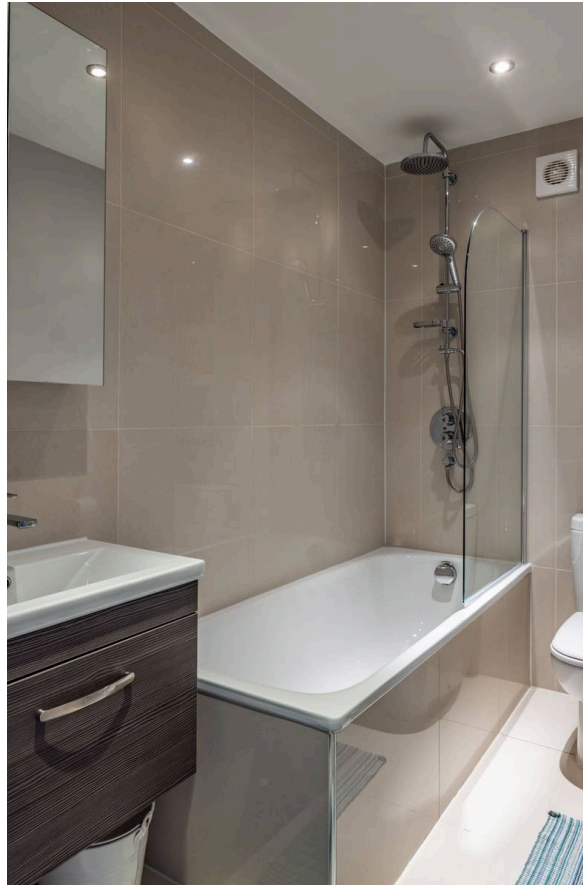


The Property

A charming first floor flat in the heart of Notting Hill Gate which is available to rent on a long term let. Comprising of two large bedrooms, a wonderful south facing reception room and fully equipped kitchen.



The Bedrooms





The Neighbourhood

St Lukes Road is located just off Westbourne Park Road and is a short walk to the famous Portobello Road.

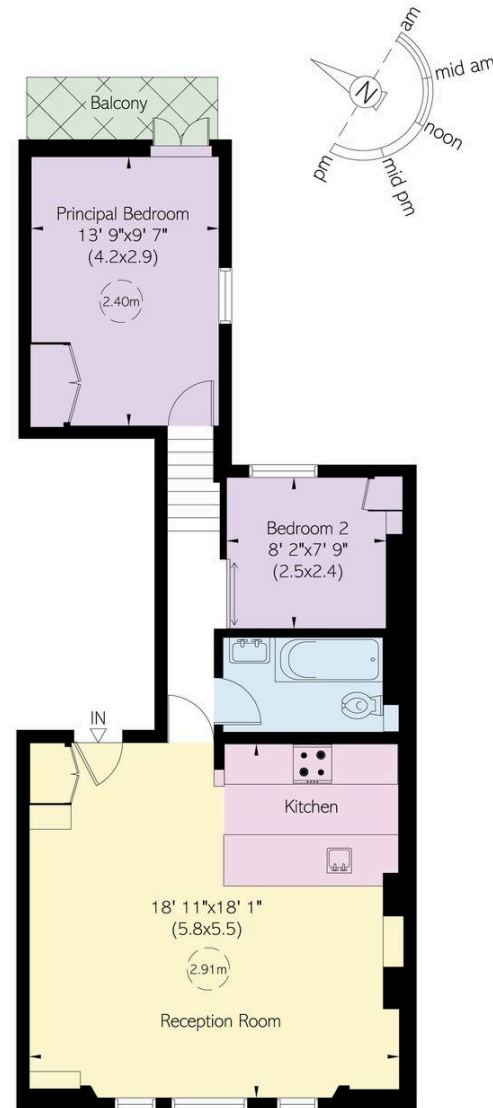
Saint Lukes Road, W11

Approximate Internal Area
641 sq ft/ 60 sq m

Outside Area
31 sq ft/ 3 sq m

**RUSSELL
SIMPSON**

This plan is for layout guidance only.
Not drawn to scale unless stated. Windows
and door openings are approximate. Whilst
every care is taken in the preparation of this
plan, please check all dimensions, shapes,
and compass bearings before making any
decisions reliant upon them.



First Floor

**RUSSELL
SIMPSON**

Contact Us

+44 (0) 20 3761 9691

13 Kensington Square
London
W8 5HD

kensington@russellsimpson.co.uk