

## **RUSSELL SIMPSON**

Sublime and spacious four-bedroom  
Arts & Crafts house with elegant  
interiors to rent

SPRIMONT PLACE  
CHELSEA SW3

Sprimont Place

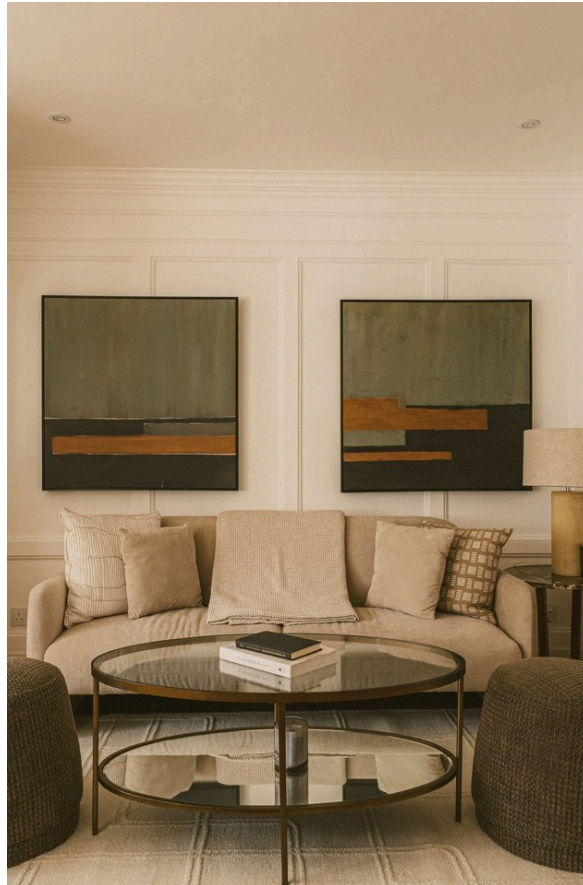
£3,000 <sub>P/W</sub>

BEDROOMS 4	INTERNAL  1,253 <sub>SQ FT</sub>  116 <sub>SQM</sub>	OUTDOOR  109 <sub>SQ FT</sub>	FURNISHED STATUS  Furnished
BATHROOMS 2		EPC  D	COUNCIL TAX  RBKC, H

# The Property

Delightful red-brick house in a historic setting close to the King's Road and Chelsea Green

Stepping into the house on the ground floor, the front hall opens onto a generous reception room. As well as separate dining and seating areas, a wide south-east facing window fills this space with light. Furthermore, wooden floors, panelled walls and a stove fireplace add to the impression of historic charm.

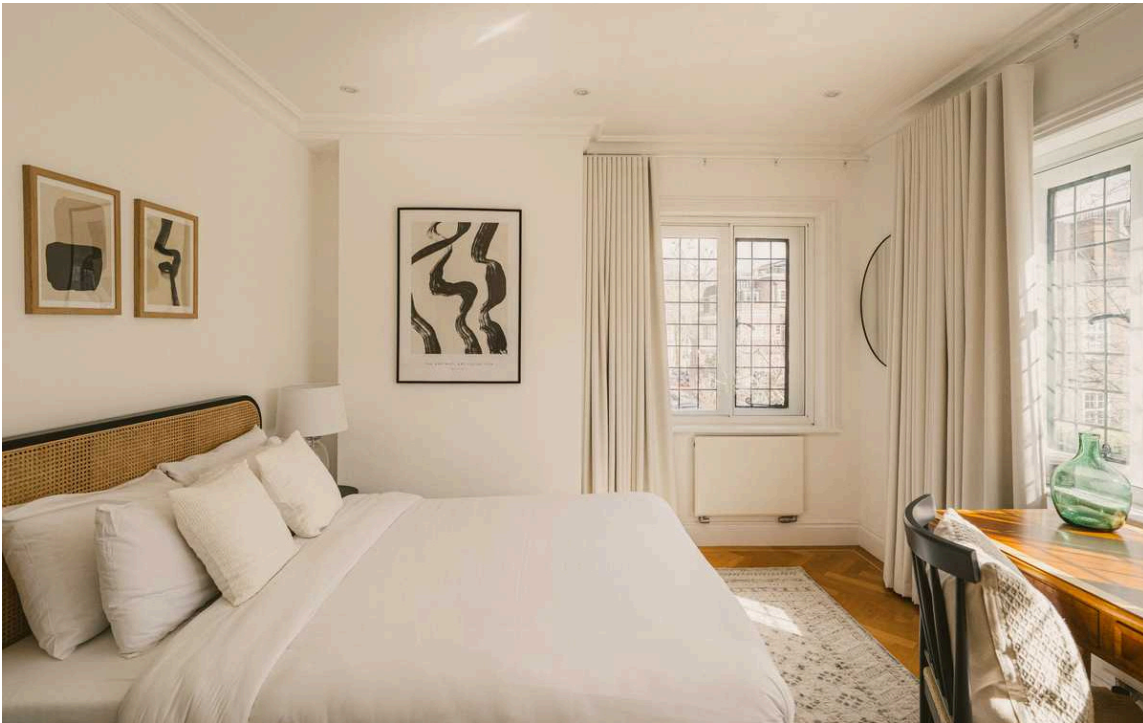




## The Kitchen

The reception room flows into a corridor kitchen with fitted units and a French door opening onto the rear patio. There is also a guest WC on the half-landing.





## The Bedrooms

The first floor features two bedrooms, one with considerable wardrobe space, sharing a bathroom. The second floor contains two more bedrooms, also sharing a bathroom.

## The Design

The interiors of the house have been decorated in an elegant fashion that combines traditional features with contemporary comfort. This results in a charming but stylish property, presented in very good condition.



# The Neighbourhood

The house includes a rear patio garden with enough space for outdoor seating.

The houses of Sprimont Place were built in the 1930s by the architectural firm of Wills & Kaula. Built from red brick in a simplified Tudor revival style, they recall the Arts & Crafts cottages and studios constructed around Chelsea towards the end of the nineteenth century.

The property is close to Chelsea Green, which is one the neighbourhood's gastronomic centres, offering a range of delis, cafes and restaurants. The many shopping options of the King's Road are equally close, while Sloane Square station is also nearby.

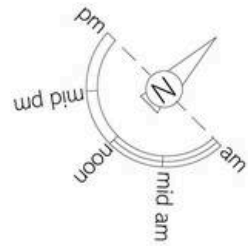


Russell Simpson



Sprimont Place





## Sprimont Place, SW<sub>3</sub>

**RUSSELL  
SIMPSON**

### Approximate Internal Area

1,253 sq ft/ 116 sq m

### Including limited use area

51 sq ft/ 5 sq m

### Outside Area

110 sq ft/ 10 sq m

This plan is for layout guidance only. Not drawn to scale unless stated. Windows and door openings are approximate. Whilst every care is taken in the preparation of this plan, please check all dimensions, shapes, and compass bearings before making any decisions reliant upon them.





**RUSSELL  
SIMPSON**

---

## Contact Us

+44 (0) 20 7225 0277

151A Sydney Street  
London  
SW3 6NT

[chelsea@russellsimpson.co.uk](mailto:chelsea@russellsimpson.co.uk)

In accordance with the Property Mis-Description Act 1991, the following details have been prepared in good faith, and are not intended to constitute part of an offer or contract. Any information contained herein (whether in the text, plans or photographs) is given in good faith but should not be relied upon as being a statement of representation of fact. Nothing in these Particulars shall be deemed to be a statement that the property is in good condition or otherwise nor that any services or facilities are in good working order. Any measurements of distances referred to herein are approximate only. October 2021