



RUSSELL SIMPSON

Exceptionally spacious six-bedroom
penthouse with spectacular views
opposite Hyde Park

SOUTH LODGE
KNIGHTSBRIDGE SW7

South Lodge

£12,000 P/W

<div>BEDROOMS</div> <div>6</div>	<div>INTERNAL</div> <div>4,798 <small>SQ FT</small></div> <div>445 <small>SQM</small></div>	<div>OUTDOOR</div> <div>916 <small>SQ FT</small></div>	<div>FURNISHED STATUS</div> <div>Unfurnished</div>
<div>BATHROOMS</div> <div>5</div>		<div>EPC</div> <div>C</div>	<div>COUNCIL TAX</div> <div>H</div>

The Property

Large lateral flat with recently refurbished interiors and generous terraces in a sought-after modern apartment building.

This penthouse flat is centred on a generous reception room with south- and west-facing sliding French doors that give access to a terrace and fill the space with light. Furthermore, an ornate ceiling, marble floor and classical pilaster add the overall sense of elegance.



Indoor Spaces

The reception room flows through to a generous entrance hall, which leads into a dining room with its own terrace access. The hall also opens onto a study with inbuilt shelving. Meanwhile, the kitchen has fitted units, an informal breakfast area, utility room and pantry.





The Bedrooms

The other side of the flat features five bedrooms. The exceptionally well-proportioned principal bedroom has a spacious bathroom, a pair of walk-in wardrobes, and access to its own terrace.

There are two more ensuite bedrooms, and another two bedrooms sharing a bathroom. All of them offer considerable wardrobe space.



The Design

The flat is located on the tenth floor with direct lift access. It also has a guest WC and further storage in the corridor. Finally, there is a staff bedroom with a bathroom next door. It is presented in a very good condition with restrained classical interiors.

Outdoor Spaces

The property includes a large, wrapround terrace on the western side of the flat with enough space for outdoor seating. There are two more terraces on the property's eastern side, and an additional balcony. The spectacular views include both Hyde Park and the rooftops of Knightsbridge.

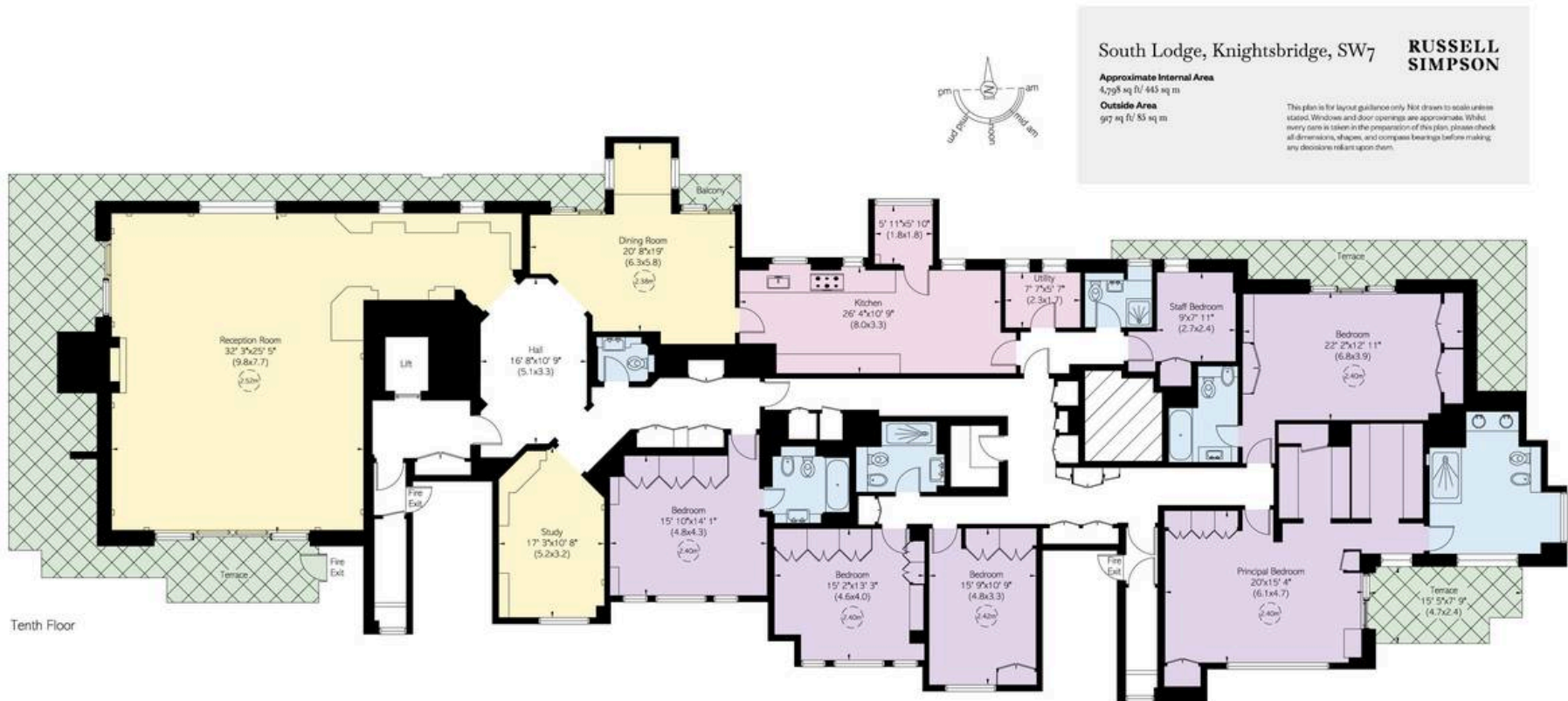




The Neighbourhood

South Lodge is a prestigious and popular apartment building in Knightsbridge. It includes a 24-hour concierge, lifts and secure underground parking (of which two spaces are allocated to this property).

From here, the excellent restaurants and shops of Knightsbridge are a short walk away, as well as the underground station. In addition, the open spaces of Hyde Park and Kensington Gardens are within easy reach. Finally, the word-class cultural venues of South Kensington are close.



**RUSSELL
SIMPSON**

Contact Us

+44 (0) 20 7225 0277

151A Sydney Street
London
SW3 6NT

chelsea@russellsimpson.co.uk

In accordance with the Property Mis-Description Act 1991, the following details have been prepared in good faith, and are not intended to constitute part of an offer or contract. Any information contained herein (whether in the text, plans or photographs) is given in good faith but should not be relied upon as being a statement of representation of fact. Nothing in these Particulars shall be deemed to be a statement that the property is in good condition or otherwise nor that any services or facilities are in good working order. Any measurements of distances referred to herein are approximate only. October 2021