



RUSSELL SIMPSON

Immaculate two bedroom flat in this
convenient location

ROLAND GARDENS
SOUTH KENSINGTON SW7

Roland Gardens

Let

BEDROOMS 2	INTERNAL 855 SQ FT 79 SQM	OUTDOOR —	FURNISHED STATUS Furnished
BATHROOMS 2		EPC C	COUNCIL TAX RBKC, G

The Property

A perfectly presented apartment with bright views over Roland Gardens.

img 1

Kitchen Details





Indoor Spaces

The property is entered on the second floor. To the right is the open plan kitchen and living room which also encompasses an informal dining area. The principle bedroom is spacious and has an en suite shower room. There is then a second double bedroom and a modern family bathroom. In addition, the flat has a handy utility cupboard.

img 1

Principal Bedroom

img 2

Bathroom





The Neighbourhood

Roland Gardens is an attractive street in South Kensington, lined with late Victorian terrace houses. The Fulham Road and the Old Brompton Road are both close by, with their renowned range of restaurants and shops. In addition, Gloucester Road and South Kensington underground stations are within walking distance.

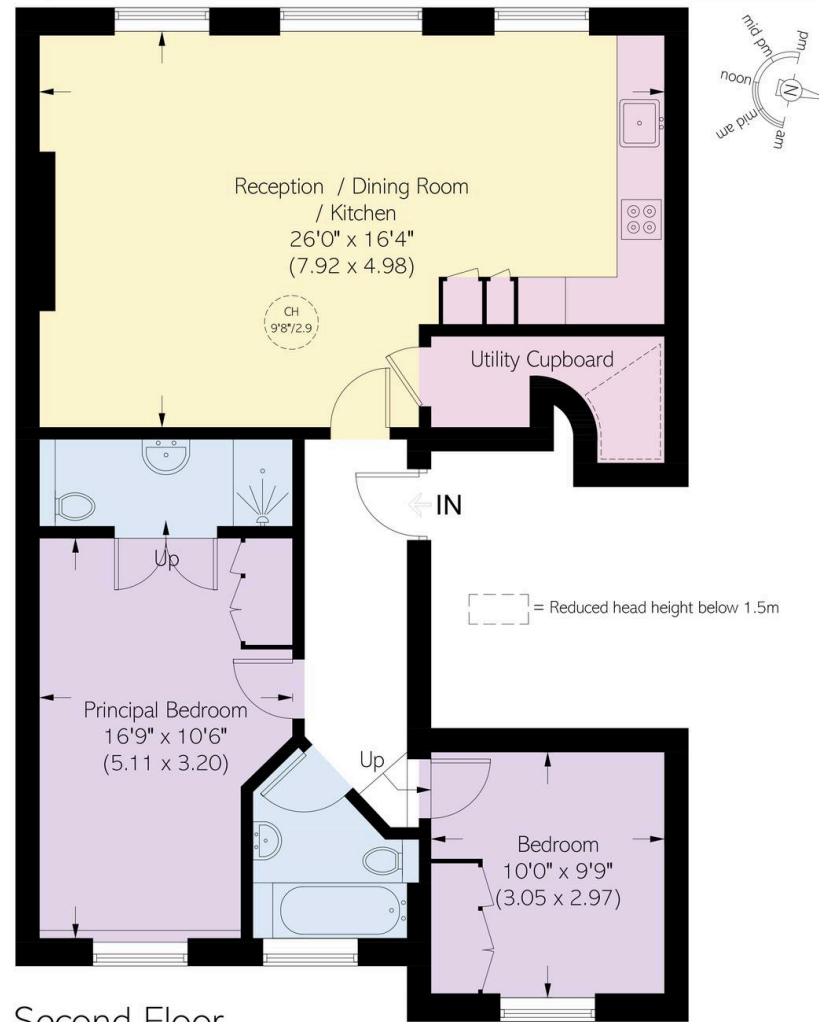
Roland Gardens, SW7

Approximate area
855 sq ft / 79.4 sq m

Including limited use area
(17 sq ft / 1.6 sq m)

**RUSSELL
SIMPSON**

This plan is for layout guidance only. Not drawn to scale unless stated. Windows and door openings are approximate. Whilst every care is taken in the preparation of this plan, please check all dimensions, shapes, and compass bearings before making any decisions reliant upon them.



**RUSSELL
SIMPSON**

Contact Us

+44 (0) 20 7225 0277

151A Sydney Street
London
SW3 6NT

chelsea@russellsimpson.co.uk

In accordance with the Property Mis-Description Act 1991, the following details have been prepared in good faith, and are not intended to constitute part of an offer or contract. Any information contained herein (whether in the text, plans or photographs) is given in good faith but should not be relied upon as being a statement of representation of fact. Nothing in these Particulars shall be deemed to be a statement that the property is in good condition or otherwise nor that any services or facilities are in good working order. Any measurements of distances referred to herein are approximate only. October 2021