



RUSSELL SIMPSON

Charming two-bedroom apartment
in an historic cobbled mews

RICHMOND MEWS
SOHO W1D

Richmond Mews

£3,000 _{P/W}

BEDROOMS 2	INTERNAL 889 _{SQ FT} 82 _{SQM}	OUTDOOR —	FURNISHED STATUS Furnished
BATHROOMS 2		EPC B	COUNCIL TAX F

The Property

A colourful apartment presented in superb condition within a charming historic mews setting.

Stepping into the flat, you are greeted by a generous reception room filled with light from large windows overlooking the cobbled mews. The space features elegant patchwork sofas in rich jewel tones and a contemporary fireplace, creating a sophisticated yet welcoming atmosphere.

The room flows seamlessly into the kitchen and dining area, which has been designed in contemporary fashion with light-coloured fitted units and marble countertops. The kitchen includes integrated appliances and opens to a bright dining space with comfortable seating.





The Bedrooms

The apartment features two well-proportioned bedrooms, both decorated in graceful style. The principal bedroom showcases beautiful floral patterns and textured blue wallpaper, with a large window providing excellent natural light and benefits from an en-suite bathroom finished in luxurious white marble with grey veining. Built-in storage maximises the space efficiently. The second bedroom continues the refined aesthetic with nature-inspired fabrics and elegant striped wallpaper, creating a serene retreat. A shared bathroom with marble finishes and contemporary fixtures serves the apartment.

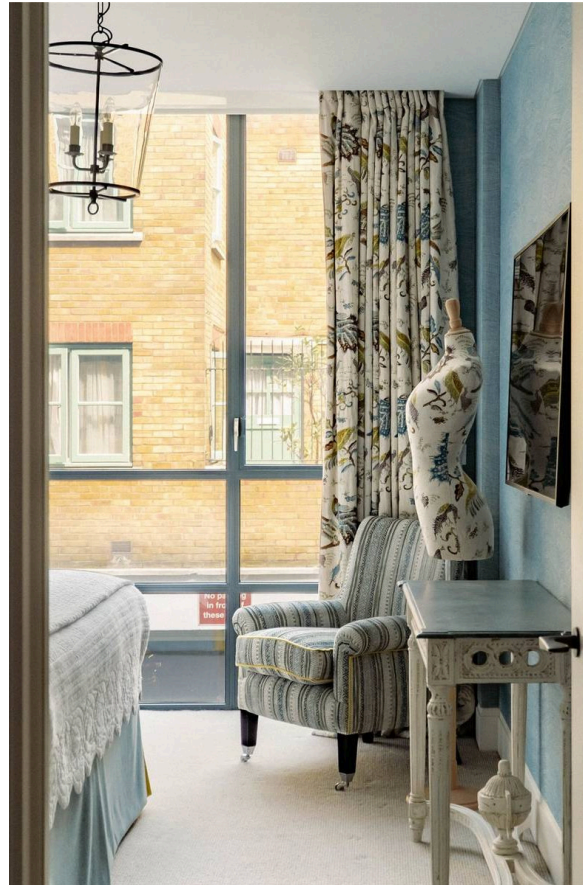


The Design

The apartment has been thoughtfully decorated throughout, combining contemporary elements with traditional charm. Notable features include wooden floors, high-quality textiles in sophisticated colour palettes, and carefully curated furnishings that add to the sense of elegance and comfort.



Russell Simpson



Richmond Mews



The Neighbourhood

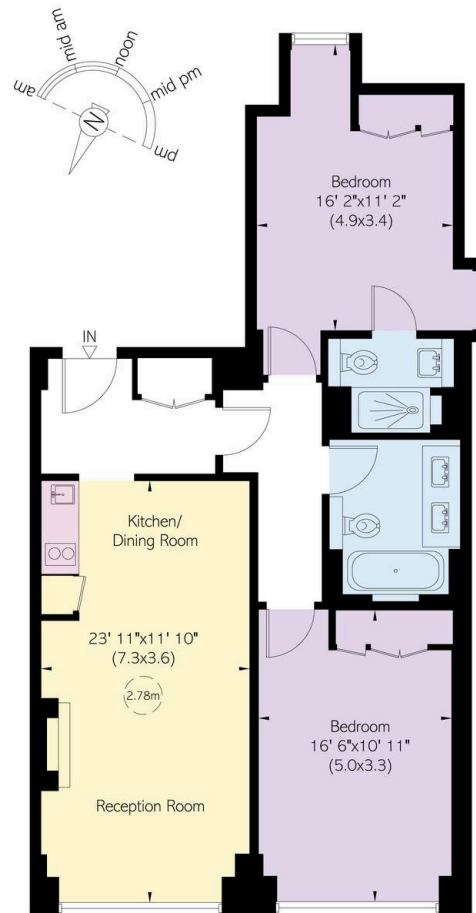
Richmond Mews is a picturesque cobbled mews originally built to provide stables for the grand houses of the area. This quiet residential address offers a village-like atmosphere in the heart of central London, with the property being moments away from the vibrant shops, restaurants and cultural attractions of the West End. The location provides excellent transport links while maintaining the secluded charm characteristic of London's historic mews properties.

Richmond Mews, W1

Approximate Internal Area
88sq ft/ 8.3 sq m

**RUSSELL
SIMPSON**

This plan is for layout guidance only. Not drawn to scale unless stated. Windows and door openings are approximate. Whilst every care is taken in the preparation of this plan, please check all dimensions, shapes, and compass bearings before making any decisions reliant upon them.



First Floor

**RUSSELL
SIMPSON**

Contact Us

+44 (0) 20 3761 9691

mayfair@russellsimpson.co.uk

In accordance with the Property Mis-Description Act 1991, the following details have been prepared in good faith, and are not intended to constitute part of an offer or contract. Any information contained herein (whether in the text, plans or photographs) is given in good faith but should not be relied upon as being a statement of representation of fact. Nothing in these Particulars shall be deemed to be a statement that the property is in good condition or otherwise nor that any services or facilities are in good working order. Any measurements of distances referred to herein are approximate only. October 2021