



## **RUSSELL SIMPSON**

A very special, newly renovated two  
bedroom flat, in an impressive  
building on Pont Street

PONT STREET  
KNIGHTSBRIDGE SW1X

Pont Street

£3,500 <sub>P/W</sub>

BEDROOMS 2	INTERNAL  1,214 <sub>SQ FT</sub>  112 <sub>SQM</sub>	OUTDOOR  25 <sub>SQ FT</sub>	FURNISHED STATUS  —
BATHROOMS 2		EPC  C	COUNCIL TAX  H



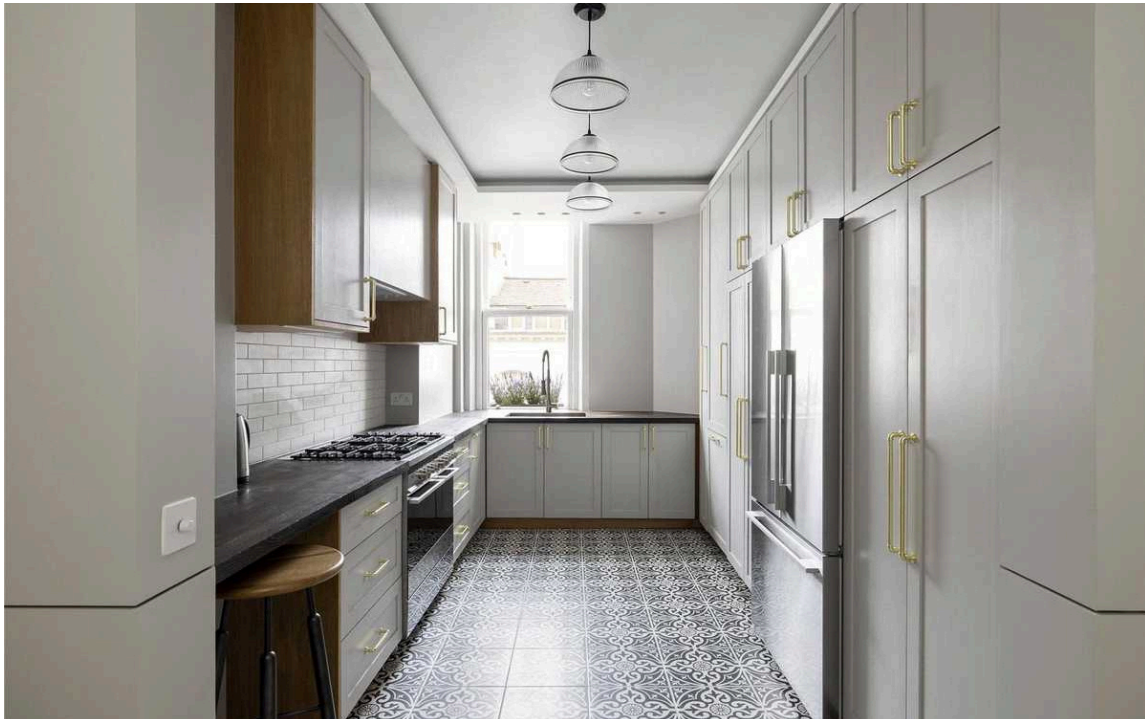
## The Property

This is a spacious two bedroom, two bathroom flat, on the second floor, which has been developed to a very high standard.

---

img 2

Kitchen





## The Bedrooms

There is a large main bedroom with built-in storage and immaculate ensuite shower room. The second bedroom, again has built in storage and is serviced by another pristine bathroom, that doubles up as a guest loo. There is a well appointed kitchen that leads through into an imposing reception room, with fantastic views down Pont Street.





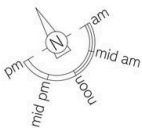


## The Neighbourhood

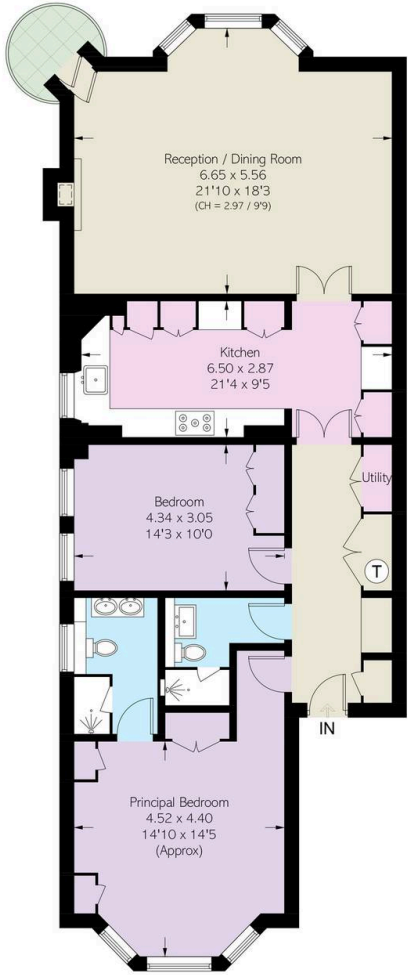
Pont Street supposedly takes its name from the French word 'Pont' meaning bridge and history suggests that the street was built to bridge the river Westbourne. This was a river that was dammed to form the serpentine. Pont Street is extremely well located for the shops, bars and restaurants in Knightsbridge, as well as being a short walk from Knightsbridge underground station.

**PONT STREET, SW1X**

Approximate Area = 1214 sq ft / 112.8 sq m  
Including Limited Use Area (15 sq ft / 1.4 sq m)  
Approximate External Area = 25 sq ft / 2.3 sq m



 = Reduced head height below 1.5m



Second Floor

**VIEWING ARRANGEMENTS**

Telephone: +44 (0) 20 7225 0277  
Email: [info@russellsimpson.co.uk](mailto:info@russellsimpson.co.uk)

This plan is for general guidance only. Not drawn to scale and not guaranteed. Figures and dimensions are approximate. Details of construction and materials are given for information only. All figures are approximate and subject to change. Please contact the sales team for further information.

**RUSSELL  
SIMPSON**

**RUSSELL  
SIMPSON**

---

## Contact Us

+44 (0) 20 7225 0277

151A Sydney Street  
London  
SW3 6NT

[chelsea@russellsimpson.co.uk](mailto:chelsea@russellsimpson.co.uk)

In accordance with the Property Mis-Description Act 1991, the following details have been prepared in good faith, and are not intended to constitute part of an offer or contract. Any information contained herein (whether in the text, plans or photographs) is given in good faith but should not be relied upon as being a statement of representation of fact. Nothing in these Particulars shall be deemed to be a statement that the property is in good condition or otherwise nor that any services or facilities are in good working order. Any measurements of distances referred to herein are approximate only. October 2021