

## **RUSSELL SIMPSON**

Newly renovated sixth-floor flat in  
the heart of Mayfair

NEW HEREFORD HOUSE  
MAYFAIR W1K

# New Hereford House

£1,950 <sub>P/W</sub>

BEDROOMS 2	INTERNAL  1,014 <sub>SQ FT</sub>  94 <sub>SQM</sub>	OUTDOOR  —	FURNISHED STATUS  Furnished
BATHROOMS 2		EPC C	COUNCIL TAX Westminster City, H

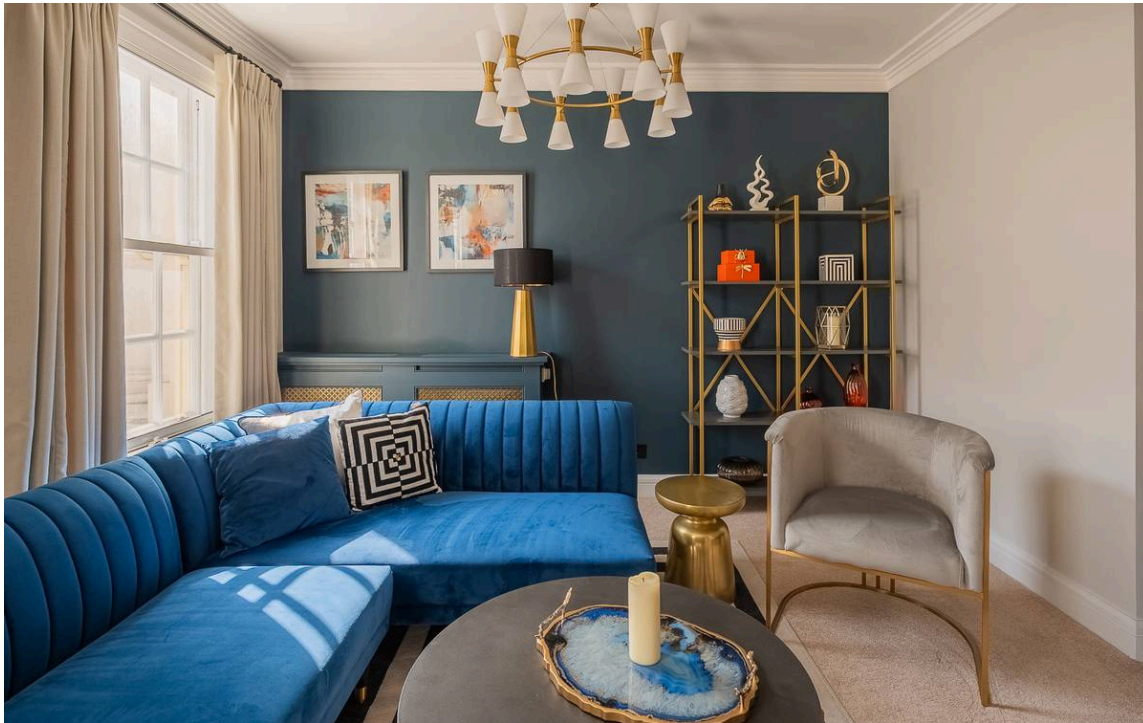
## The Property

A beautifully renovated two-bedroom flat on the sixth floor of this prestigious Mayfair address.

Throughout, the contemporary refurbishment has created bright, well-proportioned living spaces with excellent ceiling height and large windows that flood the rooms with natural light.







## Indoor Spaces

Stepping into the flat, you are welcomed by a bright reception room with large multi-paned windows. The well-proportioned space accommodates both comfortable seating and dining areas. Adjacent lies a thoughtfully fitted kitchen featuring modern units and integrated appliances, with a convenient breakfast area.





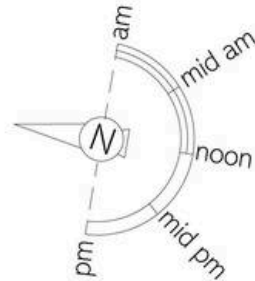
## The Bedrooms

The accommodation comprises two bedrooms. The principal bedroom benefits from an en-suite bathroom, whilst the second bedroom offers good proportions with excellent natural light. A separate bathroom, conveniently located near the kitchen, serves the second bedroom.



## The Neighbourhood

Park Street is a distinguished address in the heart of Mayfair, moments away from the renowned shopping and dining of Oxford Street and Bond Street. The area provides easy access to Green Park and Hyde Park Corner underground stations, with proximity to some of London's finest galleries, restaurants, and luxury retailers. The building benefits from lift access and porter services, adding convenience and security to this prime Mayfair location.

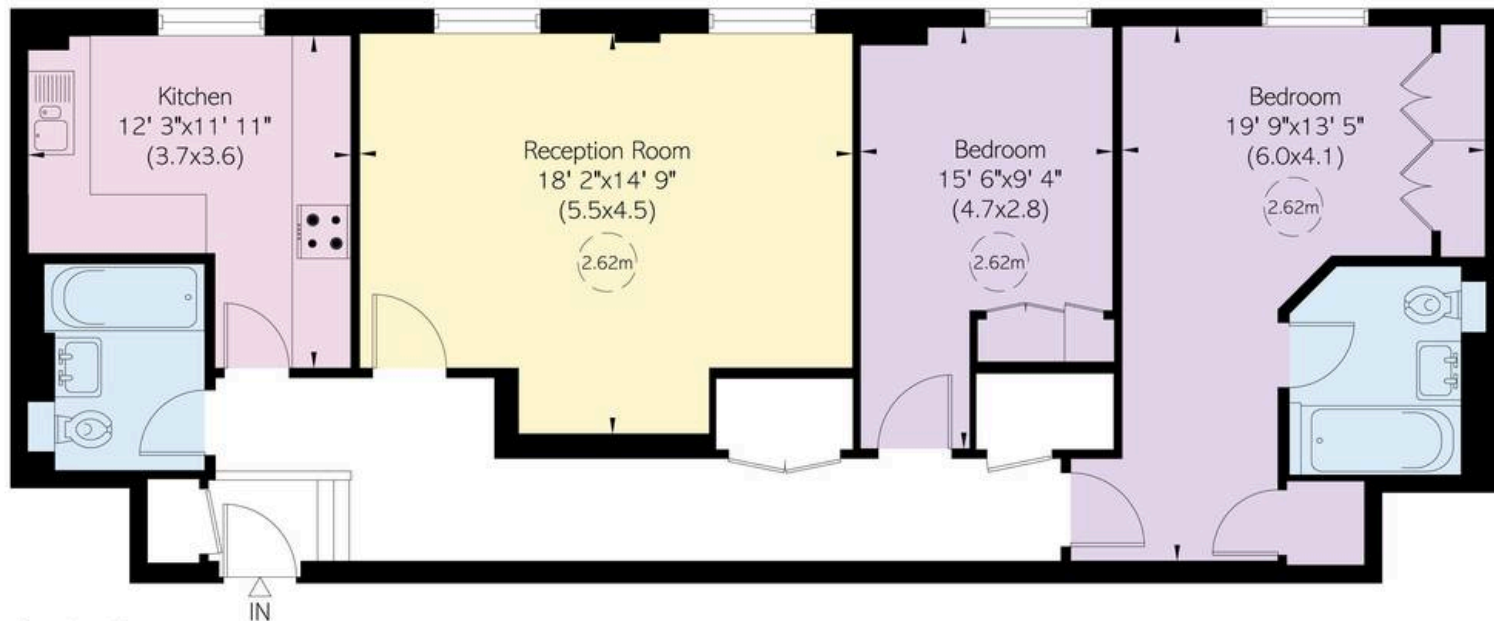


# New Hereford House, Park Street, W1

**RUSSELL  
SIMPSON**

**Approximate Internal Area**  
1,014 sq ft/ 94 sq m

This plan is for layout guidance only. Not drawn to scale unless stated. Windows and door openings are approximate. Whilst every care is taken in the preparation of this plan, please check all dimensions, shapes, and compass bearings before making any decisions reliant upon them.



Sixth Floor



**RUSSELL  
SIMPSON**

---

## Contact Us

+44 (0) 20 3761 9691

[mayfair@russellsimpson.co.uk](mailto:mayfair@russellsimpson.co.uk)

In accordance with the Property Mis-Description Act 1991, the following details have been prepared in good faith, and are not intended to constitute part of an offer or contract. Any information contained herein (whether in the text, plans or photographs) is given in good faith but should not be relied upon as being a statement of representation of fact. Nothing in these Particulars shall be deemed to be a statement that the property is in good condition or otherwise nor that any services or facilities are in good working order. Any measurements of distances referred to herein are approximate only. October 2021