



## **RUSSELL SIMPSON**

Spacious and unfurnished one  
bedroom flat with stunning views

ORMONDE GATE  
CHELSEA SW3

Ormonde Gate

£980 P/W

<div>BEDROOMS</div> <div>1</div>	<div>INTERNAL</div> <div>882 <small>SQ FT</small></div> <div>81 <small>SQM</small></div>	<div>OUTDOOR</div> <div>—</div>	<div>FURNISHED STATUS</div> <div>Unfurnished</div>
<div>BATHROOMS</div> <div>1</div>		<div>EPC</div> <div>D</div>	<div>COUNCIL TAX</div> <div>RBKC, F</div>



## The Property

Bright one bedroom flat on the second floor of this portered building overlooking Burton Court.

Stepping into the flat, a hallway connects the main rooms through the property. As you turn left you are welcomed by a large, light reception room with sash windows, an original fireplace and elegant cornicing throughout.

At the other end of the flat you will find the double principal bedroom, which has ample inbuilt storage and shelving. Both the integrated kitchen and bathroom are found in the heart of the property, completing this elegant flat in Chelsea.



img 1

Bedroom CGI

img 2

Living Room CGI

# The Neighbourhood

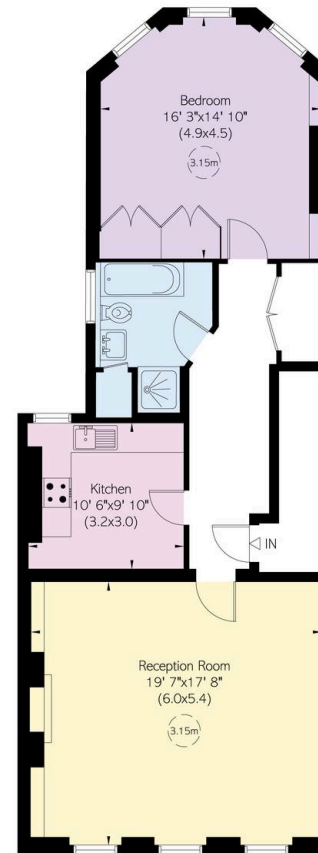
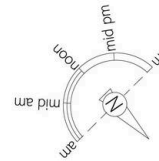
Ormonde Gate is adjacent to Royal Hospital and overlooking the wonderful green space of Burton Court. Just north is the famous King's road with all the shops, bars and restaurants that lead up to Sloane Square.

# Conway House, Ormonde Gate, SW3

Approximate Internal Area  
882 sq ft/ 82 sq m

**RUSSELL  
SIMPSON**

This plan is for layout guidance only.  
Not drawn to scale unless stated. Windows  
and door openings are approximate. Whilst  
every care is taken in the preparation of this  
plan, please check all dimensions, shapes,  
and compass bearings before making any  
decisions reliant upon them.



Second Floor

**RUSSELL  
SIMPSON**

---

## Contact Us

+44 (0) 20 7225 0277

151A Sydney Street  
London  
SW3 6NT

[chelsea@russellsimpson.co.uk](mailto:chelsea@russellsimpson.co.uk)

In accordance with the Property Mis-Description Act 1991, the following details have been prepared in good faith, and are not intended to constitute part of an offer or contract. Any information contained herein (whether in the text, plans or photographs) is given in good faith but should not be relied upon as being a statement of representation of fact. Nothing in these Particulars shall be deemed to be a statement that the property is in good condition or otherwise nor that any services or facilities are in good working order. Any measurements of distances referred to herein are approximate only. October 2021