



RUSSELL SIMPSON

An immaculately presented three
bedroom apartment

MALVERN COURT
SOUTH KENSINGTON SW7

Malvern Court

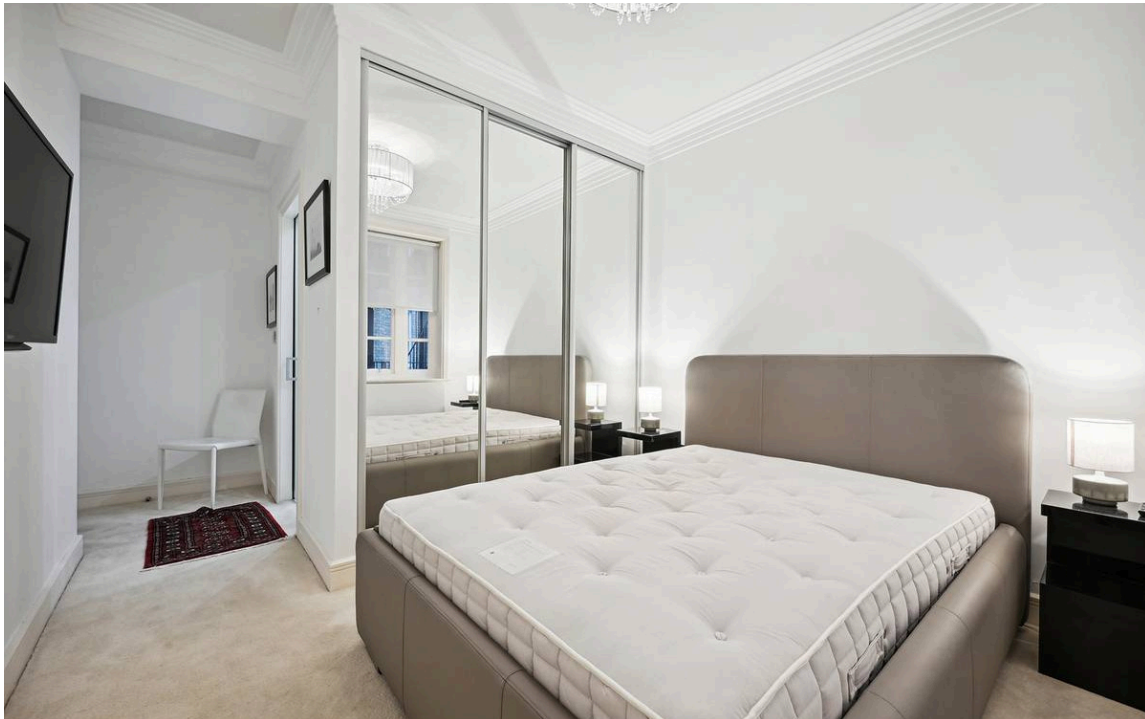
£1,300 _{P/W}

BEDROOMS 3	INTERNAL 1,222 _{SQ FT} 113 _{SQM}	OUTDOOR —	FURNISHED STATUS Furnished
BATHROOMS 2		EPC C	COUNCIL TAX RBKC



The Property

This apartment is perfectly positioned for all that South Kensington has to offer.





Indoor Spaces

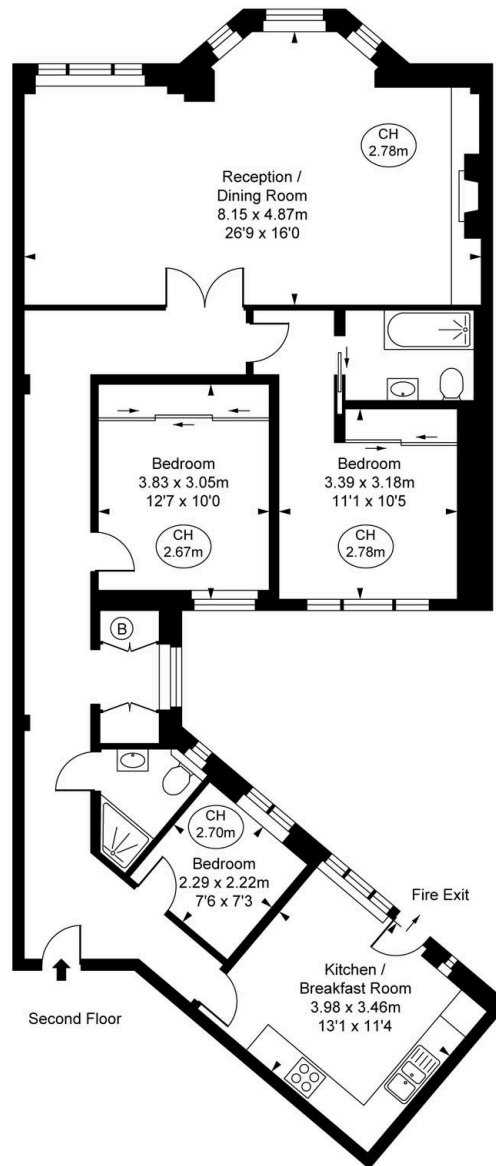
Laid out across the second floor, all rooms are on the same level. There is a modern kitchen with space for informal dining, which has all the modern appliances expected. The large living room looks over South Kensington and across Onslow Square, and has a more formal dining area to one end. The principle bedroom has good storage and a modern en suite bathroom, and there is also a well sized second double bedroom and family shower room. In addition, there is a 3rd single bedroom or nursery.





The Neighbourhood

Malvern Court is well situated in close proximity to the plethora of shops, restaurants and museums of South Kensington, alongside the excellent transport links, with Knightsbridge and Sloane Square only a short walk away.



Malvern Court, SW7
Approximate Gross Internal Area
111.01 sq m / 1,195 sq ft

(CH = Ceiling Heights)



This plan is not to scale. It is for guidance and not for valuation purposes.
All measurements and areas are approximate only, and have been prepared in accordance with the current edition of the RICS Code of Measuring Practice.
© Fulham Performance

**RUSSELL
SIMPSON**

Contact Us

+44 (0) 20 7225 0277

151A Sydney Street
London
SW3 6NT

chelsea@russellsimpson.co.uk

In accordance with the Property Mis-Description Act 1991, the following details have been prepared in good faith, and are not intended to constitute part of an offer or contract. Any information contained herein (whether in the text, plans or photographs) is given in good faith but should not be relied upon as being a statement of representation of fact. Nothing in these Particulars shall be deemed to be a statement that the property is in good condition or otherwise nor that any services or facilities are in good working order. Any measurements of distances referred to herein are approximate only. October 2021