



RUSSELL SIMPSON

Elegant two-bedroom flat with
access to historic garden square

ONSLow SQUARE
SOUTH KENSINGTON SW7

Onslow Square

£1,595 _{P/W}

<div>BEDROOMS</div> <div>2-2</div>	<div>INTERNAL</div> <div>1,244 _{SQ FT}</div> <div>115 _{SQM}</div>	<div>OUTDOOR</div> <div>—</div>	<div>FURNISHED STATUS</div> <div>Unfurnished</div>
<div>BATHROOMS</div> <div>2-2</div>		<div>EPC</div> <div>D</div>	<div>COUNCIL TAX</div> <div>—</div>



The Property

Entering the property, the front hall opens onto each room in the flat. The reception room is a generous space with separate dining and seating areas, as well as wooden floors and traditional sash windows looking out on the square. Next door, the principal bedroom offers considerable storage space and an ensuite bathroom, with a wide bank of windows sharing the views over the square.

Opposite, is a well-appointed kitchen with a tasteful colour scheme. A second bedroom and second bathroom occupy the remainder of the property.

Residents have access to the award-winning gardens of Onslow Square. These are some of the largest private gardens in the borough, laid out with lawns, flowerbeds and shaded areas of woodland.

The grand townhouses of Onslow Square were built by Charles James Freafe, architect of many of the area's most impressive facades. Over the years, this square has been home to several celebrated figures, including the novelist William Makepeace Thackeray, author of *Vanity Fair*. Today it forms a calm and settled space just a few minutes' walk from South Kensington underground station, as well as the restaurants and shops of the Fulham Road.



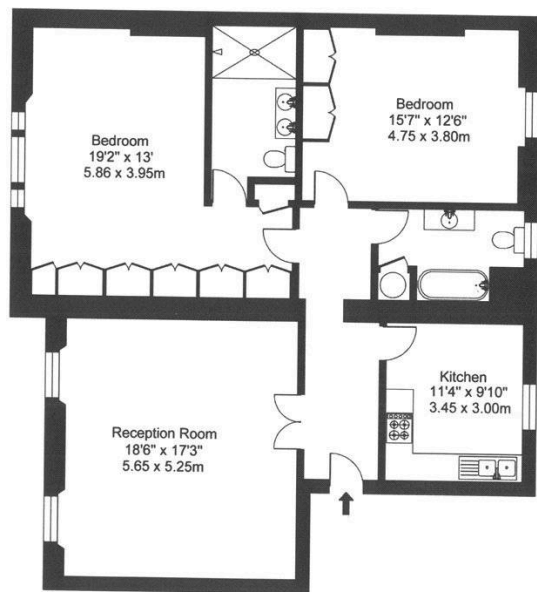
img 1

Living Room

img 2

Kitchen

17 Onslow Square
South Kensington, London SW7
Approximate Gross Internal Floor Area
1,244 sq ft / 115.5 sq m

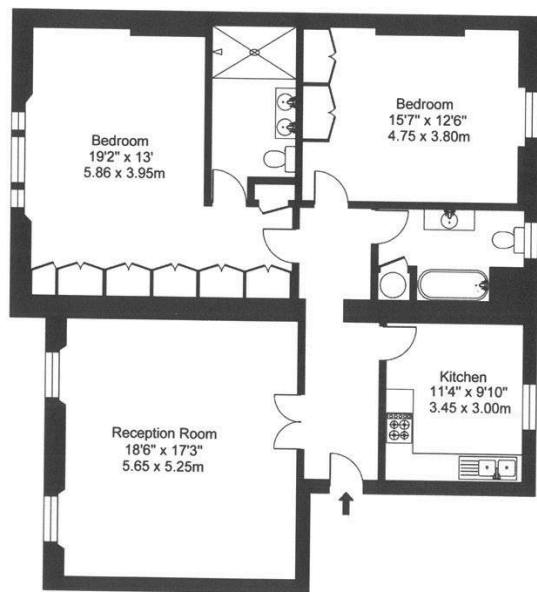


Second Floor

ILLUSTRATION FOR IDENTIFICATION PURPOSES ONLY

ALL MEASUREMENTS ARE MAXIMUM, AND INCLUDE WINDOW BAYS AND WARDROBES WHERE APPLICABLE
THIS PLAN MUST NOT BE REPRODUCED BY ANY OTHER PERSON WITHOUT PERMISSION.

17 Onslow Square
South Kensington, London SW7
Approximate Gross Internal Floor Area
1,244 sq ft / 115.5 sq m



Second Floor

ILLUSTRATION FOR IDENTIFICATION PURPOSES ONLY

ALL MEASUREMENTS ARE MAXIMUM, AND INCLUDE WINDOW BAYS AND WARDROBES WHERE APPLICABLE
THIS PLAN MUST NOT BE REPRODUCED BY ANY OTHER PERSON WITHOUT PERMISSION.

**RUSSELL
SIMPSON**

Contact Us

+44 (0) 20 7225 0277

151A Sydney Street
London
SW3 6NT

chelsea@russellsimpson.co.uk

In accordance with the Property Mis-Description Act 1991, the following details have been prepared in good faith, and are not intended to constitute part of an offer or contract. Any information contained herein (whether in the text, plans or photographs) is given in good faith but should not be relied upon as being a statement of representation of fact. Nothing in these Particulars shall be deemed to be a statement that the property is in good condition or otherwise nor that any services or facilities are in good working order. Any measurements of distances referred to herein are approximate only. October 2021