



RUSSELL SIMPSON

A spacious & bright apartment with
3/4 bedrooms in South Kensington.

MALVERN COURT
SOUTH KENSINGTON SW7

Malvern Court

Let

<div>BEDROOMS</div> <div>4–4</div>	<div>INTERNAL</div> <div>1,436 <small>SQ FT</small></div> <div>133 <small>SQM</small></div>	<div>OUTDOOR</div> <div>—</div>	<div>FURNISHED STATUS</div> <div>Unfurnished</div>
<div>BATHROOMS</div> <div>2–2</div>		<div>EPC</div> <div>C</div>	<div>COUNCIL TAX</div> <div>—</div>



The Property

The property has wood floors throughout and double glazing. Lift and porter.





Indoor Spaces

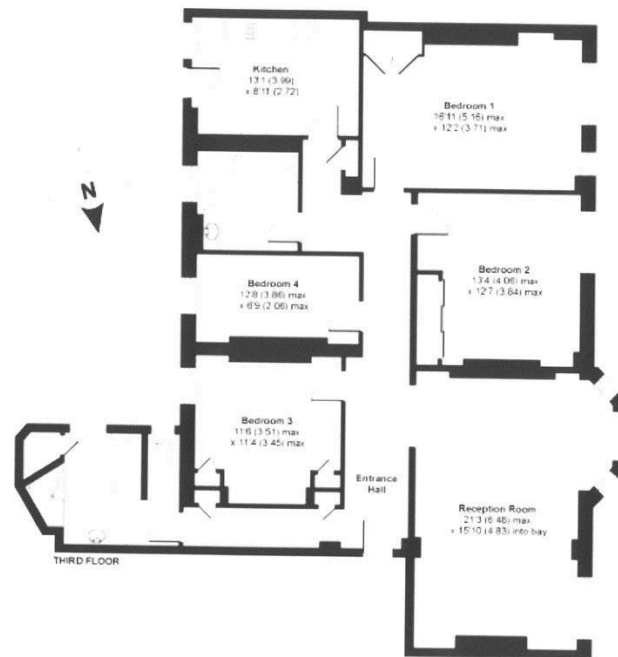
The accommodation comprises reception room; study/4th bedroom; master bedroom with fitted wardrobes and bathroom; 2 further double bedrooms with good storage; fully fitted kitchen. Available Unfurnished.





The Neighbourhood

Malvern Court is well situated in close proximity to the plethora of shops, restaurants and museums of South Kensington, alongside the excellent transport links, with Knightsbridge and Sloane Square only a short walk away.



GROSS INTERNAL AREA 1436 SQFT 133.4 SQM

**RUSSELL
SIMPSON**

Contact Us

+44 (0) 20 7225 0277

151A Sydney Street
London
SW3 6NT

chelsea@russellsimpson.co.uk

In accordance with the Property Mis-Description Act 1991, the following details have been prepared in good faith, and are not intended to constitute part of an offer or contract. Any information contained herein (whether in the text, plans or photographs) is given in good faith but should not be relied upon as being a statement of representation of fact. Nothing in these Particulars shall be deemed to be a statement that the property is in good condition or otherwise nor that any services or facilities are in good working order. Any measurements of distances referred to herein are approximate only. October 2021