



RUSSELL SIMPSON

Elegantly designed two bedroom two
bathroom apartment in Lancer
Square, Kensington

LANCER SQUARE
KENSINGTON W8

Lancer Square

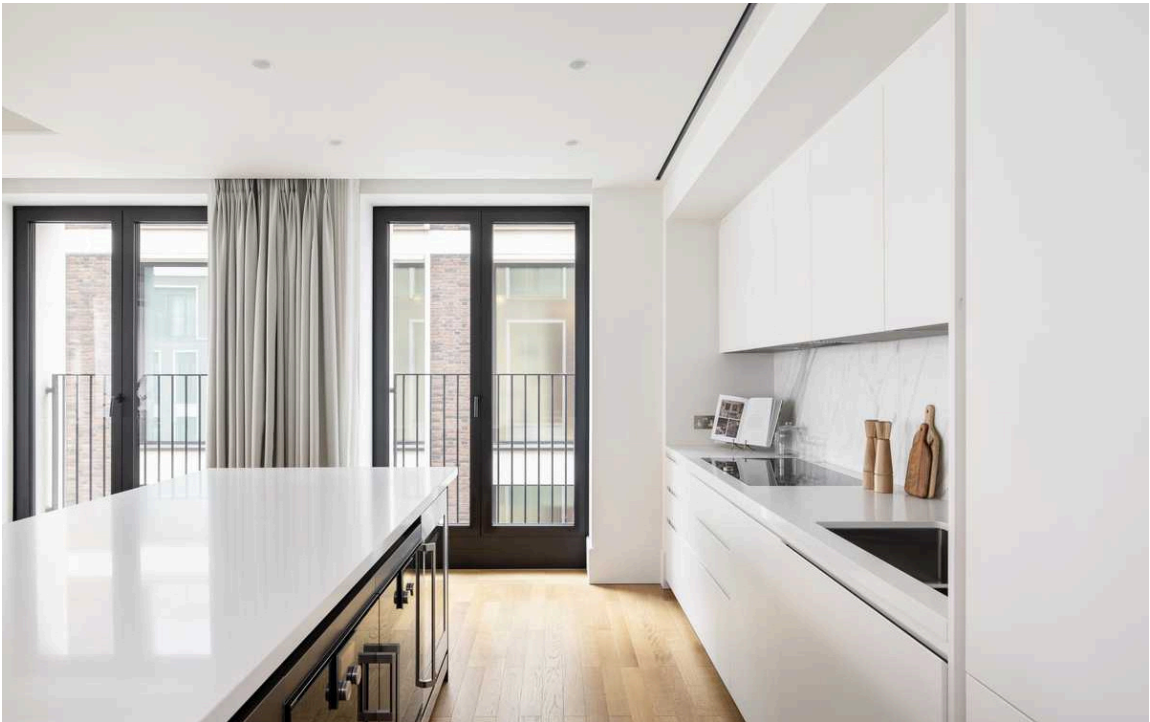
£3,450 _{P/W}

BEDROOMS 2	INTERNAL 1,553 _{SQ FT} 144 _{SQM}	OUTDOOR 84 _{SQ FT}	FURNISHED STATUS Furnished
BATHROOMS 2		EPC B	COUNCIL TAX —



The Property

Finished to the highest standard with open plan kitchen and living area leading to a private terrace, and plenty of storage space. The property has two bedrooms, each with their own ensuite bathroom.



Indoor Spaces

Lancer Square is a very sought after development with 24 hour concierge, swimming pool and gym. Situated within walking distance to the open green spaces of Hyde Park and Holland Park.

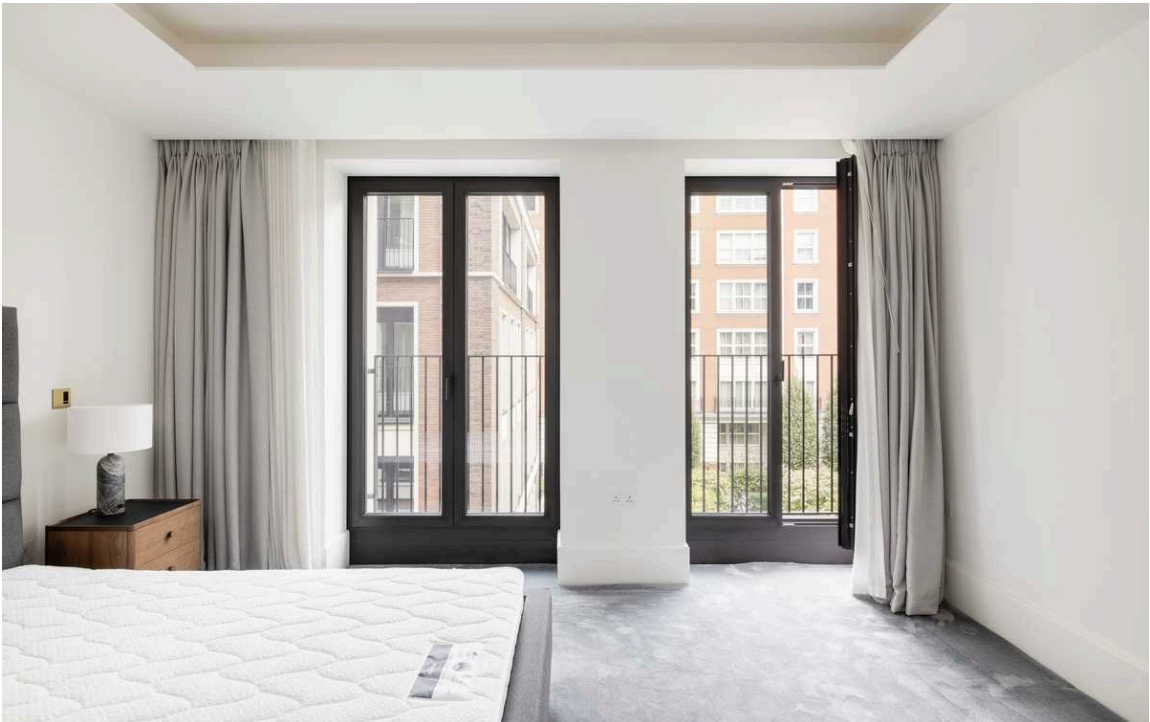
Multiple transport links as well as restaurants, shops and boutiques along Kensington High Street and Notting Hill Gate.

img 1

Kitchen

img 2

Bedroom



The Neighbourhood

Lancer Square is located just off of Kensington High Street and is a stones throw away from the lovely open spaces of Kensington Gardens and Hyde Park, as well as a variety of shops and restaurants.



img 1

Communal Garden

img 2

Courtyard

Lancer Square, W8

Approximate area
144.3 sq m / 1553 sq ft

Approximate external area
7.9 sq m / 85 sq ft

**RUSSELL
SIMPSON**

This plan is for layout guidance only.
Not drawn to scale unless stated. Windows
and door openings are approximate. Whilst
every care is taken in the preparation of this
plan, please check all dimensions, shapes,
and compass bearings before making any
decisions reliant upon them.



**RUSSELL
SIMPSON**

Contact Us

+44 (0) 20 3761 9691

13 Kensington Square
London
W8 5HD

kensington@russellsimpson.co.uk