



RUSSELL SIMPSON

An exceptional three bedroom
apartment on the fifth floor in this
outstanding development

ONE HYDE PARK
KNIGHTSBRIDGE SW1X

One Hyde Park

£11,500 P/W

<div>BEDROOMS</div> <div>3</div>	<div>INTERNAL</div> <div>3,392 <small>SQ FT</small></div> <div>315 <small>SQM</small></div>	<div>OUTDOOR</div> <div>—</div>	<div>FURNISHED STATUS</div> <div>Furnished</div>
<div>BATHROOMS</div> <div>3</div>		<div>EPC</div> <div>C</div>	<div>COUNCIL TAX</div> <div>—</div>



The Property

The combination of leading architects, designers, artists and the Mandarin Oriental Hotel Group ensures that One Hyde Park delivers a unique experience and service on every level.

Internationally renowned interior designers Candy & Candy have designed all the communal areas including the spa and recreation facilities. The apartment is located on the fifth floor and enjoys south facing views over Knightsbridge. The apartment is a luxurious and comfortable home within this prestigious development. The contrast between bespoke timber joinery and soft textured fabrics combined with striking wall coverings has created a relaxed, spacious living area. Bespoke furniture utilises the area to maximum effect creating an inviting and personal space.



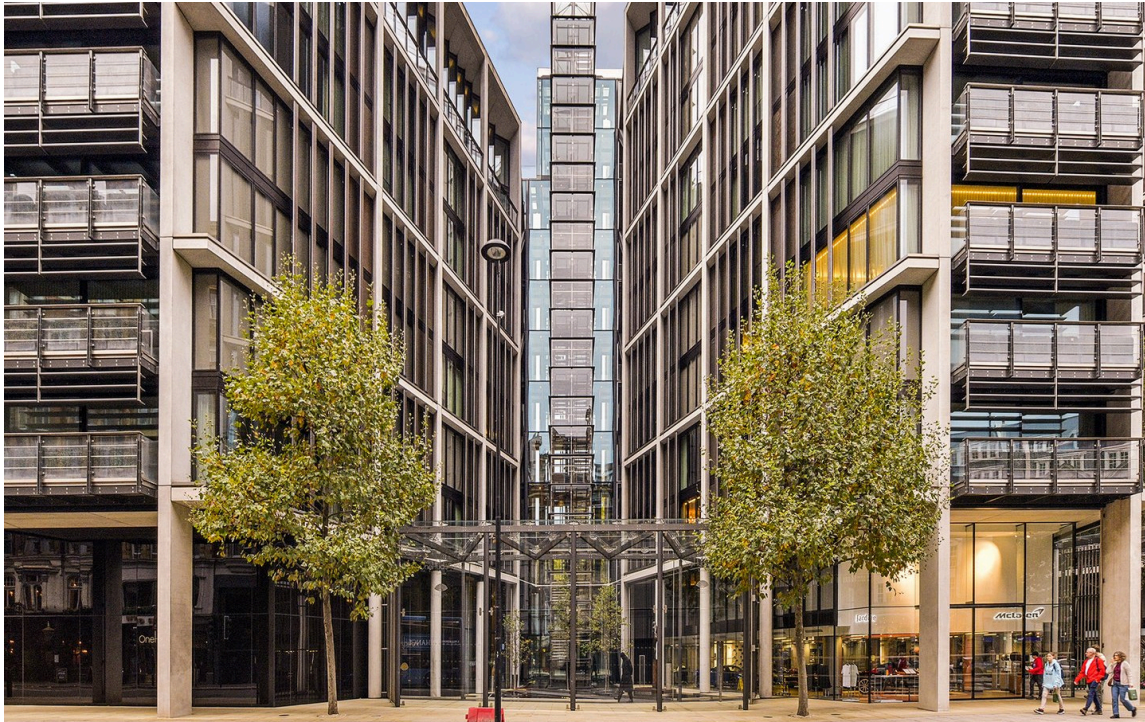


Indoor Spaces and Features

The apartment comprises of three double bedrooms, three en suite bathrooms, reception room with balcony, kitchen and dining room, guest cloakroom and underground parking space. The apartment also comes with its own designated wine cellar, access to 24/7 concierge desk and Mandarin Oriental residents service.

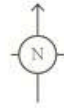
The apartment has an audio visual system and programmed lighting controls, fresh air supply, cooling and heating. The exclusive on-site leisure and spa facilities at One Hyde Park include private cinema, private events room for large parties, virtual experience room, squash court, gym, two private exercise studios, 21 metre ozone pool, Jacuzzi, two saunas, two steam rooms and two treatment rooms with en suite relaxation rooms.



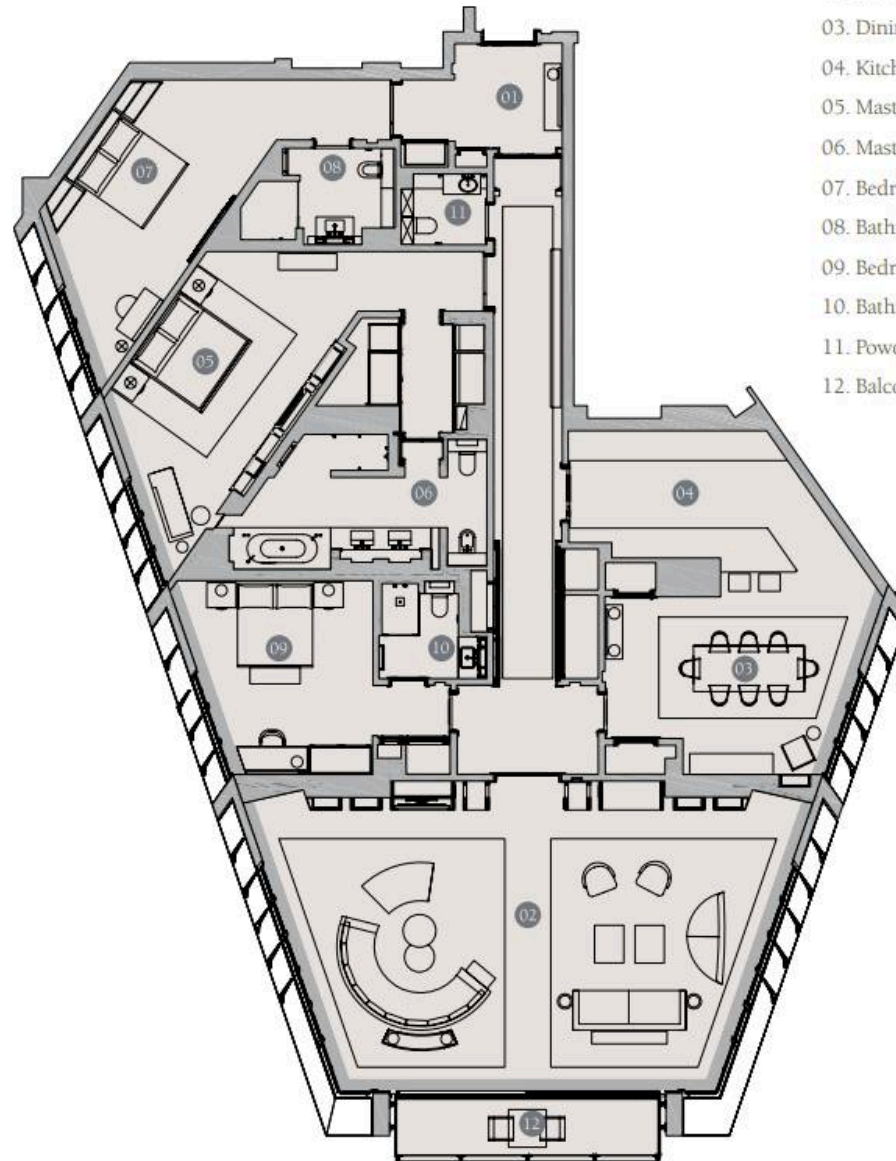


The Neighbourhood

One Hyde Park is located in the heart of Knightsbridge with all that it has to offer. The world famous Harrods is minutes away, as well as Harvey Nicols and an array of other high end shops and restaurants.



5th Floor



- 01. Entrance hallway and lobby
- 02. Reception
- 03. Dining room
- 04. Kitchen
- 05. Master bedroom
- 06. Master bathroom
- 07. Bedroom two
- 08. Bathroom two
- 09. Bedroom three
- 10. Bathroom three
- 11. Powder room
- 12. Balcony

**RUSSELL
SIMPSON**

Contact Us

+44 (0) 20 7225 0277

151A Sydney Street
London
SW3 6NT

chelsea@russellsimpson.co.uk

In accordance with the Property Mis-Description Act 1991, the following details have been prepared in good faith, and are not intended to constitute part of an offer or contract. Any information contained herein (whether in the text, plans or photographs) is given in good faith but should not be relied upon as being a statement of representation of fact. Nothing in these Particulars shall be deemed to be a statement that the property is in good condition or otherwise nor that any services or facilities are in good working order. Any measurements of distances referred to herein are approximate only. October 2021