



RUSSELL SIMPSON

Elegant three-bedroom apartment
with lift access

HYDE PARK SQUARE
BAYSWATER W2

Hyde Park Square

£2,308 _{P/W}

BEDROOMS 3	INTERNAL 1,995 _{SQ FT} 185 _{SQM}	OUTDOOR —	FURNISHED STATUS Furnished
BATHROOMS 3		EPC C	COUNCIL TAX Westminster City, H



The Property

Beautifully presented three-bedroom apartment on the second floor.

Throughout the flat, the restrained contemporary interiors combine comfort with elegance, while the wooden floors and high ceilings create a sense of grandeur befitting this prestigious address.

Indoor Spaces

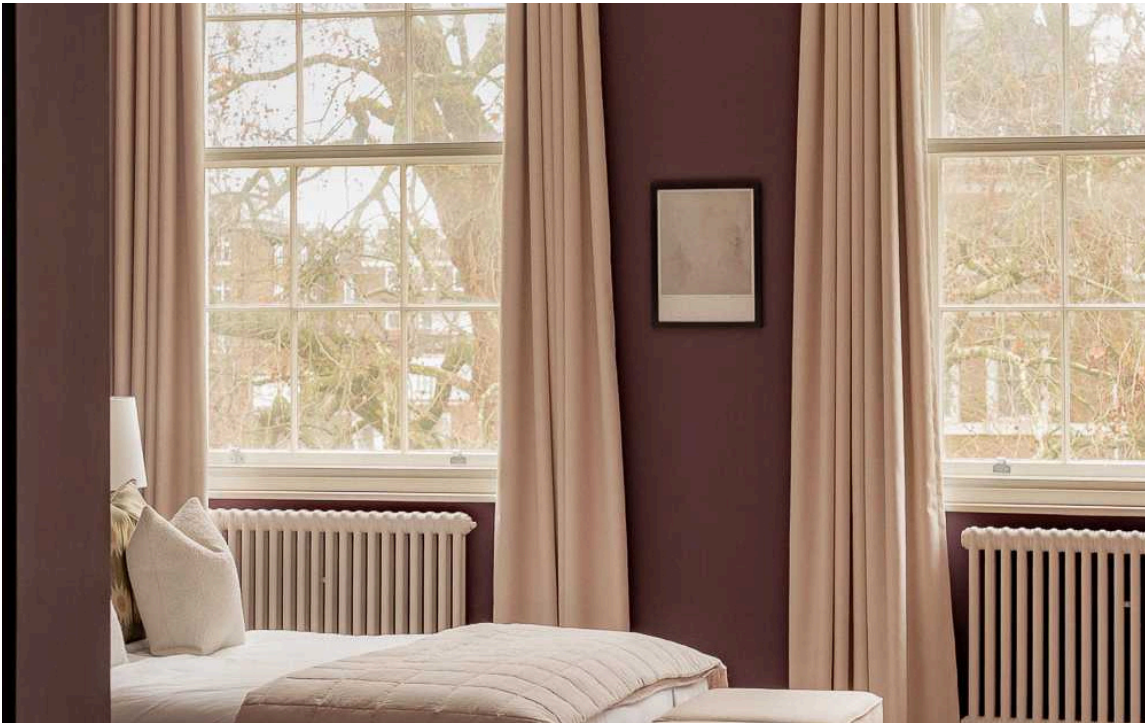


Entering the flat on the second floor, you step into a welcoming entrance corridor that leads to the heart of the home. The generous reception and dining space is filled with light from three large windows that overlook the leafy square gardens, creating a bright and airy atmosphere. The room features elegant proportions with high ceilings that add to the sense of scale, while a superb fireplace with stone surround creates an impressive focal point. The neutral décor and wooden floors create a sophisticated contemporary style throughout this graceful living space.

The Kitchen

The separate eat-in kitchen is thoughtfully designed with fitted units and dark stone countertops. A charming breakfast table provides space for informal dining, while the kitchen's practical layout maximizes the available space. Large windows fill the room with natural light and offer pleasant garden views.

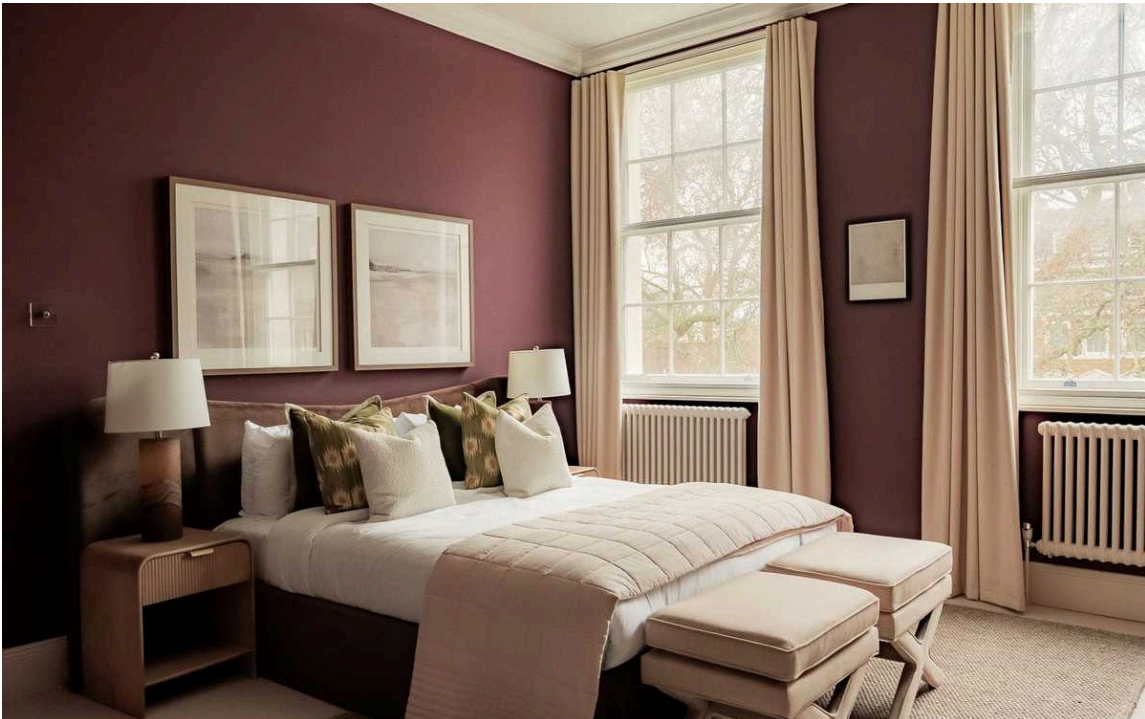




The Bedrooms

The accommodation includes three well-proportioned bedrooms, each benefiting from built-in storage space.

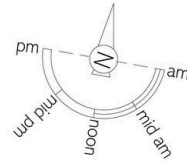
The principal bedroom features an impressive en-suite bathroom with modern fixtures, while the second bedroom also benefits from its own en-suite facility. The third bedroom is served by a separate shower room, ensuring excellent convenience for family living or guests. The inbuilt storage throughout the bedrooms adds to the property's practical appeal.





The Neighbourhood

Hyde Park Square is a quiet residential address moments away from the open spaces of Hyde Park. This attractive street of white stucco townhouses sits within easy reach of Marble Arch and the upmarket boutiques of Oxford Street. The area offers excellent transport links with Marble Arch Underground station nearby, providing swift access to the West End and City. Local amenities include the many restaurants and shops of the Edgware Road, while the artistic treasures of the Wallace Collection are a short walk away. The peaceful garden square provides a tranquil retreat from the energy of central London, making this an exceptional location for sophisticated city living.



Hyde Park Square, W₂

**RUSSELL
SIMPSON**

Approximate Internal Area
1,995 sq ft/ 185 sq m

This plan is for layout guidance only. Not drawn to scale unless stated. Windows and door openings are approximate. Whilst every care is taken in the preparation of this plan, please check all dimensions, shapes, and compass bearings before making any decisions reliant upon them.



Second Floor

**RUSSELL
SIMPSON**

Contact Us

+44 (0) 20 3761 9691

13 Kensington Square
London
W8 5HD

kensington@russellsimpson.co.uk