



RUSSELL SIMPSON

Magnificent fully detached mansion
with garage parking and a 3,000 sq
ft garden, to rent on a private road

HYDE PARK GATE
SOUTH KENSINGTON SW7

Hyde Park Gate

£13,000 P/W

BEDROOMS 7	INTERNAL 5,898 SQ FT	OUTDOOR 3,291 SQ FT	FURNISHED STATUS Furnished / Unfurnished
BATHROOMS 4	547 SQM	EPC E	COUNCIL TAX H



The Property

Exceptionally wide family home with classical proportions and an expansive garden flush to the ground floor, on a prestigious street

Stepping into the house on the ground floor, the front door opens onto an impressive entrance hall. On one side are a pair of well-proportioned drawing rooms flowing into one another. Both rooms have high ceilings, while the larger includes three double French doors leading out into the garden. Opposite is a stunning 290 sq ft formal dining room with full-length windows and a double aspect creating a bright and beautiful space.

CGI images have been used.



Indoro Spaces

This floor also features a kitchen with modern units, its own garden access and a convenient utility room. Furthermore, there is pantry with separate street access and a guest WC. Several of the downstairs rooms provide air conditioning.

CGI images have been used.





The Bedrooms

The second floor consists of five bedrooms. The generous principal bedroom suite includes a dressing room and an ensuite bathroom with a bath. A bathroom and a shower room serve the other four bedrooms, two of which have air conditioning.

The third floor features two more bedrooms, sharing a bathroom. There is also considerable loft storage space, and further storage space in the basement.

img 1

CGI image



The Design

The house is currently being redecorated and will be presented in immaculate condition. Restrained interiors combine classical elegance with contemporary convenience, adding to the sense of brightness and space throughout.





Outdoor Spaces

This beautiful house features a generous rear garden with a lawn, planted borders and a paved area for outdoor dining. It also offers a garage with off-street parking for one car, along with two parking spaces in front of the house, and a home gym.



The Neighbourhood

Hyde Park Gate is one of the most prestigious addresses in London with notable former residents including Winston Churchill. The name is shared by two parallel roads leading south from the park, lined with embassies, private homes and mansion flats. Due to its location, the private road provides both privacy and security.

The property is exceptionally well-positioned. Hyde Park and Kensington Gardens are both a short distance away, while Gloucester Road underground station is also close. In addition, the world-class cultural institutions of South Kensington and the exceptional restaurants and shops of Kensington High Street are within easy reach.



Hyde Park Gate, SW7

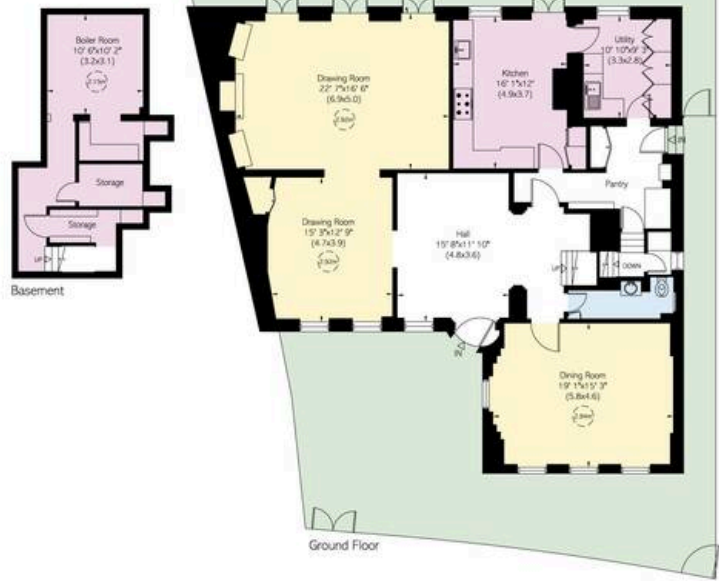
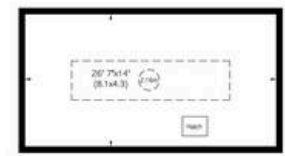
RUSSELL SIMPSON

Approximate Internal Area including limited use area, loft, garage and Office
 5,898 sq ft / 548 sq m

Outside Area
 3,291 sq ft / 306 sq m

This plan is for layout guidance only. Not drawn to scale unless stated. Windows and door openings are approximate. Whilst every care is taken in the preparation of this plan, please check all dimensions, shapes, and compass bearings before making any decisions reliant upon them.

Reduced head height below 1.9m



**RUSSELL
SIMPSON**

Contact Us

+44 (0) 20 7225 0277

151A Sydney Street
London
SW3 6NT

chelsea@russellsimpson.co.uk