



**RUSSELL
SIMPSON**

Elegant studio apartment with lift
and porter near Bond Street

HILL STREET
MAYFAIR W1J

Hill Street

£630 P/W

BEDROOMS 0	INTERNAL 302 <small>SQ FT</small>	OUTDOOR —	FURNISHED STATUS Furnished
BATHROOMS 1	28 <small>SQM</small>	EPC C	COUNCIL TAX Westminster City



The Property

A beautifully presented studio apartment with lift and porter.

Entering the flat on the fourth floor, you step into a well-designed studio that maximises space and light. The main living area is exceptionally bright, featuring large windows that fill the space with natural light. High ceilings create a superb sense of scale and openness throughout this thoughtfully planned home.

The kitchen is elegantly integrated into the main space, fitted with contemporary units and designed in a refined style. The layout flows beautifully, with the sleeping area positioned to provide privacy while maintaining the open-plan feel of the studio.

Indoor Spaces

A well-appointed shower room features modern fixtures and fittings, presented in excellent condition.

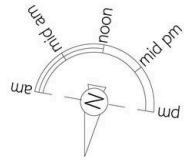
Built-in storage solutions throughout ensure the studio remains uncluttered and graceful, making the most of every square foot. The studio has been decorated in a sophisticated contemporary style with careful attention to detail.





The Neighbourhood

Hill Street is a prestigious Mayfair address, moments away from the luxury shopping of Bond Street and the green spaces of Berkeley Square. The location offers exceptional access to some of London's finest restaurants, galleries, and cultural attractions. Green Park and Hyde Park are within easy reach, providing welcome outdoor space in the heart of the capital. The area is renowned for its upmarket boutiques and sophisticated dining establishments, while excellent transport links include Bond Street Underground station just a short walk away. This prime W1 location places residents at the centre of London's most desirable district, with the artistic treasures of the Royal Academy and the refined streets of St James's all within walking distance.

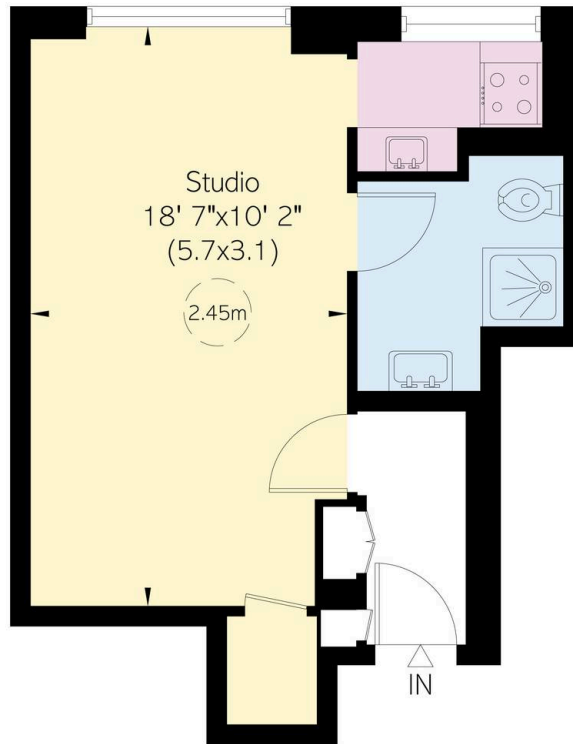


Hill Street, W1

**RUSSELL
SIMPSON**

Approximate Internal Area
302 sq ft / 28 sq m

This plan is for layout guidance only. Not drawn to scale unless stated. Windows and door openings are approximate. Whilst every care is taken in the preparation of the plan, please check all dimensions, shapes, and compass bearings before making any decisions reliant upon them.



Fourth Floor

**RUSSELL
SIMPSON**

Contact Us

+44 (0) 203 815 9144

mayfair@russellsimpson.co.uk

In accordance with the Property Mis-Description Act 1991, the following details have been prepared in good faith, and are not intended to constitute part of an offer or contract. Any information contained herein (whether in the text, plans or photographs) is given in good faith but should not be relied upon as being a statement of representation of fact. Nothing in these Particulars shall be deemed to be a statement that the property is in good condition or otherwise nor that any services or facilities are in good working order. Any measurements of distances referred to herein are approximate only. October 2021