

RUSSELL SIMPSON

Artistic house in Chelsea with bright
and spacious interiors to rent

GUNTER GROVE
WEST CHELSEA SW10

Gunter Grove

£1,750 _{P/W}

<div>BEDROOMS</div> <div>3–3</div>	<div>INTERNAL</div> <div>1,182 _{SQ FT}</div> <div>109 _{SQM}</div>	<div>OUTDOOR</div> <div>129 _{SQ FT}</div>	<div>FURNISHED STATUS</div> <div>Furnished</div>
<div>BATHROOMS</div> <div>2–2</div>		<div>EPC</div> <div>C</div>	<div>COUNCIL TAX</div> <div>RBKC, G</div>

The Property

Characterful three bedroom house with creative past moments away from the Fulham Road.

img 1

Skylight

img 2

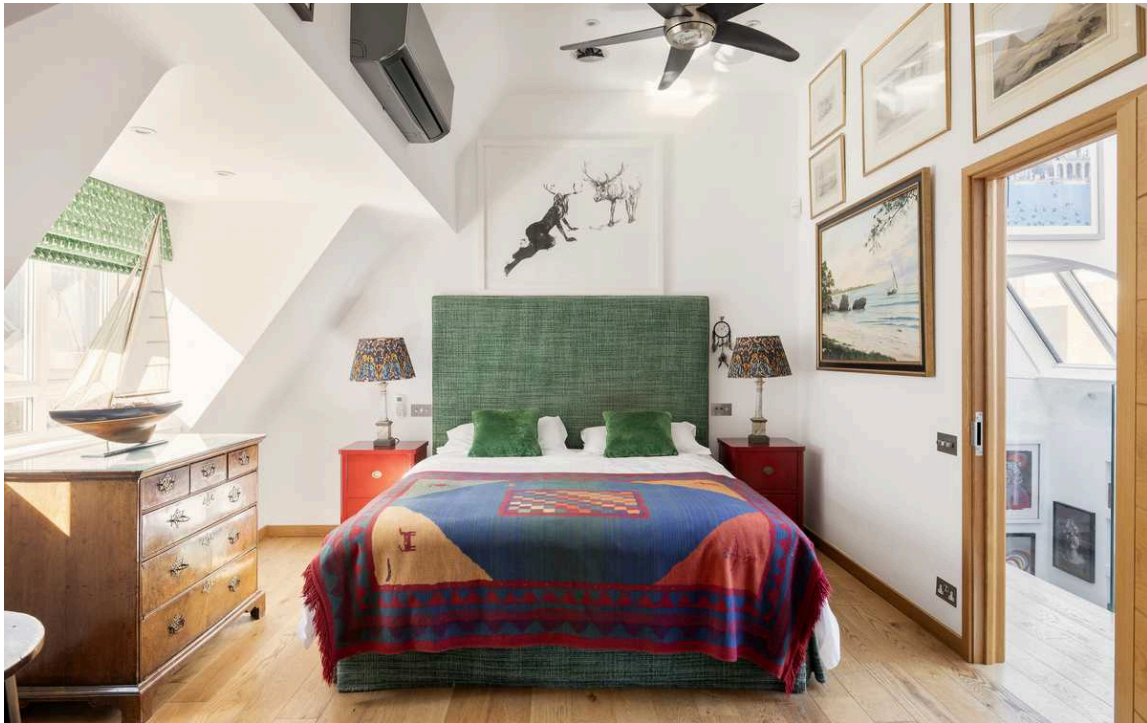
Open Plan Living





Indoor Spaces

Entering the house on the ground floor, the front door leads directly into a large reception room. This includes an open-plan kitchen with a central island and breakfast bar, as well as separate dining and seating areas. The room has a wonderful sense of brightness and space thanks to overhead skylights and a double-height roof above the seating area. In addition, this floor contains a bedroom with an ensuite bathroom and a guest WC.



The Bedrooms

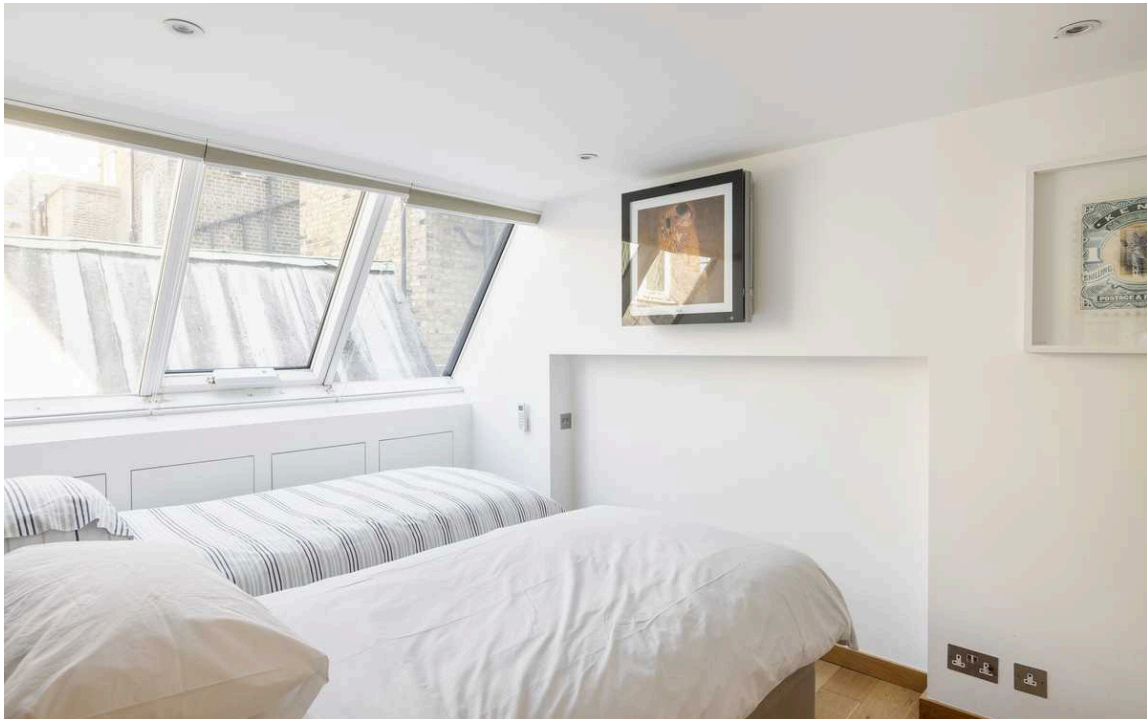
Upstairs, on the first floor, are two more bedrooms and a well-proportioned bathroom. Both rooms contain inbuilt storage, and the larger has access to a balcony.

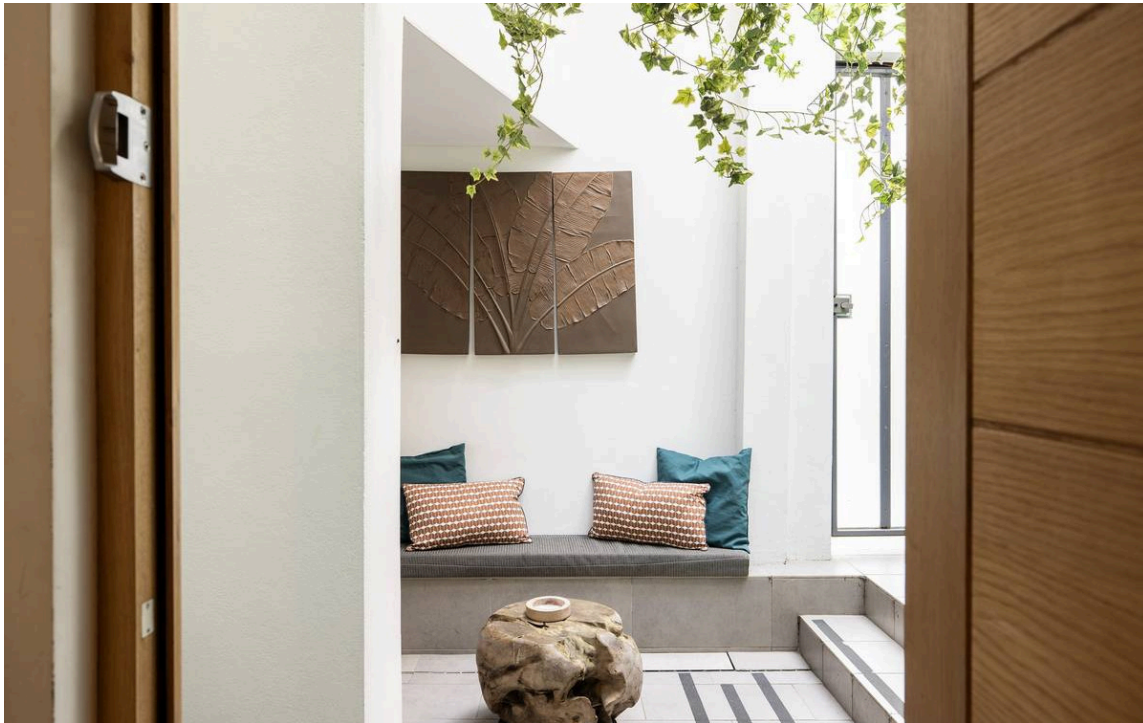
img 1

Principal Bedroom

img 2

Twin Bedroom





The Design

The interiors are designed in a contemporary style, and the property has air conditioning and underfloor heating throughout. It was previously owned by a musician and still preserves a creative atmosphere.

img 1

Reading Spot



Outdoor Spaces

The house includes a ground-floor entrance courtyard with outdoor seating, as well as a first-floor balcony. What's more, it is set back from the street behind another property, giving added privacy.



The Neighbourhood

Gunter Grove is an attractive street lined with a mix of semi-detached and terrace houses with stucco bases and dressings. From here, the restaurants and shops of the Fulham Road are close, as well as Fulham Broadway underground station. In addition, Crenmore Gardens and the River Thames are within easy reach.

Gunter Grove, SW10

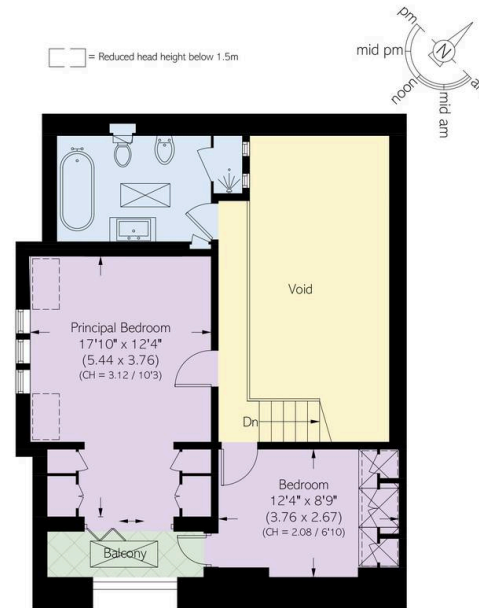
Approximate area
109.8 sq m / 1182 sq ft

Including limited use area
(5.2 sq m / 56 sq ft)

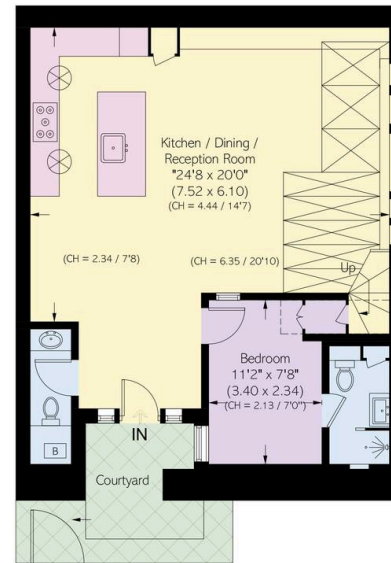
Approximate external area
12.1 sq m / 130 sq ft

**RUSSELL
SIMPSON**

This plan is for layout guidance only.
Not drawn to scale unless stated. Whilst
every care is taken in the preparation of this
plan, please check all dimensions, shapes,
and compass bearings before making any
decisions reliant upon them.



First Floor



Ground Floor

**RUSSELL
SIMPSON**

Contact Us

+44 (0) 20 7225 0277

151A Sydney Street
London
SW3 6NT

chelsea@russellsimpson.co.uk

In accordance with the Property Mis-Description Act 1991, the following details have been prepared in good faith, and are not intended to constitute part of an offer or contract. Any information contained herein (whether in the text, plans or photographs) is given in good faith but should not be relied upon as being a statement of representation of fact. Nothing in these Particulars shall be deemed to be a statement that the property is in good condition or otherwise nor that any services or facilities are in good working order. Any measurements of distances referred to herein are approximate only. October 2021