

RUSSELL SIMPSON

Spectacular three-level penthouse in
the heart of Mayfair

GREEN STREET
MAYFAIR W1K

Green Street

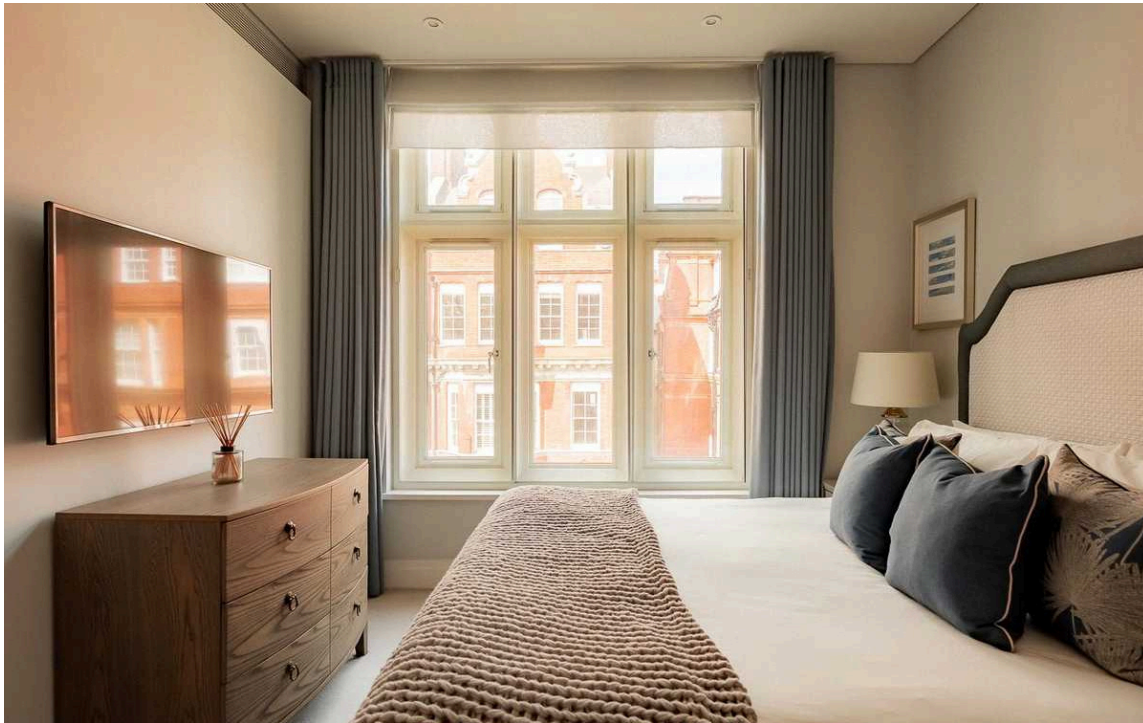
£4,250 P/W

BEDROOMS 2	INTERNAL 1,661 <small>SQ FT</small>	OUTDOOR 154 <small>SQ FT</small>	FURNISHED STATUS Furnished
BATHROOMS 2	154 <small>SQM</small>	EPC C	COUNCIL TAX Westminster City, H



The Property

An exceptional three-level penthouse apartment with lift access and porter service.



The Bedrooms

Entering the flat on the third floor, you are welcomed into a well-proportioned entrance hall. This level features two generously sized bedrooms, both benefiting from high ceilings and filled with natural light. The principal bedroom includes an en-suite bathroom finished with elegant marble surfaces and contemporary fittings. The second bedroom also enjoys an en-suite bathroom, similarly appointed with marble finishes and modern fixtures. Both bathrooms feature sleek wall-mounted fittings and sophisticated design.



Open-Plan Kitchen

Ascending to the fourth floor, the layout opens to reveal a beautifully designed open-plan kitchen and dining area. The kitchen features contemporary fitted units with integrated appliances and a central island, creating an ideal space for both casual dining and entertaining.





The Reception Room

This level flows through to an impressive reception room with floor-to-ceiling windows that fill the space with light. French doors open directly onto a private balcony, extending the living space outdoors. A convenient cloakroom completes this level.



The Dining Room

The fifth floor houses a spectacular dining room with lofty proportions and exceptional natural light from large windows. This elegant space flows seamlessly onto a substantial private terrace, perfect for outdoor relaxation. An additional cloakroom serves this upper level. Throughout the apartment, wooden floors and contemporary finishes create a refined and sophisticated interior, while the generous ceiling heights add to the sense of scale and grandeur.

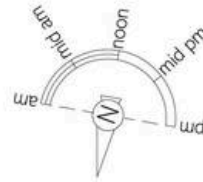
Outdoor Spaces

The property includes two private outdoor spaces: a balcony accessible from the principal bedroom on the third floor, a balcony off the main reception room on the fourth floor, and a substantial terrace on the fifth floor providing elevated views across the surrounding area.



The Neighbourhood

Green Street is an attractive address in the heart of Mayfair, moments away from the luxury boutiques of Bond Street and the open spaces of Green Park. The location offers exceptional access to Mayfair's renowned restaurants, private members' clubs, and cultural attractions. Bond Street and Green Park Underground stations are within easy reach, providing excellent transport connections across London. The area is renowned for its upmarket shopping, fine dining establishments, and proximity to the artistic treasures of the Royal Academy and other prestigious galleries.



Green Street, W1

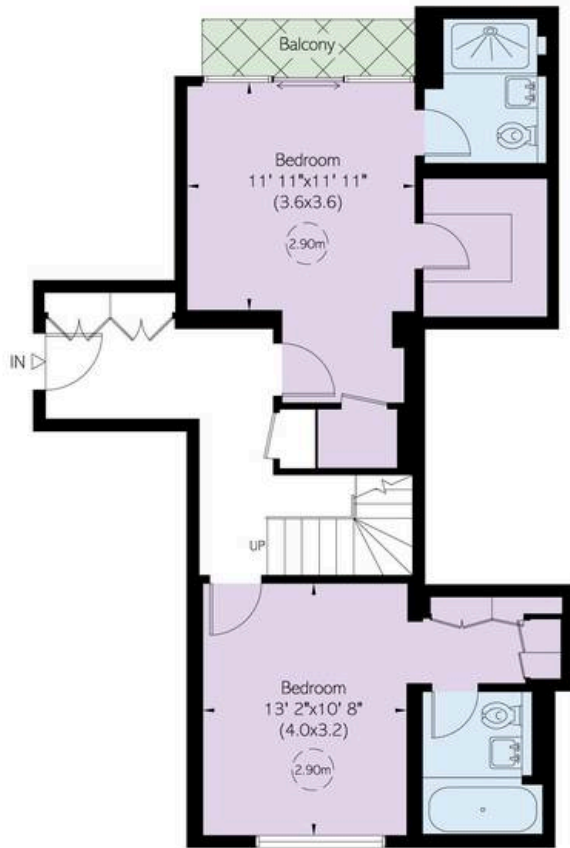
**RUSSELL
SIMPSON**

Approximate Internal Area
1,661 sq ft/ 154 sq m

Including limited use area
28 sq ft/ 3 sq m

Outside Area
155 sq ft/ 14 sq m

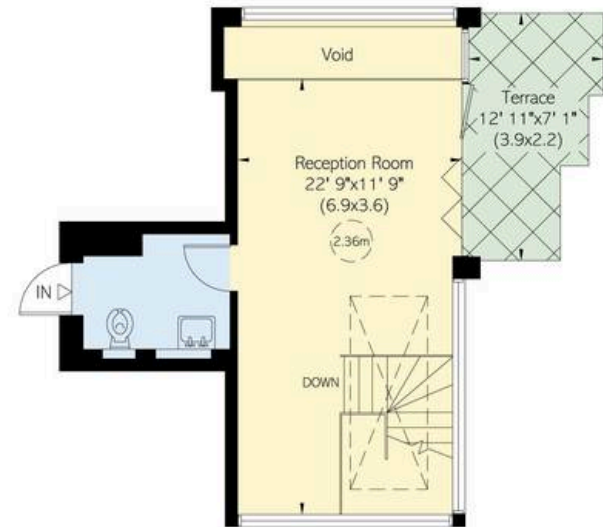
This plan is for layout guidance only. Not drawn to scale unless stated. Windows and door openings are approximate. Whilst every care is taken in the preparation of this plan, please check all dimensions, shapes, and compass bearings before making any decisions reliant upon them.



Third Floor



Fourth Floor



Fifth Floor

**RUSSELL
SIMPSON**

Contact Us

+44 (0) 203 815 9144

mayfair@russellsimpson.co.uk