



RUSSELL SIMPSON

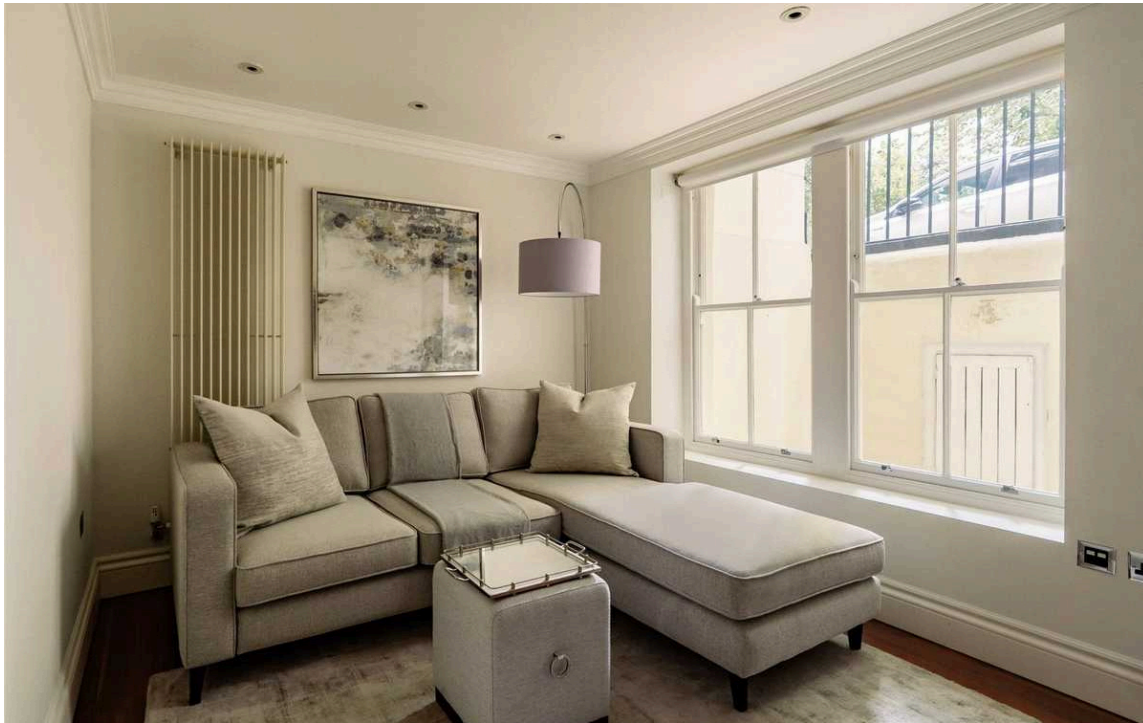
Elegant one-bedroom apartment in
prestigious Kensington Garden
Square

GARDEN HOUSE
EAST NOTTING HILL & BAYSWATER W2

Garden House

£710 P/W

<div>BEDROOMS</div> <div>1-1</div>	<div>INTERNAL</div> <div>390 <small>SQ FT</small></div> <div>36 <small>SQM</small></div>	<div>OUTDOOR</div> <div>—</div>	<div>FURNISHED STATUS</div> <div>Furnished</div>
<div>BATHROOMS</div> <div>1-1</div>		<div>EPC</div> <div>C</div>	<div>COUNCIL TAX</div> <div>Westminster City, D</div>



The Property

The bright reception room is exceptionally well-proportioned, featuring light-filled interiors enhanced by large windows that create a delightful sense of space. This elegant room flows through to a fully fitted bespoke kitchen, complete with Miele appliances and sleek dark wood cabinetry with a smooth white countertop.

The substantial bedroom is filled with light from generous windows and features built-in custom wardrobes that add to the sense of space and functionality. Beyond is an exquisite bathroom, beautifully appointed with polished marble surfaces, contemporary fixtures, and sophisticated cream-coloured tiles that create a refined atmosphere. The sophisticated interiors have been decorated in a restrained contemporary style whilst retaining the building's original Grade II listed features.

The property includes access to the stunning communal Kensington Garden Square gardens, one of London's few remaining traditional garden squares with mature trees and well-maintained lawns.



img 1

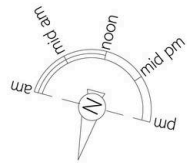
Living Room

img 2

Dining

The Neighbourhood

Kensington Garden Square is a quiet residential address within the upmarket area of W2. The building offers exceptional amenities, including 24-hour security, lift service, and unique private access to the garden square. Moments away are the sophisticated boutiques and restaurants of Westbourne Grove and Notting Hill, whilst the open spaces of Hyde Park are within easy reach. Transport connections are superb, with Bayswater and Queensway stations just a few moments' walk away.

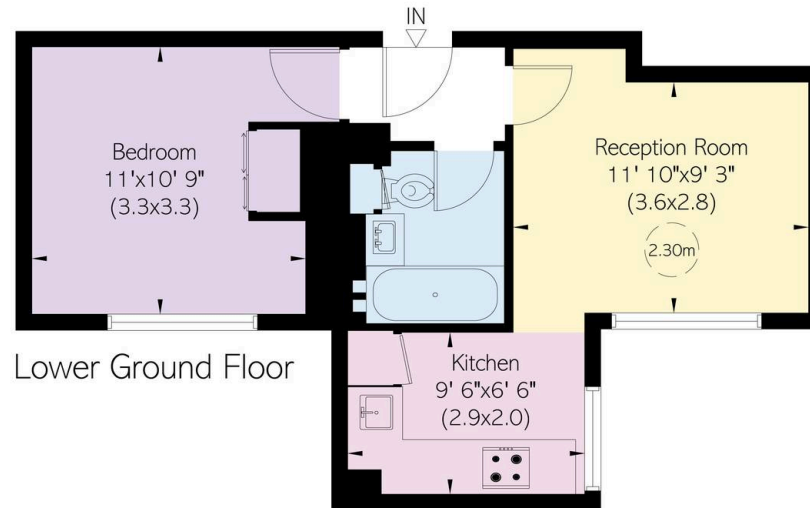


Garden House, Kensington Garden Square, W2

**RUSSELL
SIMPSON**

Approximate Internal Area
390 sq ft/ 36 sq m

This plan is for layout guidance only. Not drawn to scale unless stated. Windows and door openings are approximate. Whilst every care is taken in the preparation of this plan, please check all dimensions, shapes, and compass bearings before making any decisions reliant upon them.



**RUSSELL
SIMPSON**

Contact Us

+44 (0) 20 3761 9691

13 Kensington Square
London
W8 5HD

kensington@russellsimpson.co.uk