



RUSSELL SIMPSON

Attractive two-bedroom flat to rent
in a popular building with
communal garden access

EUROPA HOUSE
MAIDA VALE W9

Europa House

£2,850 _{P/W}

<div>BEDROOMS</div> <div>2</div>	<div>INTERNAL</div> <div>909 _{SQ FT}</div> <div>84 _{SQM}</div>	<div>OUTDOOR</div> <div>5 _{SQ FT}</div>	<div>FURNISHED STATUS</div> <div>Furnished</div>
<div>BATHROOMS</div> <div>2</div>		<div>EPC</div> <div>C</div>	<div>COUNCIL TAX</div> <div>Westminster City, G</div>

The Property

Bright flat with beautiful views on a street of stucco townhouses near Maida Vale station

Stepping into the flat on the third floor, the front hall leads into a reception room. As well as space for separate dining and seating areas, this room includes double French doors opening onto a Juliet balcony with attractive views across the communal garden.





Indoor Spaces

The property has been tastefully decorated in a calm contemporary style with wooden floors throughout. It is presented in very good condition.





The Bedrooms

The flat also contains a pair of bedrooms. One bedroom has an ensuite bathroom, the other has a bathroom opposite. Both rooms have inbuilt wardrobe space and both bathrooms contain baths.





Outdoor Spaces

The flat is part of an impressive apartment building in the neoclassical style, which offers both porter and lift, along with high speed wireless broadband, 24 hour CCTV, high quality linen, welcome provisions on arrival and a housekeeping service. All utilities are included.

In addition, residents have access to a spacious shared garden with lawns, gravel paths and a playground.





The Neighbourhood

Europa House is an end-of-terrace building on an attractive residential street lined with white stucco townhouses. From here, Maida Vale station is close, while the Paddington Recreation Ground is also nearby. Furthermore, the Regent's Canal is a short walk away, with its popular towpath for running and cycling.

Please note prices are subject to VAT. This drops from 20% to 4% after 28 nights.

Europa House,
Randolph Avenue, W9

**RUSSELL
SIMPSON**

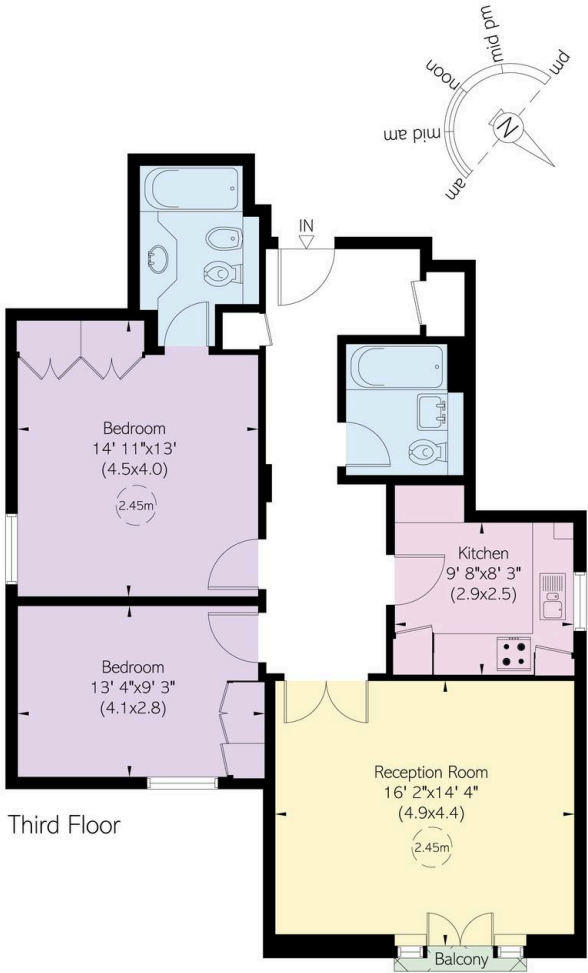
Approximate Internal Area

909 sq ft/ 84 sq m

Outside Area

5 sq ft/ 0.4 sq m

This plan is for layout guidance only. Not drawn to scale unless stated. Windows and door openings are approximate. Whilst every care is taken in the preparation of this plan, please check all dimensions, shapes, and compass bearings before making any decisions reliant upon them.



**RUSSELL
SIMPSON**

Contact Us

+44 (0) 20 3761 9691

13 Kensington Square
London
W8 5HD

kensington@russellsimpson.co.uk