



RUSSELL SIMPSON

Superb house with spacious interiors
in immaculate condition to rent near
the King's Road

DRAYCOTT AVENUE
CHELSEA SW3

Draycott Avenue

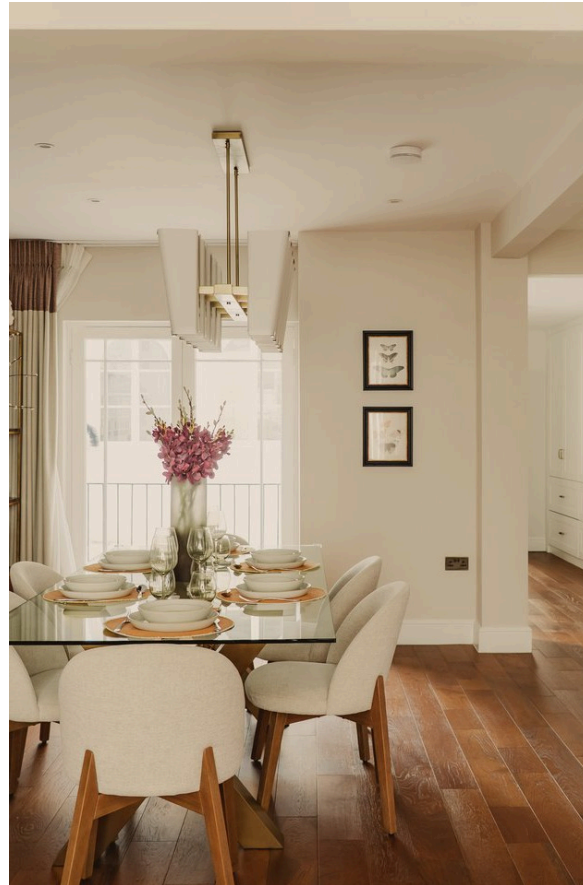
£3,345 _{P/W}

BEDROOMS 5	INTERNAL 2,241 _{SQ FT} 208 _{SQM}	OUTDOOR 359 _{SQ FT}	FURNISHED STATUS Furnished
BATHROOMS 3		EPC E	COUNCIL TAX RBKC, H

The Property

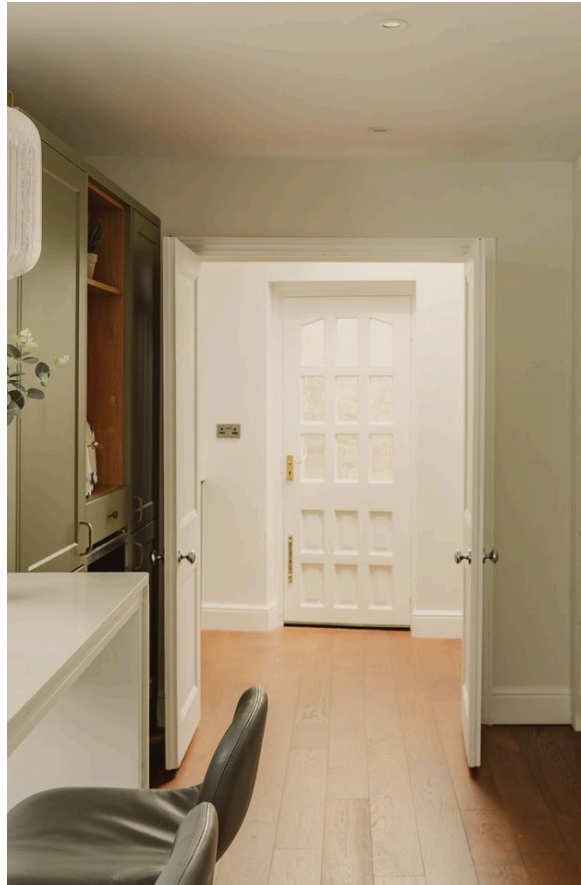
Beautifully designed and decorated family home on a convenient street in the heart of Chelsea

Stepping into the house on the ground floor, the front hall flows through to a spacious reception room. As well as space for separate dining and seating areas, high ceilings and a double aspect fill this space with light.



The Kitchen

The reception room leads through to a fitted kitchen, with a convenient breakfast bar and storage space in between.

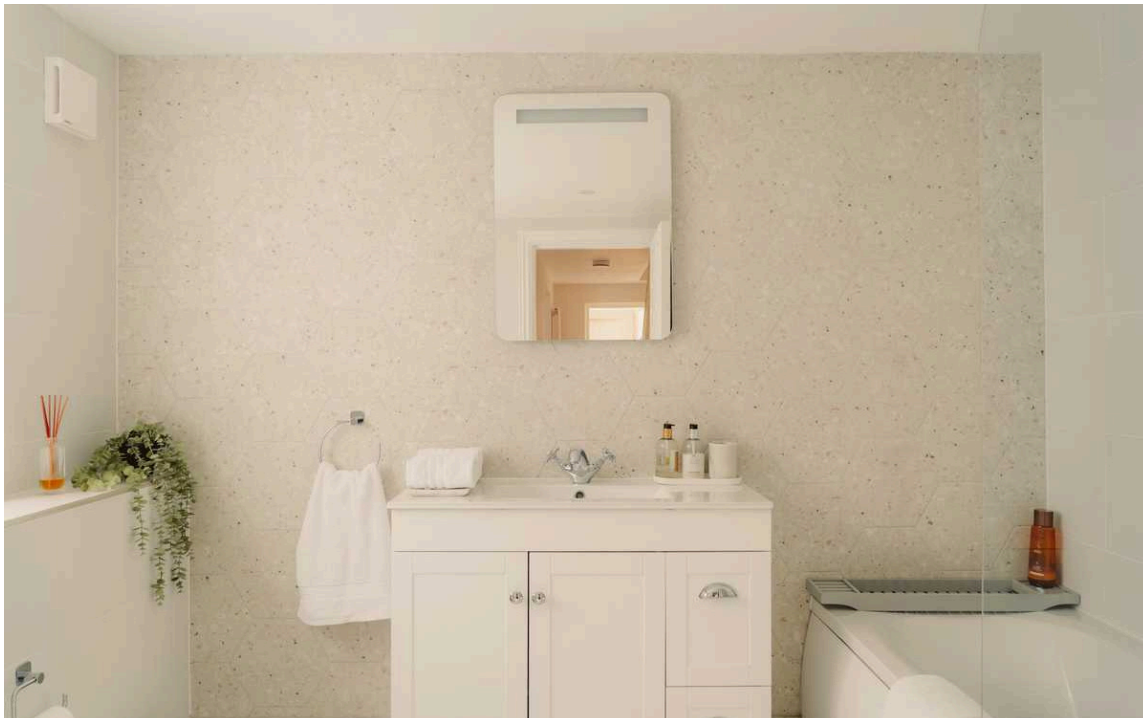




The Bedrooms

The ground floor consists of two bedrooms, sharing a bathroom with a bath. One bedroom has double French doors opening onto a rear patio, while the other bedroom has access to a front patio.

The first floor features two more bedrooms, sharing another bathroom.





The Principal Bedroom

The second floor is entirely occupied by the principal bedroom suite, featuring bedroom, bathroom, considerable wardrobe space and a French door opening onto the rear terrace.



The Design

The property has been decorated in a sophisticated style combining classical and contemporary details. It is presented in immaculate condition, with a thoughtful design maximising the sense of light and space throughout.





The Neighbourhood

The property includes a rear balcony with rooftop views and enough space for outdoor seating. There is also a rear patio and a front patio with outdoor storage.

Draycott Avenue is located in the heart of Chelsea, between the King's Road and the Fulham Road. The neighbourhood is well-supplied with restaurants and shops, while Sloane Square and South Kensington underground stations are both within walking distance. Pavilion Road is also close, with its village-like collection of independent boutiques and artisanal food shops.

Draycott Avenue, SW₃

**RUSSELL
SIMPSON**

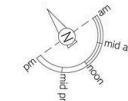
Approximate Internal Area
2,245 sq ft / 208 sq m

**Including limited use area
and vaults**
990 sq ft / 91 sq m

Outside Area
360 sq ft / 33 sq m

This plan is for layout guidance only. Not drawn to scale unless stated. Windows and door openings are approximate. Whilst every care is taken in the preparation of this plan, please check all dimensions, shapes, and compare bearings before making any decisions related upon them.

Reduced head height below 1.5m



**RUSSELL
SIMPSON**

Contact Us

+44 (0) 20 7225 0277

151A Sydney Street
London
SW3 6NT

chelsea@russellsimpson.co.uk

In accordance with the Property Mis-Description Act 1991, the following details have been prepared in good faith, and are not intended to constitute part of an offer or contract. Any information contained herein (whether in the text, plans or photographs) is given in good faith but should not be relied upon as being a statement of representation of fact. Nothing in these Particulars shall be deemed to be a statement that the property is in good condition or otherwise nor that any services or facilities are in good working order. Any measurements of distances referred to herein are approximate only. October 2021