



RUSSELL SIMPSON

Sublime three-bedroom flat to rent
moments away from Kensington
gardens

DE VERE GARDENS
KENSINGTON W8

De Vere Gardens

£3,750 P/W

BEDROOMS 3	INTERNAL 1,850 <small>SQ FT</small>	OUTDOOR —	FURNISHED STATUS Furnished
BATHROOMS 3	171 <small>SQM</small>	EPC D	COUNCIL TAX RBKC, H

The Property

Spacious flat with sophisticated interiors and exceptionally high ceilings on a sought-after street

The flat has been recently refurbished, with wooden floors throughout and a Control 4 system for the blinds, lighting and surround sound. The sophisticated interiors combine classical and contemporary details and are presented in excellent condition.





Indoor Spaces

Entering the flat on the ground floor, the front hall leads through to a magnificent reception room. As well as an open-plan kitchen with a breakfast bar, this room offers separate dining and seating areas. In addition, a bay window with panelled shutters, and high ceilings with an intricate cornice, give this space a sense of elegance and grandeur.



The Bedrooms

The property also contains three bedrooms. The principal shares bedroom the high ceilings and grand proportions of the reception room. All three offer ensuite bathrooms and inbuilt storage space, while a guest WC completes this space.



The Neighbourhood

The building includes a daytime porter.

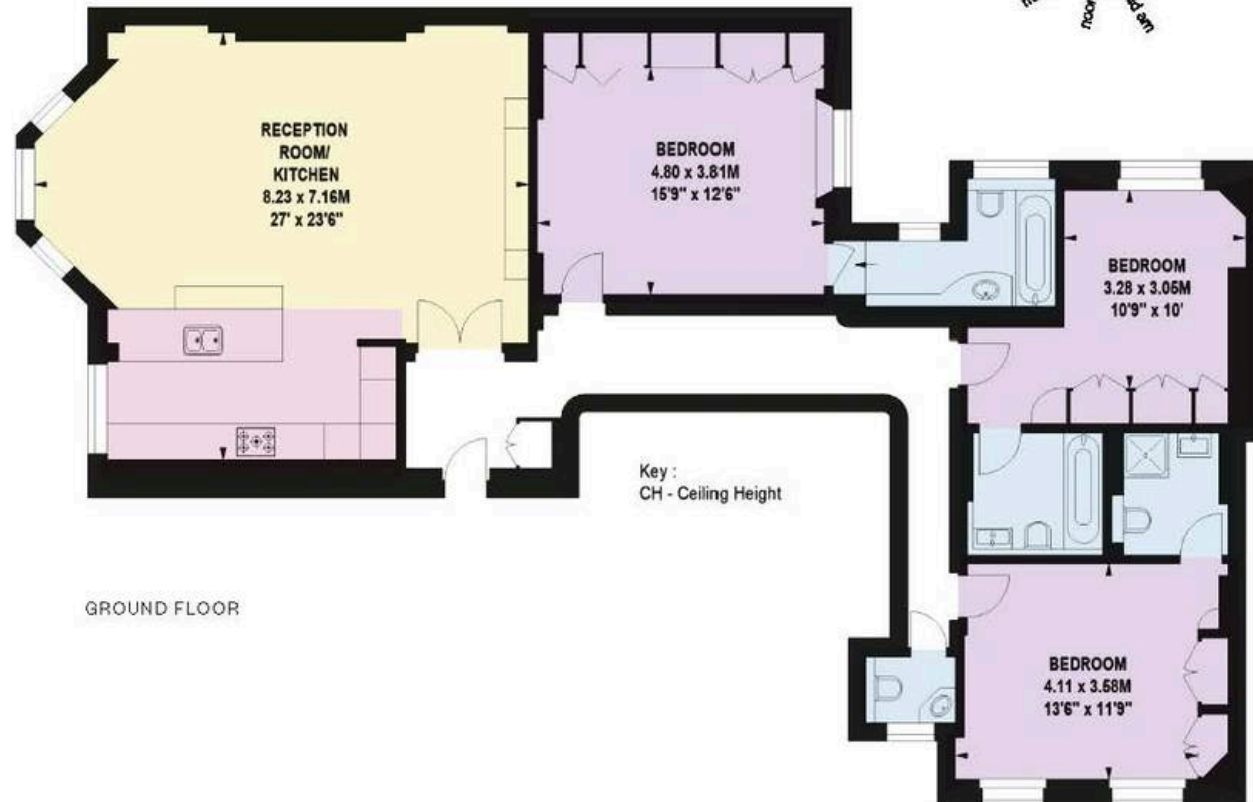
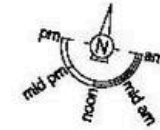
De Vere Gardens is one of the most prestigious addresses in London. The street runs south from Kensington Gardens, lined in terraces of tall townhouses with stucco dressings and classical decorative details. From here, the restaurants, shops and underground station of Kensington High Street are all close, while Gloucester Road underground station is also nearby. In addition, the world class-cultural institutions of South Kensington are all within walking distance.

Fordham Court,
DeVere Gardens, W8

Approx Gross Internal Area
1,850 sq ft / 171.87 sq m

**RUSSELL
SIMPSON**

This plan is for layout guidance only. Not drawn to scale unless stated. Windows and door openings are approximate. Whilst every care is taken in the preparation of this plan, please check all dimensions, shapes, and compass bearings before making any decisions reliant upon them.



GROUND FLOOR

**RUSSELL
SIMPSON**

Contact Us

+44 (0) 20 3761 9691

13 Kensington Square
London
W8 5HD

kensington@russellsimpson.co.uk