



RUSSELL SIMPSON

Refined three-bedroom Victorian
flat with garden square access

CORNWALL GARDENS
SOUTH KENSINGTON SW7

Cornwall Gardens

Let

BEDROOMS 3	INTERNAL 1,105 SQ FT	OUTDOOR 89 SQ FT	FURNISHED STATUS Furnished
BATHROOMS 2	102 SQM	EPC D	COUNCIL TAX RBKC, G

The Property

A beautifully proportioned three-bedroom flat spanning two floors of this distinguished Victorian building.

Entering the flat on the ground floor, a refined entrance hall with wooden floors provides access to a cloakroom and guest washroom on this level. This generous south-facing reception room is filled with light through tall windows overlooking the peaceful Cornwall Mews South, creating an elegant setting for both relaxation and dining. The kitchen, thoughtfully positioned off the main reception area, features fitted units and provides practical space for daily living.





The Bedrooms

A staircase leads down to the lower ground floor, where all three well-proportioned double bedrooms are located. The master bedroom, positioned at the front of the property, features an ensuite bathroom with modern fittings. The rear bedroom opens directly onto a private patio through French doors, while all three bedrooms on this level share access to a graceful family bathroom fitted with contemporary fixtures.

Throughout the flat, high ceilings create a superb sense of scale, while the wooden floors add warmth and character to the refined interiors.



Outdoor Spaces

The property includes a charming west-facing patio accessible from the rear bedroom, offering a peaceful outdoor retreat. Additionally, residents enjoy access to the communal Cornwall Gardens, providing beautifully maintained green space in the heart of South Kensington.



The Neighbourhood

Cornwall Gardens is an attractive garden square situated in one of London's most sought-after residential areas. The property is moments away from the upmarket shops and restaurants of Gloucester Road, while Gloucester Road underground station (Piccadilly, District and Circle Lines) is within easy walking distance. The expansive green spaces of Hyde Park and Kensington Gardens are nearby, and residents are eligible for RBKO parking permits, adding to the property's practical appeal in this prime central London location.

Cornwall Garden,
SW7

Approx Gross Internal Area

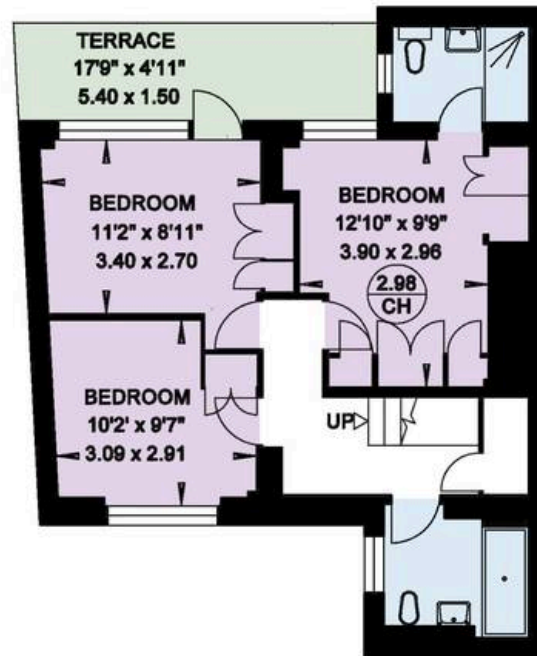
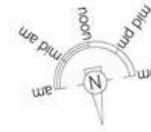
1,105 sq ft / 102.6 sq m

Outside Area

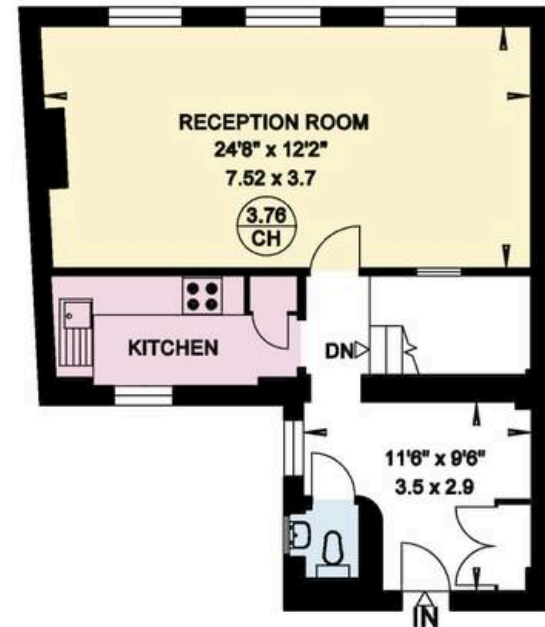
90 sq ft / 8.3 sq m

**RUSSELL
SIMPSON**

This plan is for layout guidance only. Not drawn to scale unless stated. Windows and door openings are approximate. Whilst every care is taken in the preparation of this plan. Please check all dimensions, shapes, and compass bearings before making any decisions reliant upon them.



LOWER GROUND FLOOR



GROUND FLOOR

**RUSSELL
SIMPSON**

Contact Us

+44 (0) 20 7225 0277

151A Sydney Street
London
SW3 6NT

chelsea@russellsimpson.co.uk