



RUSSELL SIMPSON

Recently renovated three bedroom
flat with communal garden access in
South Kensington

CORNWALL GARDENS
SOUTH KENSINGTON SW7

Cornwall Gardens

£1,073 _{P/W}

BEDROOMS 3	INTERNAL 871 _{SQ FT} 80 _{SQM}	OUTDOOR —	FURNISHED STATUS Unfurnished
BATHROOMS 1		EPC E	COUNCIL TAX RBKC, G

The Property

Bright fourth floor flat with well-proportioned rooms in a handsome period building on Cornwall Gardens, with the convenience of a lift.

Entering the flat, the hallway leads to a generous reception room with high ceilings and a beautiful bay window that floods the space with natural light. This principal living area offers ample space for both seating and entertaining, with ceiling heights reaching an impressive 3.20 metres. The separate kitchen features fitted units and ample workspace.





Indoor Spaces

The flat offers three well-sized bedrooms. The principal bedroom includes built-in storage, while the other two bedrooms are equally well-appointed. One family bathroom and a separate guest WC complete the main accommodation. Positioned at the end of the corridor is a utility room which includes a separate dryer. There is also a large storage space, adding to the practicality of this home.

Throughout the flat, the thoughtful layout creates a sense of openness and light. The property is presented in good condition with tasteful décor that complements the period features.





The Neighbourhood

Residents of Cornwall Gardens enjoy access to the beautiful communal garden, offering a tranquil green space in the heart of South Kensington—a rare amenity in this central London location.

Cornwall Gardens is a prestigious address in South Kensington, lined with impressive white stucco-fronted Victorian buildings. The street was developed in the mid-19th century and has maintained its elegant character.

From here, Gloucester Road underground station is within easy walking distance, providing excellent transport links across London. The world-class museums of Exhibition Road, including the Victoria & Albert Museum and Natural History Museum, are nearby. Furthermore, the diverse restaurants and boutiques of South Kensington are moments away, while the open spaces of Hyde Park and Kensington Gardens are also within reach.

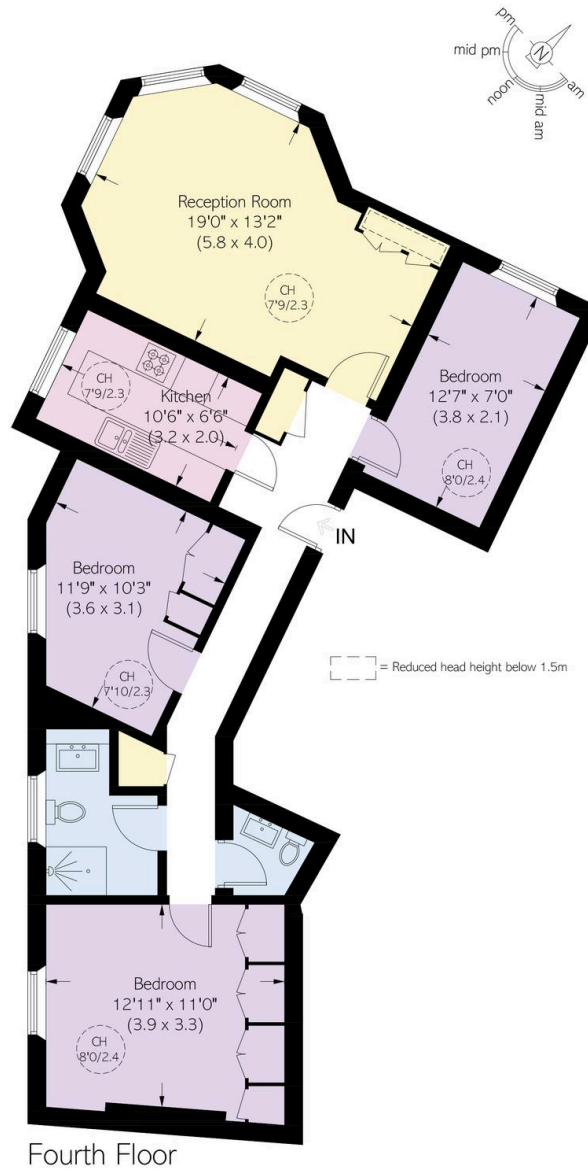
Cornwall Gardens, SW7

Approximate area
871 sq ft / 80.9 sq m

Including limited use area
(2.0 sq m / 21 sq ft)

**RUSSELL
SIMPSON**

This plan is for layout guidance only.
Not drawn to scale unless stated. Windows
and door openings are approximate. Whilst
every care is taken in the preparation of this
plan, please check all dimensions, shapes,
and compass bearings before making any
decisions reliant upon them.



**RUSSELL
SIMPSON**

Contact Us

+44 (0) 20 7225 0277

151A Sydney Street
London
SW3 6NT

chelsea@russellsimpson.co.uk

In accordance with the Property Mis-Description Act 1991, the following details have been prepared in good faith, and are not intended to constitute part of an offer or contract. Any information contained herein (whether in the text, plans or photographs) is given in good faith but should not be relied upon as being a statement of representation of fact. Nothing in these Particulars shall be deemed to be a statement that the property is in good condition or otherwise nor that any services or facilities are in good working order. Any measurements of distances referred to herein are approximate only. October 2021