



RUSSELL SIMPSON

Newly renovated one-bedroom flat
with spacious interiors moments
away from Portobello Road

COLVILLE TERRACE
NOTTING HILL W11

Colville Terrace

£775 P/W

BEDROOMS 1-1	INTERNAL 543 <small>SQ FT</small> 50 <small>SQM</small>	OUTDOOR —	FURNISHED STATUS Furnished
BATHROOMS 1-1		EPC C	COUNCIL TAX D



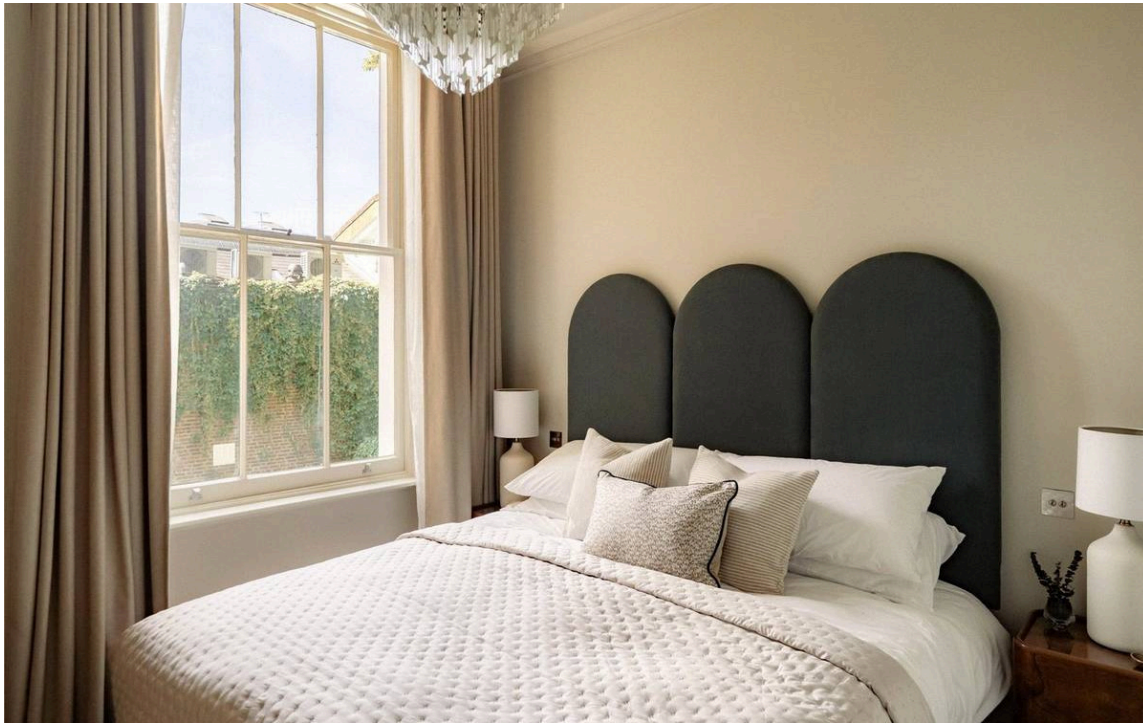
The Property

Beautifully designed apartment in a pastel-painted townhouse in the heart of Notting Hill

Indoor Spaces

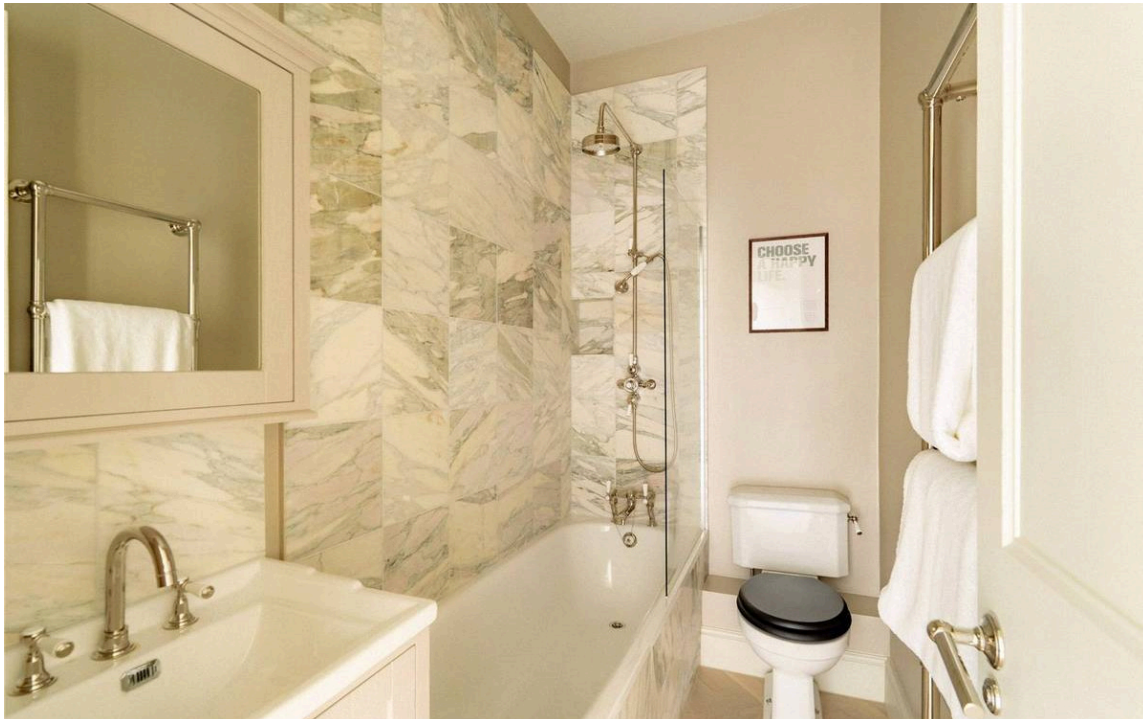
Entering the flat on the raised ground floor, the front hall leads through to a well-proportioned reception room. This includes space for separate dining and seating areas, as well as an open-plan kitchen with marble worktops. Wooden floors, high ceilings and a full-length bay window add to the sense of brightness and space.





The Bedroom

The flat also contains a bedroom with wardrobe space and a bathroom with a bath. There is additional storage in the hallway.





The Design

This newly renovated property is decorated in a graceful style, with moulded cornices and a fireplace surround adding to the sense of elegance. A muted colour scheme creates a calm atmosphere, while underfloor heating brings comfort and convenience.

The Neighbourhood

Coville Terrace is an attractive street lined with stucco townhouses painted white or in pastel colours. Nearby Colville Square contains a public garden square with a small play area.

Portobello Road is a short walk away, along with many of the neighbourhood's celebrated shops, restaurants and bars. In addition, Ladbroke Grove and Notting Hill Gate underground stations are both within walking distance.

Colville Terrace,
W11

Approx Gross Internal Area
543 sq ft / 50.5 sq m

**RUSSELL
SIMPSON**

This plan is for layout guidance only. Not drawn to scale unless stated. Windows and door openings are approximate. Whilst every care is taken in the preparation of this plan, please check all dimensions, shapes, and compass bearings before making any decisions reliant upon them.



RAISED GROUND FLOOR

**RUSSELL
SIMPSON**

Contact Us

+44 (0) 20 3761 9691

13 Kensington Square
London
W8 5HD

kensington@russellsimpson.co.uk