

RUSSELL SIMPSON

Superb three-bedroom flat with
access to a swimming pool and gym,
in close proximity to King's Road

CHEYNE TERRACE
CHELSEA SW3

Cheyne Terrace

£7,000 _{P/W}

BEDROOMS 3	INTERNAL 3,716 _{SQ FT} 345 _{SQM}	OUTDOOR 117 _{SQ FT}	FURNISHED STATUS Unfurnished
BATHROOMS 3		EPC B	COUNCIL TAX RBKC, H

The Property

A duplex flat in excellent condition with underground parking, situated in a modern building in the heart of Chelsea.

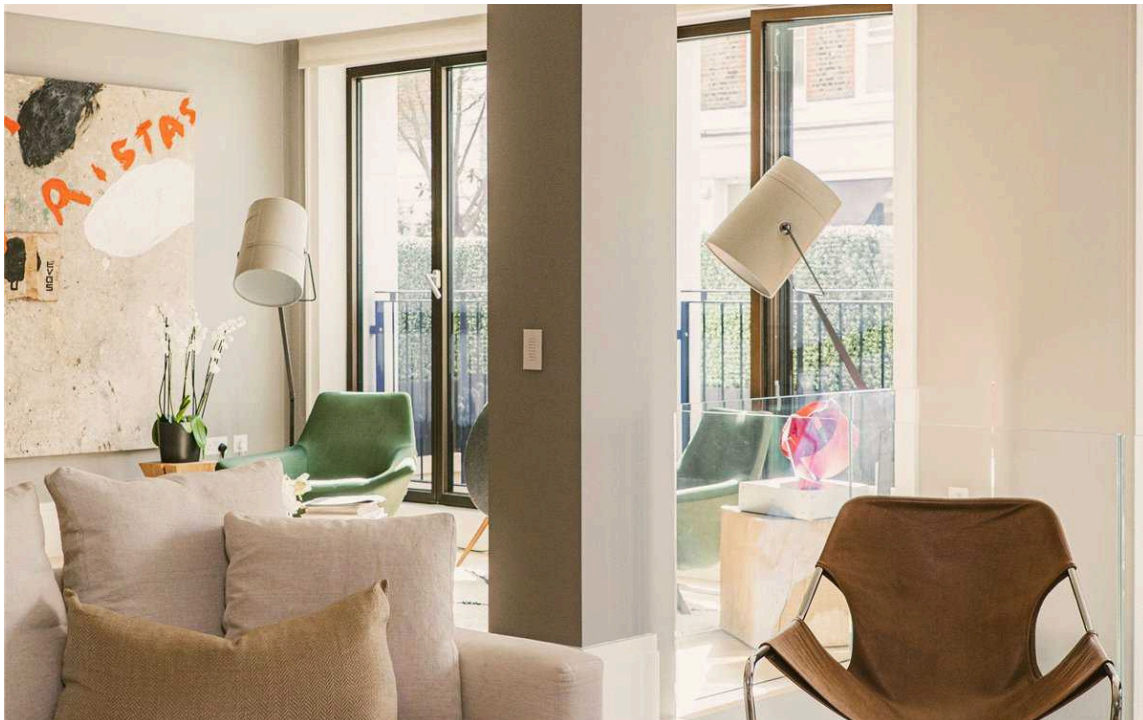




Entertaining Spaces

Stepping into the flat on the ground floor, the entrance hall leads into a well-proportioned drawing room. As well as space for separate dining and seating areas, this room is filled with light from four west-facing double French doors. Furthermore, an internal balcony spreads the daylight down to the floor below.

Sliding doors flow through to a kitchen with a central island breakfast bar. Opposite is a utility room, with a guest WC next door and additional storage space in the hall.





The Bedrooms

The lower ground floor consists of three bedrooms. The principal bedroom has a dressing room and a generous ensuite bathroom with a bath. The other two bedrooms are also ensuite, one with its own dressing room. Furthermore, this floor features a media room and an extra bathroom.



The Design

The flat has been decorated in a sophisticated contemporary style and finished to the highest standard. Its spacious interiors are presented in excellent condition with air conditioning throughout.





The Neighbourhood

Cheyne Terrace is a sought-after modern building completed in 2014. It offers a 24-hour concierge, secure underground parking, and additional storage. Additionally, residents have access to a swimming pool, a gym, and a treatment room.

The building is positioned midway between the King's Road and the Thames Embankment. From here, the many restaurants and shops of Chelsea are within easy reach, as well as Sloane Square underground station. Furthermore, the private Chelsea Physic Garden is a short walk away, as well as the open spaces of Battersea Park.



Cheyne Terrace, Chelsea Manor Street, SW3

**RUSSELL
SIMPSON**

Approximate Internal Area
3,716 sq ft/ 345 sq m

Outside Area
117 sq ft/ 11 sq m

This plan is for layout guidance only. Not drawn to scale unless stated. Windows and door openings are approximate. Whilst every care is taken in the preparation of this plan, please check all dimensions, shapes, and compass bearings before making any decisions reliant upon them.



Lower Ground Floor



Ground Floor

**RUSSELL
SIMPSON**

Contact Us

+44 (0) 20 7225 0277

151A Sydney Street
London
SW3 6NT

chelsea@russellsimpson.co.uk

In accordance with the Property Mis-Description Act 1991, the following details have been prepared in good faith, and are not intended to constitute part of an offer or contract. Any information contained herein (whether in the text, plans or photographs) is given in good faith but should not be relied upon as being a statement of representation of fact. Nothing in these Particulars shall be deemed to be a statement that the property is in good condition or otherwise nor that any services or facilities are in good working order. Any measurements of distances referred to herein are approximate only. October 2021