

RUSSELL SIMPSON

Tasteful flat to rent moments away
from trendy Golborne Road

CHESTERTON ROAD
NORTH KENSINGTON W10

Chesterton Road

£550 P/W

<div>BEDROOMS</div> <div>1</div>	<div>INTERNAL</div> <div>510 <small>SQ FT</small></div> <div>47 <small>SQM</small></div>	<div>OUTDOOR</div> <div>63 <small>SQ FT</small></div>	<div>FURNISHED STATUS</div> <div>Furnished</div>
<div>BATHROOMS</div> <div>1</div>		<div>EPC</div> <div>E</div>	<div>COUNCIL TAX</div> <div>RBKC, D</div>

The Property

One-bedroom flat with terrace in a popular neighbourhood close to Ladbroke Grove station

This second-floor property is centred on a well-proportioned reception room with a south-east facing sash window. On one side is a fitted kitchen, on the other side a bedroom with enough space for a double bed.





Indoor Spaces

The property includes a terrace with wooden decking and enough space for outdoor eating.

The property also contains a bathroom and a utility cupboard. It is decorated in a contemporary style, with bright tiling in the bathroom and bare brick on the stairs leading up from the first-floor entrance. It was recently renovated and presented in good condition.

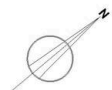
N.B. A Director of Russell Simpson has an interest in this property.





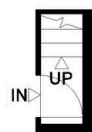
The Neighbourhood

Chesterton Road is a tree-lined street leading towards the intersection of Portobello Road and Golborne Road. This is a popular area with a range of independent restaurants, cafes and shops. From here, Ladbroke Grove underground station is a short walk away, while the Grand Union Canal, with its picturesque towpath for walking and running, is also nearby

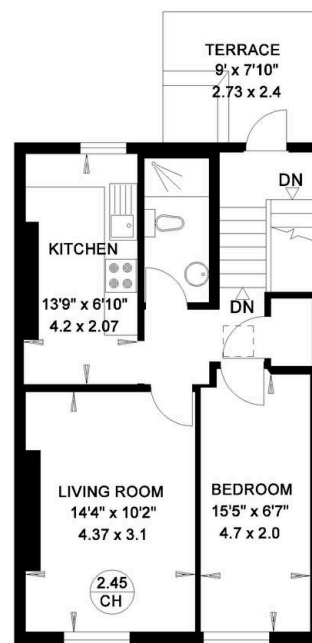


SECOND FLOOR FLAT
CHESTERTON ROAD
LONDON W10

Gross Internal Area = 47 sq. metres
510 sq. feet



FIRST FLOOR



SECOND FLOOR

**RUSSELL
SIMPSON**

Contact Us

+44 (0) 20 3761 9691

13 Kensington Square
London
W8 5HD

kensington@russellsimpson.co.uk