



RUSSELL SIMPSON

Sublime Notting Hill townhouse
with off-street parking and
swimming pool to rent

CHEPSTOW VILLAS
NOTTING HILL W11

Chepstow Villas

£12,000 P/W

<div>BEDROOMS</div> <div>7</div>	<div>INTERNAL</div> <div>4,431 <small>SQ FT</small></div> <div>411 <small>SQM</small></div>	<div>OUTDOOR</div> <div>3,291 <small>SQ FT</small></div>	<div>FURNISHED STATUS</div> <div>Furnished</div>
<div>BATHROOMS</div> <div>5</div>		<div>EPC</div> <div>D</div>	<div>COUNCIL TAX</div> <div>RBKC, H</div>





The Property

Beautiful seven bedroom white stucco villa close to Westbourne Grove with generous garden and immaculate interiors

img 1

Living Room

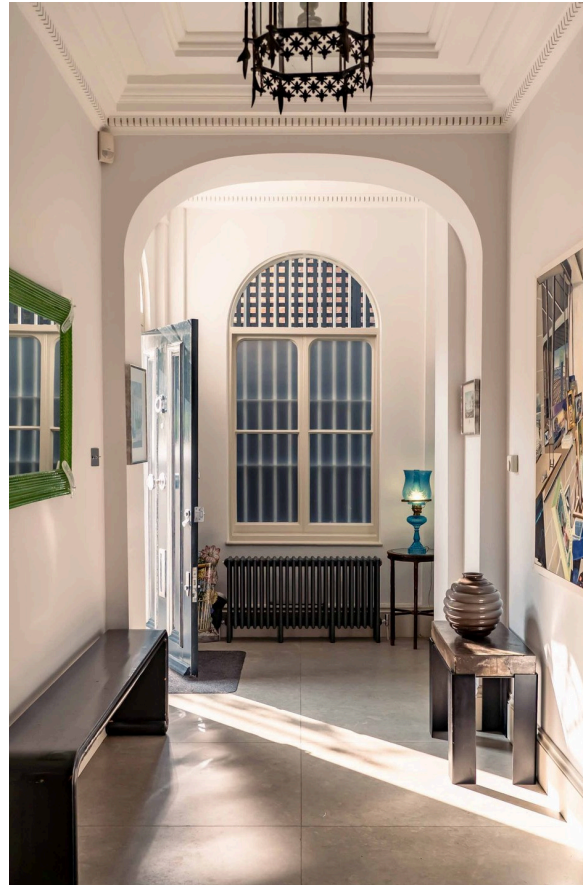
img 2

Enchanting Garden



Indoor Spaces

Stepping into the house on the ground floor, the entrance hall contains a staircase connecting each level of the property. Double doors open onto a dining room with a carved stone fireplace. Meanwhile, on the other side of the house, a family television room connects to a modern kitchen with central island. Both these rooms have double French doors opening out onto the terrace, providing easy access to the garden.



img 1

Dining

img 2

Natural Light



Entertaining Spaces

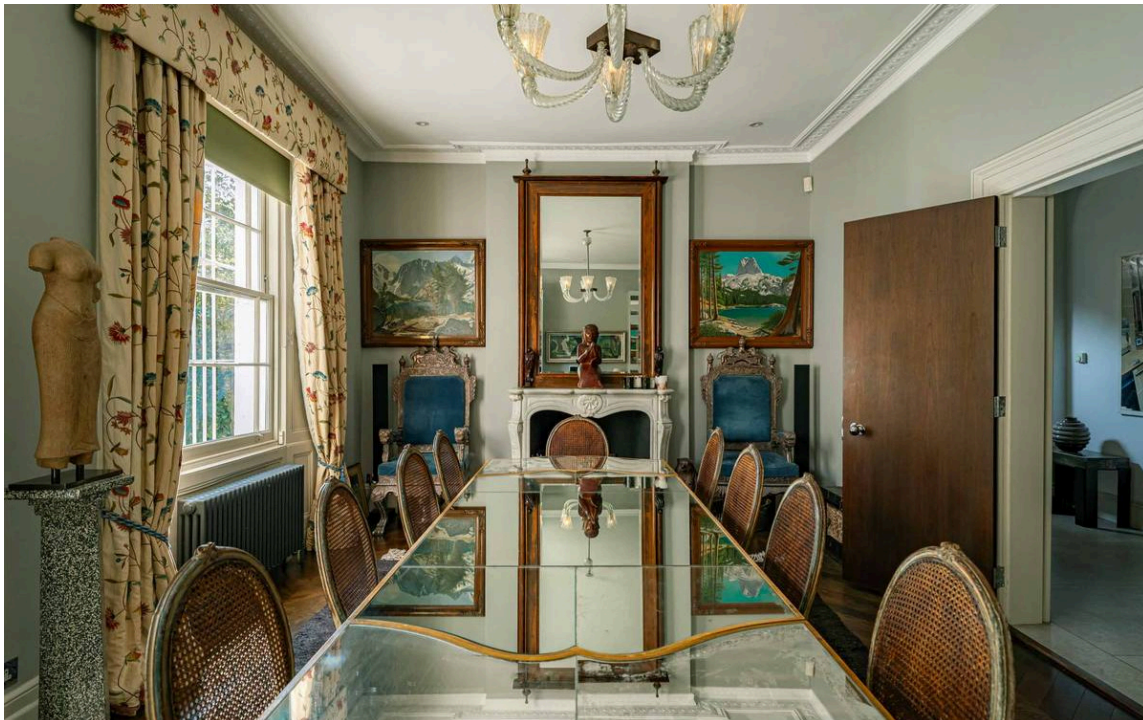
The lower ground floor centres on a generous reception room with three French doors leading onto the patio. This floor also includes a pair of bedrooms, one of them ensuite, and an extra bathroom. Finally, there is a well-proportioned utility room, a wine cellar and considerable storage space.

img 1

Living Room

img 2

Dining Room





The Bedrooms

The first floor is made of up a generous bedroom suite, with bedroom, bathroom and dressing room. In addition, the front half of this floor contains another reception room with a pair of French doors opening onto a balcony. Furthermore, the second floor offers four well-proportioned bedrooms, one of them ensuite, the rest sharing a bathroom.

img 1

Principal Bedroom



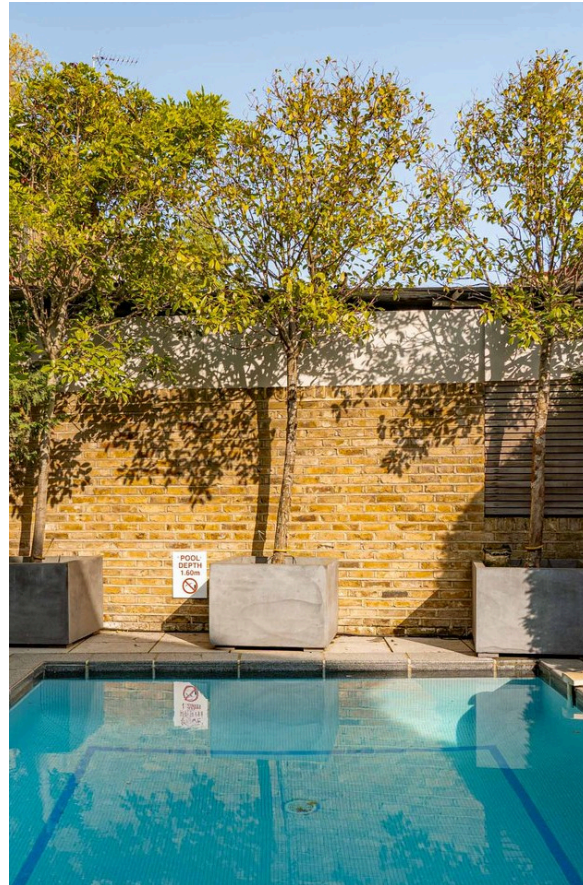
Outdoor Spaces

The property includes an unusually large rear garden with a swimming pool. In addition, there is a front garden giving plenty of space for off-street parking. There is also a south-facing balcony at the front of the house.



img 1

Alfresco Dining



img 2

Swimming Pool



The Design

The property is presented in brand new condition. Its immaculate interiors blend contemporary and classical design to create bright, colourful spaces.

The Neighbourhood

Chepstow Villas is a popular street lined with white stucco Victorian villas and terraces. It was laid out in the late 1840s and early 1850s for the growing professional class of lawyers, bankers and merchants. Today it is located in the heart of Notting Hill and the neighbourhood's many restaurants and shops are within easy reach. Nearby Westbourne Grove has a village-like atmosphere, while Notting Hill underground station is also a short walk away.

img 1

External

Chepstow Villas, W11

Approximate Internal Area

8,491 sq ft / 811 sq m

Excluding outside storage

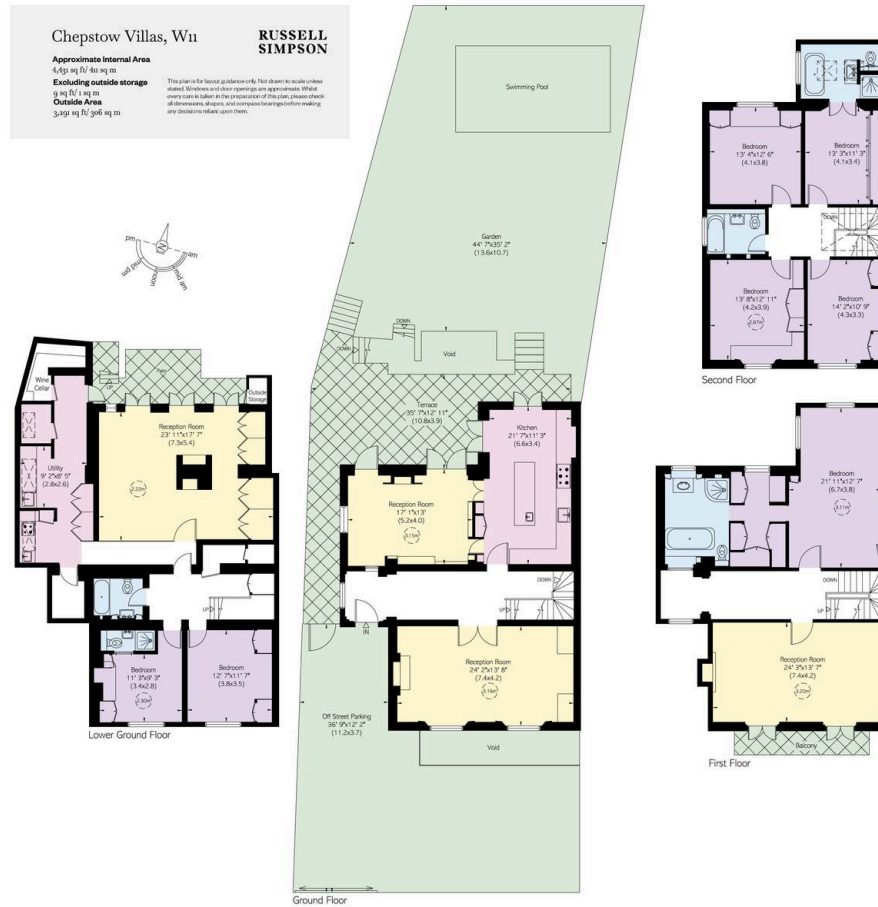
9 sq ft / 1 sq m

Outside Area

3,491 sq ft / 326 sq m

This plan is for layout guidance only. Not drawn to scale unless stated. Windows and door openings are approximate. Whilst every care is taken in the preparation of this plan, please check all dimensions, drawings and compass bearings before making any decisions reliant upon them.

RUSSELL
SIMPSON



**RUSSELL
SIMPSON**

Contact Us

+44 (0) 20 3761 9691

13 Kensington Square
London
W8 5HD

kensington@russellsimpson.co.uk