



RUSSELL SIMPSON

Charming two-bedroom flat with lift
access in Mayfair

BLOOMFIELD COURT
MAYFAIR W1K

Bloomfield Court

£4,995 P/M

<div>BEDROOMS</div> <div>2</div>	<div>INTERNAL</div> <div>931 <small>SQ FT</small></div> <div>86 <small>SQM</small></div>	<div>OUTDOOR</div> <div>—</div>	<div>FURNISHED STATUS</div> <div>Furnished</div>
<div>BATHROOMS</div> <div>2</div>		<div>EPC</div> <div>B</div>	<div>COUNCIL TAX</div> <div>Westminster City</div>

The Property

A well-presented second-floor flat in an elegant red brick building.

Entering the flat, a wrap-around corridor leads to all accommodation. The bright open-plan reception and dining room features large windows overlooking the courtyard, wooden floors throughout and benefits from excellent natural light.

The separate kitchen is fitted with white units, stone countertops and integrated appliances arranged in a practical U-shaped layout.



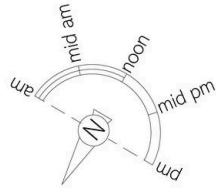
The Bedrooms

The accommodation includes two bedrooms, both with built-in storage. The principal bedroom features an en-suite bathroom, while the second bedroom is served by a separate bathroom with a bath. The flat is presented in very good condition with contemporary fixtures throughout.



The Neighbourhood

Bloomfield Court is situated in a quiet residential setting within Mayfair. The building benefits from lift access and the location offers easy access to the shops and restaurants of Oxford Street, with Bond Street and Marble Arch stations moments away. The area combines the convenience of central London living with the charm of a peaceful residential address.

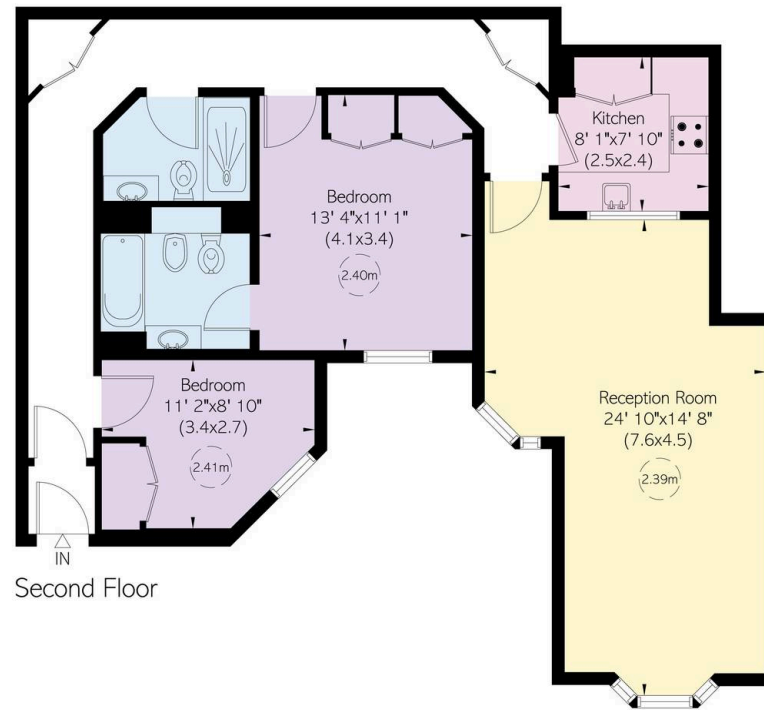


Bloomfield Court, Boudon Street, W1

**RUSSELL
SIMPSON**

Approximate Internal Area
931 sq ft/ 86 sq m

This plan is for layout guidance only. Not drawn to scale unless stated. Windows and door openings are approximate. Whilst every care is taken in the preparation of this plan, please check all dimensions, shapes, and compass bearings before making any decisions reliant upon them.



**RUSSELL
SIMPSON**

Contact Us

+44 (0) 20 3761 9691

13 Kensington Square
London
W8 5HD

kensington@russellsimpson.co.uk