



RUSSELL SIMPSON

Elegant five-bedroom family home
with direct communal garden access
in Notting Hill

BLLENHEIM CRESENT
NOTTING HILL W11

Blenheim Cresent

Let

BEDROOMS 5	INTERNAL 2,866 SQ FT 266 SQM	OUTDOOR 742 SQ FT	FURNISHED STATUS Unfurnished
BATHROOMS 4		EPC D	COUNCIL TAX RBKC



The Property

Beautifully presented Victorian house arranged over five floors with generous proportions throughout.

Entering the house on the ground floor, you are welcomed into an entrance hall with elegant wooden floors that leads to two well-proportioned reception rooms. The first reception room features charming period details and continues the beautiful wooden flooring, while the second reception room is distinguished by an elegant fireplace, creating a refined focal point for the space. High ceilings throughout this level create a wonderful sense of scale and grandeur.





The Kitchen

Descending to the basement level reveals the heart of the home - a spectacular kitchen measuring over thirty feet in length. This impressive space features a central island and is filled with light from the large doors that open directly onto the garden. The kitchen's generous proportions and thoughtful design make it ideal for both daily living and social gatherings. A utility room and guest washroom are conveniently located on the sub-basement level below.



The Principal Bedroom

The first floor is devoted entirely to the principal bedroom suite, offering exceptional privacy and luxury. This substantial bedroom features built-in storage and an attractive fireplace, complemented by a magnificent ensuite bathroom. The ensuite is particularly impressive, featuring twin sinks, both shower and bath facilities, creating a sophisticated sanctuary.

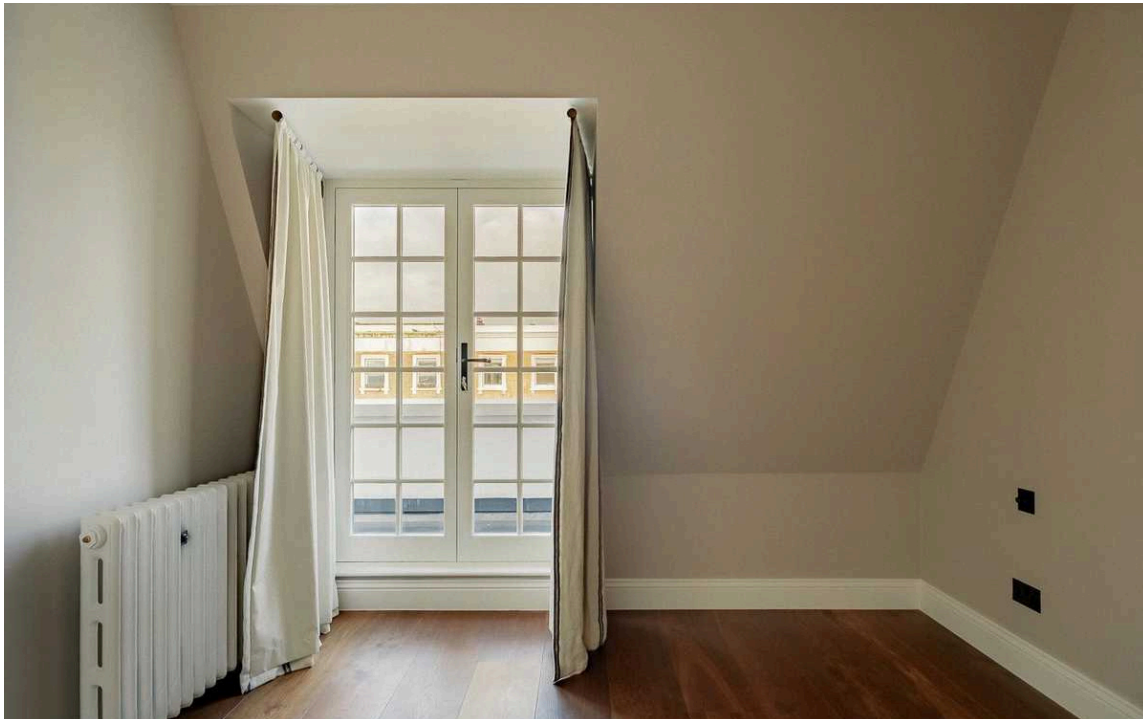




Further Bedrooms

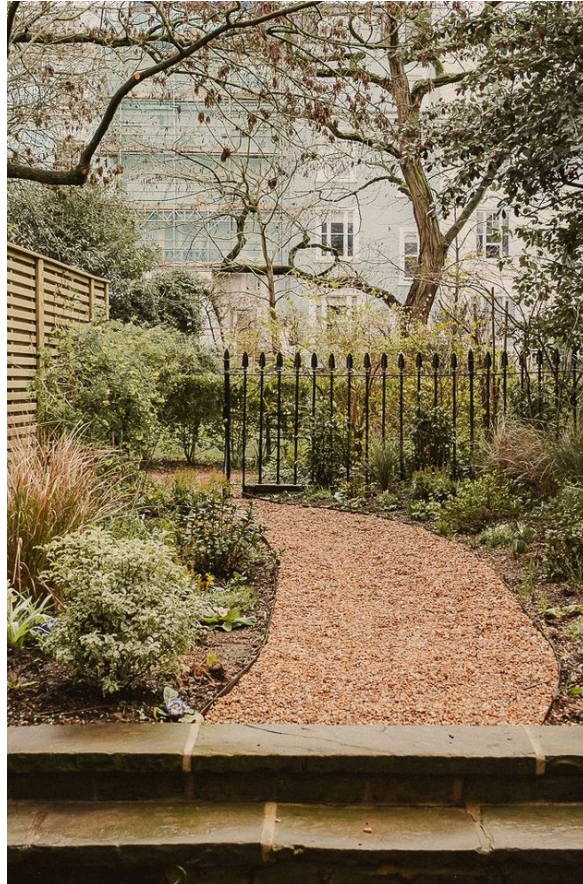
The second floor accommodates two further bedrooms, one benefiting from an ensuite bathroom, alongside a separate family bathroom serving this level.

The third floor completes the accommodation with two additional bedrooms that share a well-appointed bathroom, maximising the property's flexible living arrangements.



Outdoor Spaces

The property includes direct access to the communal gardens from the kitchen, providing a seamless connection between indoor and outdoor living. This rare feature offers residents the benefit of beautifully maintained garden space in the heart of Notting Hill.





The Neighbourhood

Blenheim Crescent is an attractive tree-lined street in the heart of Notting Hill, moments away from the vibrant Portobello Road with its famous market, antique shops, and eclectic mix of restaurants and cafés. The area is renowned for its elegant white stucco terraces and village-like atmosphere. Ladbroke Grove and Notting Hill Gate stations are within easy reach, providing excellent transport links across London. The open spaces of Hyde Park and Holland Park are nearby, while the upmarket boutiques and dining establishments of Westbourne Grove are just a short walk away.

Blenheim Crescent

Approximate Internal Area 239.3 sq m /
2575.9 sq ft

**RUSSELL
SIMPSON**



This plan is for layout guidance only.
Not drawn to scale unless stated. Windows
and door openings are approximate. Whilst
every care is taken in the preparation of this
plan, please check all dimensions, shapes,
and compass bearings before making any
decisions reliant upon them.

**RUSSELL
SIMPSON**

Contact Us

+44 (0) 20 3761 9691

13 Kensington Square
London
W8 5HD

kensington@russellsimpson.co.uk