



RUSSELL SIMPSON

Bright two-bedroom Victorian
conversion with charming period
features

BASSETT ROAD
NORTH KENSINGTON W10

Bassett Road

Let

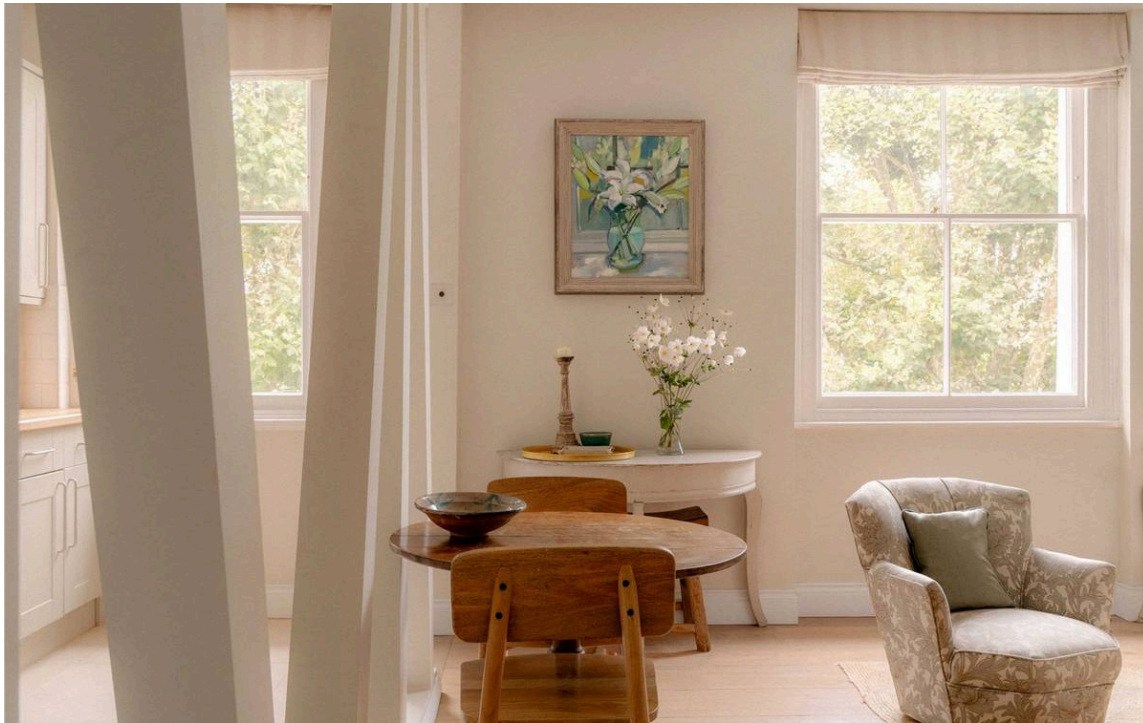
BEDROOMS 2	INTERNAL 911 SQ FT 84 SQM	OUTDOOR —	FURNISHED STATUS Furnished
BATHROOMS 2		EPC C	COUNCIL TAX RBKC, E



The Property

Beautifully presented two-bedroom flat across two floors.

Entering the flat on the second floor, you are welcomed into a generous reception room with high ceilings and large windows that fill the space with light. The room features an elegant fireplace with a marble surround and an exposed brick interior, creating a refined focal point.



Indoor Spaces

The reception room flows seamlessly into a well-appointed kitchen featuring light-coloured fitted units, wooden worktops, and modern appliances, including an integrated microwave and gas hob. A distinctive structural beam adds character to this open-plan living space, while the round dining table creates an informal breakfast area.



The Bedrooms

The second floor also features a well-proportioned second bedroom with built-in storage and a bathroom with modern fittings.

The helical staircase leads to the third floor, where the principal bedroom occupies the entire floor, enjoying lofty proportions and excellent natural light from large windows. The room benefits from built-in storage solutions and an adjacent bathroom.



The Design

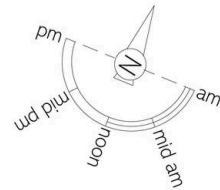
Throughout the flat, wooden floors and neutral décor create a refined contemporary style, while period features, including high ceilings and original architectural details, maintain the building's Victorian charm.





The Neighbourhood

Bassett Road is a quiet residential street lined with attractive Victorian terraced houses in the heart of North Kensington. The tree-lined avenue provides a peaceful setting while remaining within easy reach of the vibrant amenities of Ladbrooke Grove and Notting Hill. The area offers excellent transport links with nearby underground stations providing swift access to central London, while the open spaces of Holland Park are moments away for recreation and relaxation.



Bassett Road, W10

**RUSSELL
SIMPSON**

Approximate Internal Area

911 sq ft/ 85 sq m

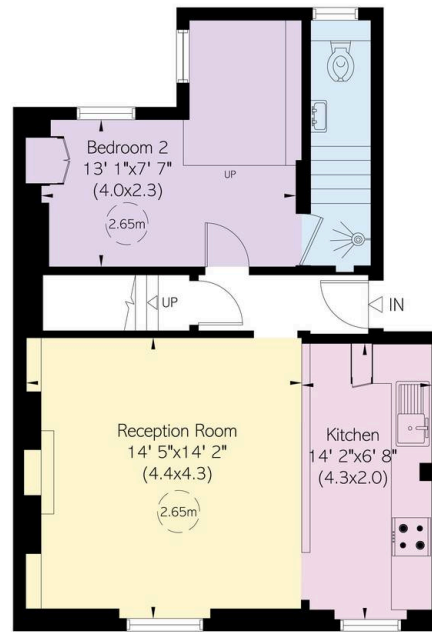
Including limited use area

137 sq ft/ 13 sq m

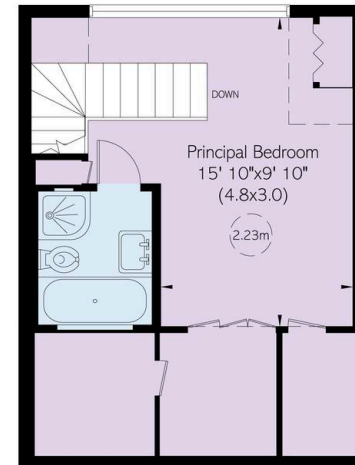
This plan is for layout guidance only. Not drawn to scale unless stated. Windows and door openings are approximate. Whilst every care is taken in the preparation of this plan, please check all dimensions, shapes, and compass bearings before making any decisions reliant upon them.



Reduced head height below 1.5m



Second Floor



Third Floor

**RUSSELL
SIMPSON**

Contact Us

+44 (0) 20 3761 9691

13 Kensington Square
London
W8 5HD

kensington@russellsimpson.co.uk