



## **RUSSELL SIMPSON**

Elegant four-bedroom family home  
in prestigious Kensington location

ANSDELL TERRACE  
KENSINGTON W8

# Ansdell Terrace

£3,981 P/W

BEDROOMS 4	INTERNAL 2,841 SQ FT	OUTDOOR 147 SQ FT	FURNISHED STATUS Furnished
BATHROOMS 3	263 SQM	EPC E	COUNCIL TAX RBKC, H



## The Property

A beautifully presented house arranged over four floors.

Entering the house on the ground floor, you step into a welcoming reception room with wooden floors and high ceilings that create a generous sense of scale. The space is filled with natural light and features a delightful conservatory area with glass doors and skylights, adding brightness and an airy quality to the room. This flows seamlessly through to the contemporary kitchen. The kitchen features sleek white cabinetry with a striking red backsplash, dark countertops, and modern appliances including gas cooking.



## The Second Reception Room

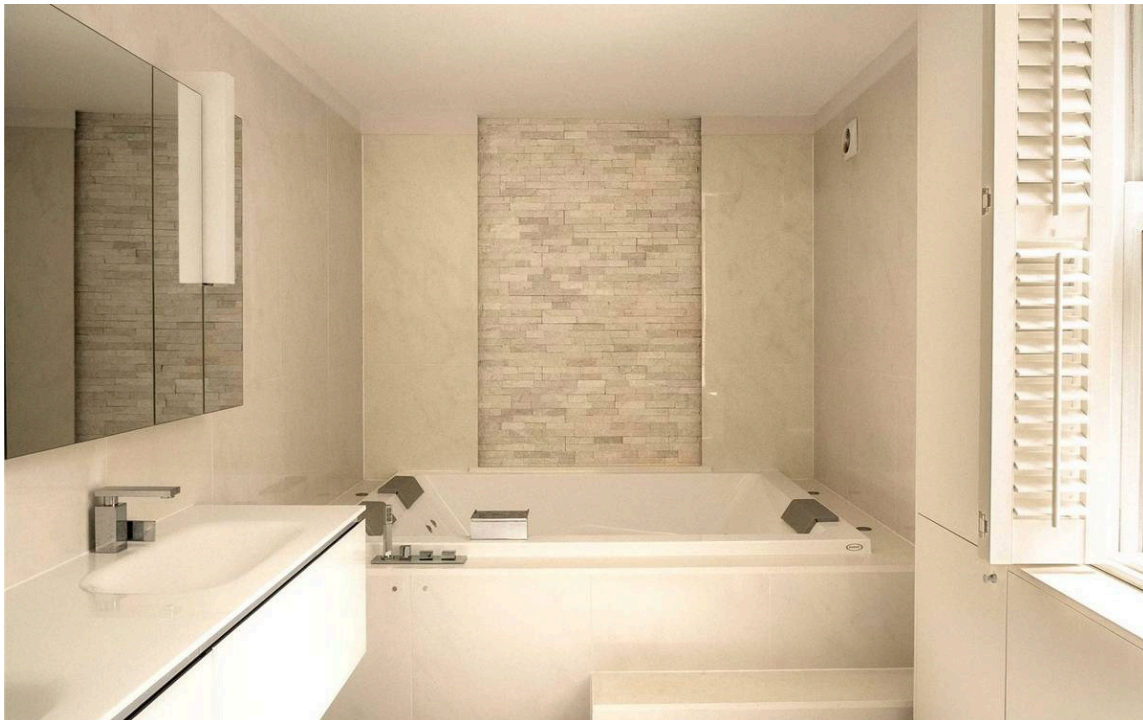
The first floor houses the second reception room, a grand and spacious area with lofty proportions, wooden floors, and an elegant fireplace as its focal point. The sophisticated interiors are complemented by excellent natural light. This level also features a separate office and a guest washroom at the rear of the property.

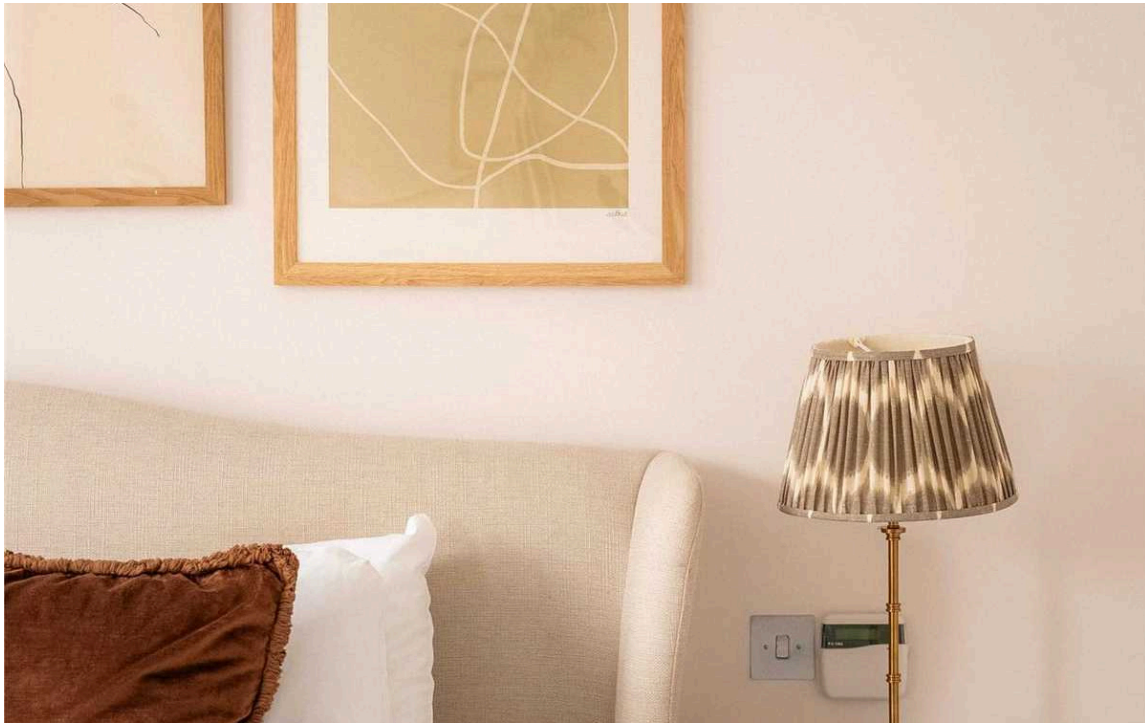




## The Principal Bedroom

The entire second floor is dedicated to the principal bedroom suite, offering exceptional privacy and luxury. The substantial bedroom benefits from high ceilings and wooden floors, maintaining the refined character found throughout the property. A separate dressing room provides generous storage space, while the ensuite bathroom features twin sinks, both a bath and shower.





## Further Bedrooms

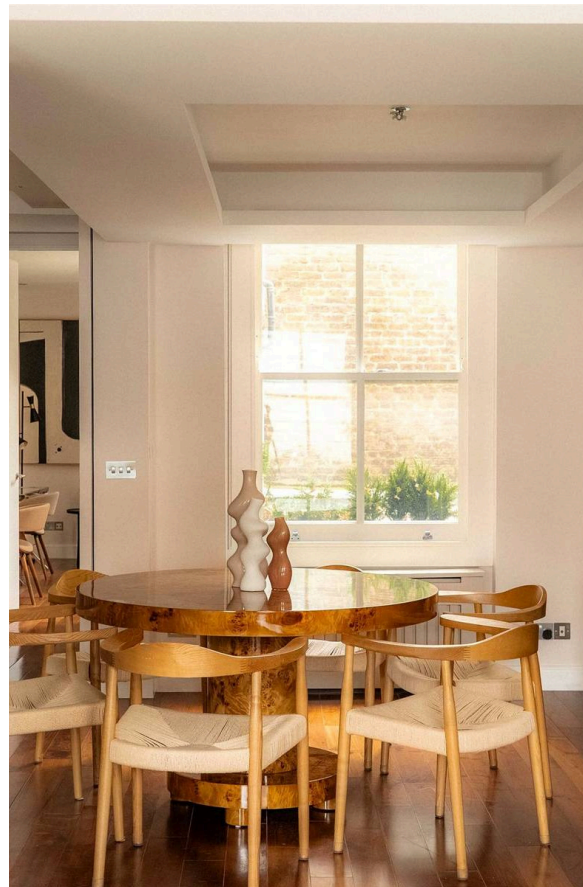
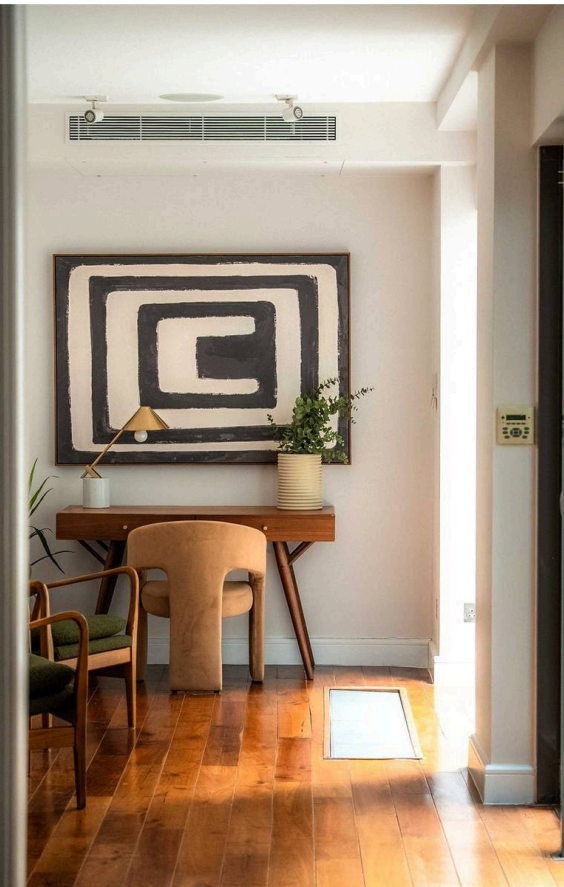
The third floor accommodates three additional well-proportioned bedrooms. One bedroom benefits from an ensuite bathroom, while a separate family bathroom with modern fixtures serves the remaining two bedrooms.

The basement level houses a TV room, a utility room offers practical storage and laundry facilities, while a guest washroom adds convenience to this lower level.



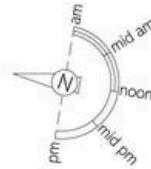
## The Design

The property has been presented in superb condition throughout, with a restrained contemporary style. High ceilings create an exceptional sense of scale across all levels, while wooden floors unify the graceful interiors. The sophisticated design combines modern functionality with well-proportioned rooms, enhanced by features such as the conservatory area and fireplace.



## The Neighbourhood

Ansdell Terrace is a quiet residential street in the heart of Kensington, moments away from the cultural attractions of South Kensington. The location provides easy access to the Natural History Museum, Victoria and Albert Museum, and the Royal Albert Hall. High Street Kensington and South Kensington stations are within walking distance, offering excellent transport connections. The area features upmarket boutiques, fine dining establishments, and the open spaces of Hyde Park and Kensington Gardens are nearby, making this an exceptionally desirable family address in one of London's most prestigious postcodes.



## Ans dell Terrace, W8

**RUSSELL  
SIMPSON**

**Approximate Internal Area**  
2,541 sq ft/ 264 sq m

**Outside Area**  
147 sq ft/ 14 sq m

This plan is for layout guidance only. Not drawn to scale unless stated. Windows and door openings are approximate. Whilst every care is taken in the preparation of this plan, please check all dimensions, shapes, and compass bearings before making any decisions reliant upon them.



**RUSSELL  
SIMPSON**

---

## Contact Us

+44 (0) 20 3761 9691

13 Kensington Square  
London  
W8 5HD

[kensington@russellsimpson.co.uk](mailto:kensington@russellsimpson.co.uk)