



## **RUSSELL SIMPSON**

Sophisticated two-bedroom  
apartment with elegant interiors and  
charming period features

EVEYLN GARDENS  
SOUTH KENSINGTON SW7

Eveyln Gardens

£2,600 <sub>P/W</sub>

BEDROOMS 2	INTERNAL  1,064 <sub>SQ FT</sub>  98 <sub>SQM</sub>	OUTDOOR  12 <sub>SQ FT</sub>	FURNISHED STATUS  Furnished
BATHROOMS 2		EPC  D	COUNCIL TAX  RBKC



## The Property

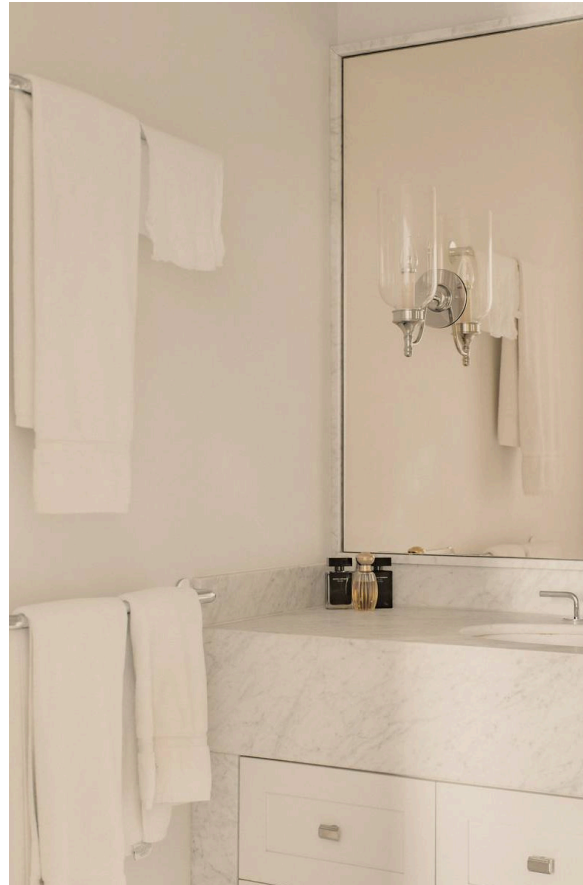
A beautifully presented first-floor apartment combining classic architectural details with refined contemporary styling

Stepping into the flat, you are greeted by a well-proportioned reception and dining rooms that flow seamlessly together, creating a generous entertaining space filled with natural light. The principal reception room features elegant bay windows, high ceilings with moulded cornices, and a decorative fireplace. Dark wooden floors throughout add warmth and elegance to the refined living spaces. The kitchen is thoughtfully designed with fitted marble units and high-quality appliances, including integrated storage solutions.



## The Bedrooms

The principal bedroom is substantial and light-filled, featuring built-in storage and an ensuite bathroom. High ceilings create a sense of scale, while large windows fill the space with light. The second bedroom is well-proportioned and benefits from excellent natural light and inbuilt storage solutions, with direct access to a charming balcony and the shared bathroom next door.

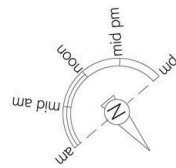






## The Neighbourhood

Evelyn Gardens is an attractive tree-lined street in the heart of South Kensington, moments away from the area's upmarket boutiques and many restaurants. The location offers excellent transport links, with South Kensington underground station within easy reach, providing access to the artistic treasures of the Victoria & Albert Museum and Natural History Museum. The open spaces of Hyde Park are a short walk away, while the sophisticated shopping and dining of the King's Road and Sloane Square remain close by.



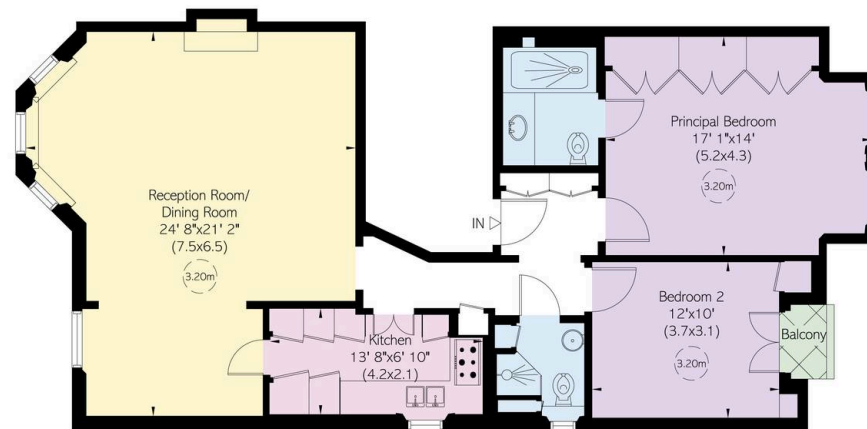
## Evelyn Gardens, SW<sub>3</sub>

**RUSSELL  
SIMPSON**

**Approximate Internal Area**  
1,064 sq ft / 99 sq m

**Outside Area**  
13 sq ft / 1 sq m

This plan is for layout guidance only. Not drawn to scale unless stated. Windows and door openings are approximate. Whilst every care is taken in the preparation of this plan, please check all dimensions, shapes, and compass bearings before making any decisions reliant upon them.



First Floor

**RUSSELL  
SIMPSON**

---

## Contact Us

+44 (0) 20 7225 0277

151A Sydney Street  
London  
SW3 6NT

[chelsea@russellsimpson.co.uk](mailto:chelsea@russellsimpson.co.uk)

In accordance with the Property Mis-Description Act 1991, the following details have been prepared in good faith, and are not intended to constitute part of an offer or contract. Any information contained herein (whether in the text, plans or photographs) is given in good faith but should not be relied upon as being a statement of representation of fact. Nothing in these Particulars shall be deemed to be a statement that the property is in good condition or otherwise nor that any services or facilities are in good working order. Any measurements of distances referred to herein are approximate only. October 2021