



RUSSELL SIMPSON

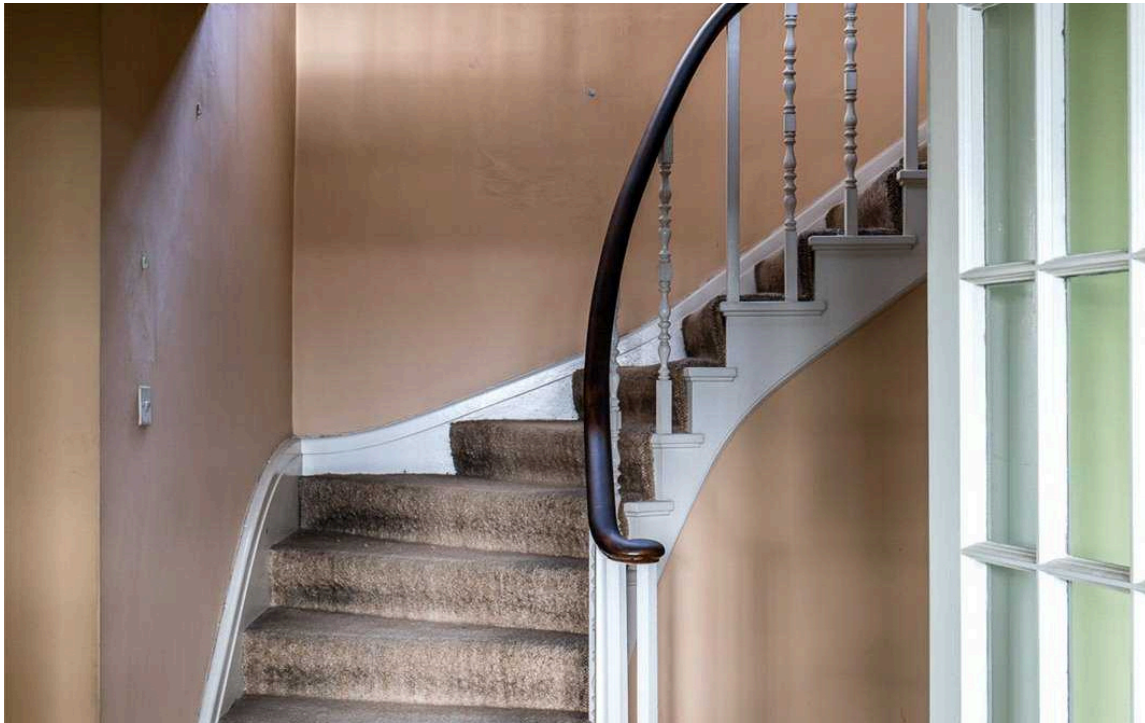
A rare opportunity to acquire an
unmodernized duplex penthouse in
this popular portered mansion block

TROY COURT
KENSINGTON W8

Troy Court

Sold

<div>BEDROOMS</div> <div>3</div>	<div>INTERNAL</div> <div>1,624 <small>SQ FT</small></div> <div>150 <small>SQM</small></div>	<div>OUTDOOR</div> <div>—</div>	<div>COUNCIL</div> <div>KEN</div>
<div>BATHROOMS</div> <div>1</div>		<div>EPC</div> <div>E</div>	<div>COUNCIL TAX</div> <div>G</div>
<div>TENURE</div> <div>Leasehold</div>	<div>LEASE LENGTH</div> <div>171 <small>YEARS</small></div>	<div>GROUND RENT</div> <div>£50 <small>P/Y</small></div>	<div>SERVICE CHARGE</div> <div>£10,830 <small>P/Y</small></div>



The Property

Please note this is a probate and offers are welcome from Tuesday 26th of October.

The flat occupies the sixth and seventh floor, with a bright and open southerly aspect. On the sixth floor there is a spacious living room, a separate kitchen, a cloakroom and a study. On the upper floor you are met with two good size bedrooms, a separate dressing room and a bathroom.





The Neighbourhood

Troy Court is located within walking distance to Kensington High Street tube as well as being moments from Holland Park.

Troy Court, W8

APPROX. GROSS INTERNAL AREA *

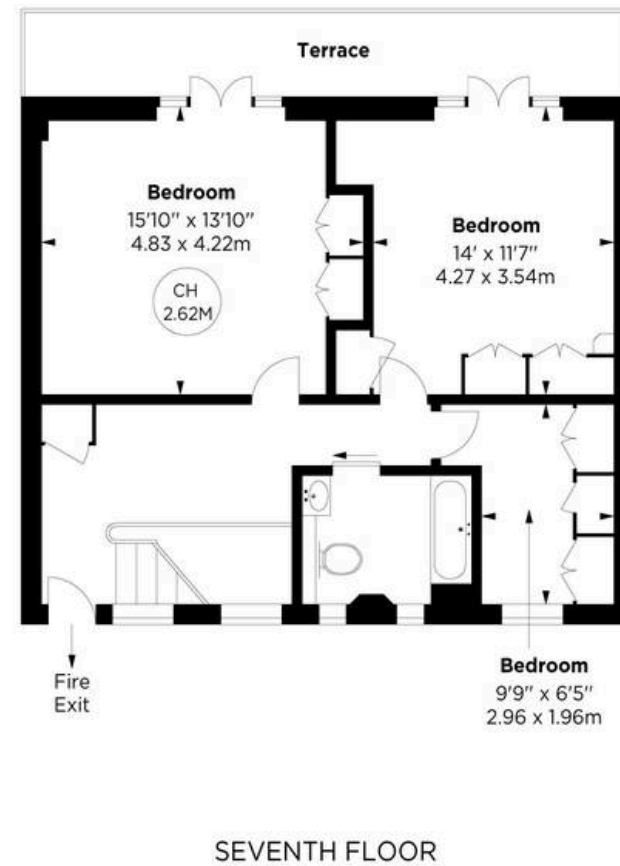
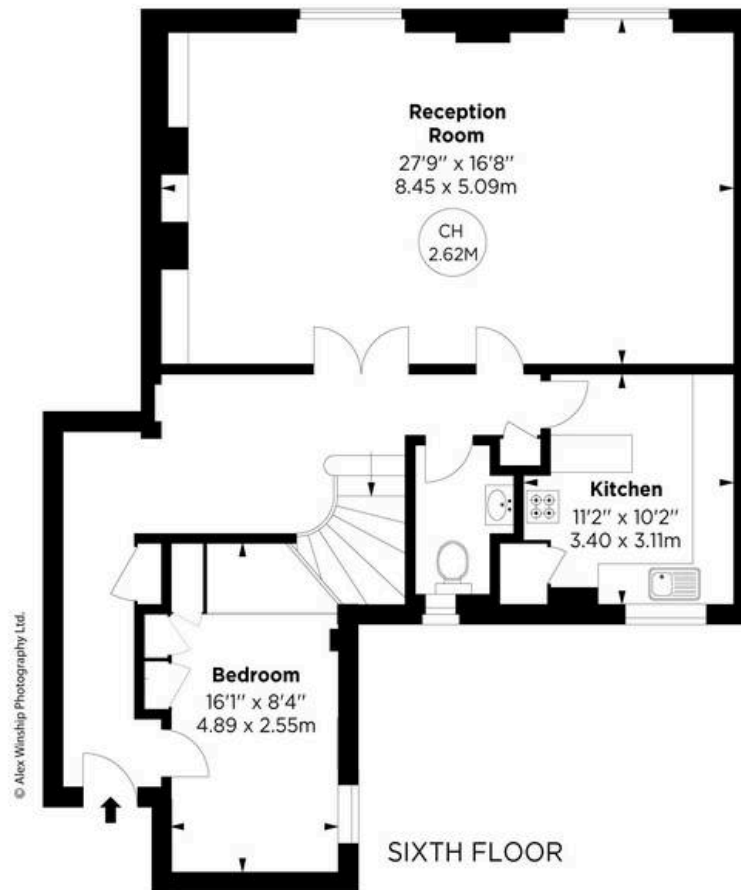
1616 Sq Ft - 150.24 Sq M



Key :

CH - Ceiling Height

This floorplan is for GUIDANCE ONLY and NOT FOR VALUATION purposes.



© Alex Winship Photography Ltd.

ALEX WINSHIP
Photography
© Alex Winship Photography Ltd.

*Floorplan for guidance only, not to scale or valuation purposes. It must not be relied upon as a statement of fact. All measurements and areas are approximate and have been prepared in accordance with the current edition of the RICS Code of Measuring Practice.



**RUSSELL
SIMPSON**

Contact Us

+44 (0) 20 7225 0277

Contact us

info@russellsimpson.co.uk

Sydney Street

+44 (0) 20 7225 0277

151A Sydney Street

London

SW3 6NT

chelsea@russellsimpson.co.uk

Kensington Square

+44 (0) 20 3761 9691

13 Kensington Square

London

W8 5HD

kensington@russellsimpson.co.uk