



RUSSELL SIMPSON

Cosy second floor flat with lift and
porter near the King's Road

SWAN COURT
CHELSEA SW3

Swan Court

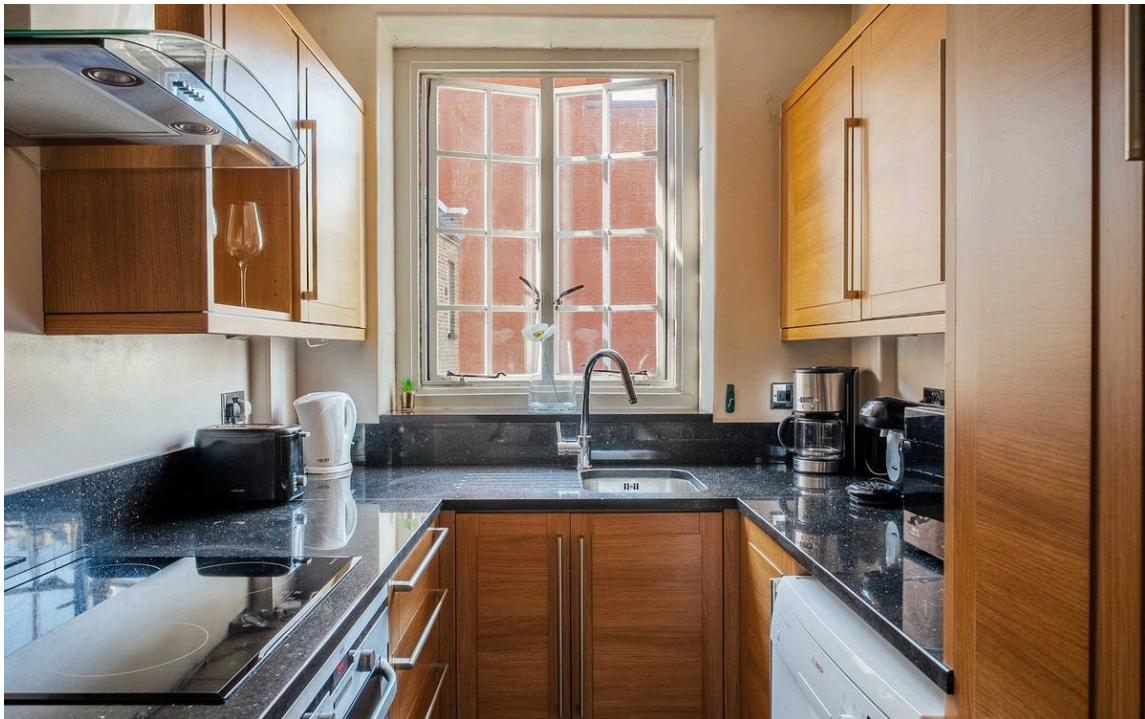
£1,200,000

BEDROOMS 2	INTERNAL 800 SQ FT	OUTDOOR —	COUNCIL RBKC
BATHROOMS 1	74 SQM	EPC E	COUNCIL TAX G
TENURE Leasehold	LEASE LENGTH 110 YEARS	GROUND RENT —	SERVICE CHARGE £5,002 P/Y



The Property

The property comprises of a spacious living room with a fully fitted kitchen. Two bedrooms and a bathroom with plenty of storage throughout. This flat sits amongst a portfolio of nine properties which are for sale individually or as a portfolio. Should the portfolio be of interest please enquire for further details.





The Bedrooms





The Neighbourhood

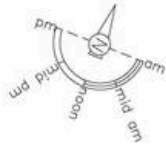
Swan Court, is a prestigious portered building in the heart of Chelsea. Located just to the south of the King's Road, it is well positioned to enjoy all the local and international amenities and shopping area has to offer.

Swan Court,
Chelsea Manor Street, SW3

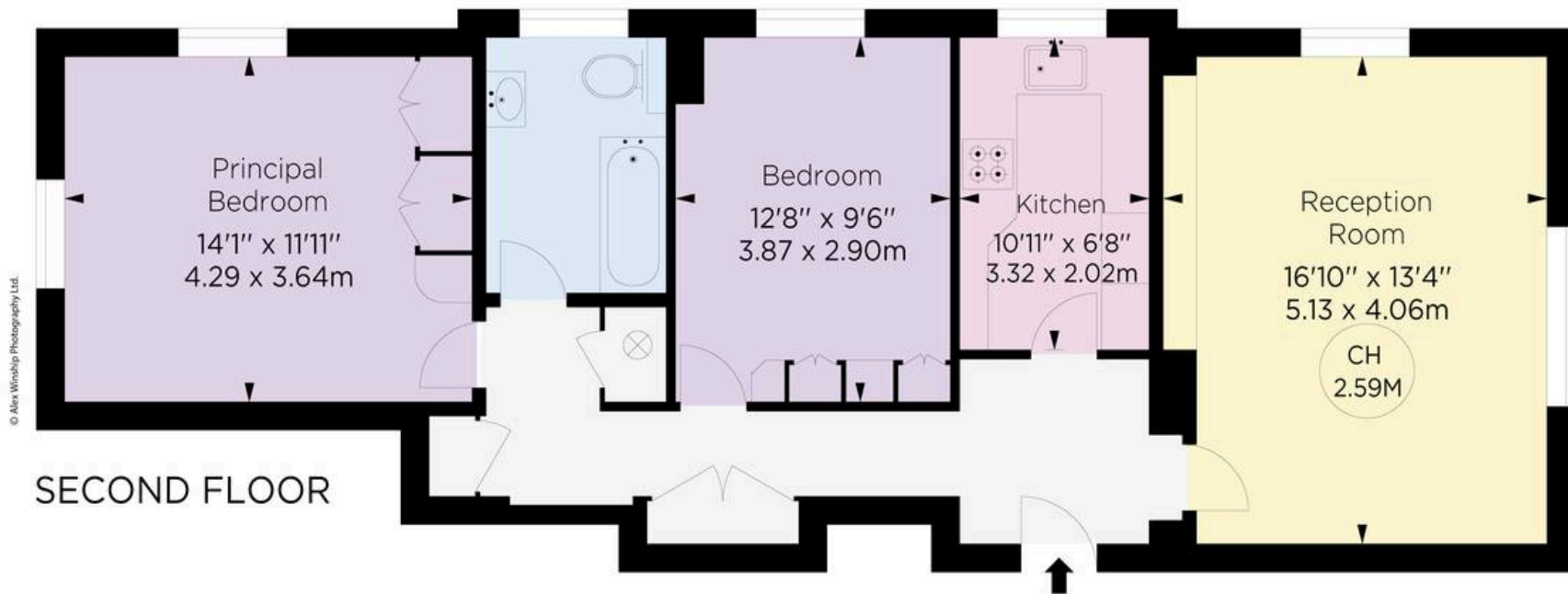
**RUSSELL
SIMPSON**

Approx. gross internal area
800 Sq Ft / 74.32 Sq M

This plan is for layout guidance only. Not drawn to scale unless stated. Windows and door openings are approximate. Whilst every care is taken in the preparation of this plan, please check all dimensions, shapes, and compass bearings before making any decisions reliant upon them.



Key :
CH - Ceiling Height



© Alex Winship Photography Ltd.

**ALEX
WINSHIP**
Photography

*Floorplan for guidance only, not to scale or valuation purposes. It must not be relied upon as a statement of fact. All measurements and area are approximate and have been prepared in accordance with the current edition of the RICS Code of Measuring Practice.



**RUSSELL
SIMPSON**

Contact Us

+44 (0) 20 7225 0277

151A Sydney Street
London
SW3 6NT

chelsea@russellsimpson.co.uk