

RUSSELL SIMPSON

A Fabulous three bedroom family
apartment in the heart of South
Kensington with Private garden

STANHOPE GARDENS
GLOUCESTER ROAD SW7

Stanhope Gardens

Sold

BEDROOMS 3	INTERNAL 2,084 SQ FT	OUTDOOR —	COUNCIL GLO
BATHROOMS 3	193 SQM	EPC D	COUNCIL TAX —
TENURE Share of freehold	LEASE LENGTH 111 YEARS	GROUND RENT —	SERVICE CHARGE £5,663 P/Y



The Property

This 2084 sq ft period maisonette occupies a mid terrace position directly overlooking the communal garden. The ground floor double reception room enjoys high ceilings, ornate cornicing and a fireplace. The kitchen breakfast room opens onto a private terrace with stairs down to a magical private garden extending to almost 600 sq ft.

The master bedroom with en-suite bathroom and dressing area enjoys wonderful light from a skylight and three French doors onto the private garden. Two further double bedrooms one with en-suite bathroom and the other with its own shower room.

Stanhope Gardens is well located for all the shopping and transport amenities of both Gloucester Road and South Kensington. It is also within walking distance from the open spaces of Hyde Park.



img 1

Picture No. 04

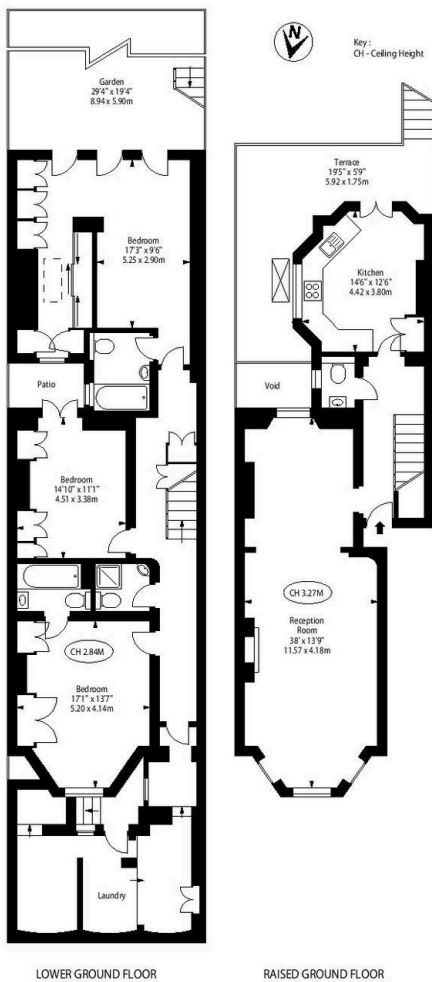
img 2

Picture No. 08

Stanhope Gardens, SW7

APPROX. GROSS INTERNAL AREA *
2084 FL² - 193.60 M²

This floorplan is for GUIDANCE ONLY and NOT FOR VALUATION purposes.



© CGP Design Ltd.

Measurements and features shown are approximate and for illustrative purposes only.
Whilst we don't doubt the accuracy of this floor plan, no responsibility is taken for any error or omission.
If there is any aspect of particular importance, you should carry out or commission your own inspection of the property.

**RUSSELL
SIMPSON**

Contact Us

+44 (0) 20 7225 0277

Contact us

info@russellsimpson.co.uk

Sydney Street

+44 (0) 20 7225 0277

151A Sydney Street
London
SW3 6NT

chelsea@russellsimpson.co.uk

Kensington Square

+44 (0) 20 3761 9691

13 Kensington Square
London
W8 5HD

kensington@russellsimpson.co.uk