



**RUSSELL  
SIMPSON**

Charming ground floor apartment  
with porter in South Kensington

STANHOPE GARDENS  
SOUTH KENSINGTON SW7

# Stanhope Gardens

£1,650,000

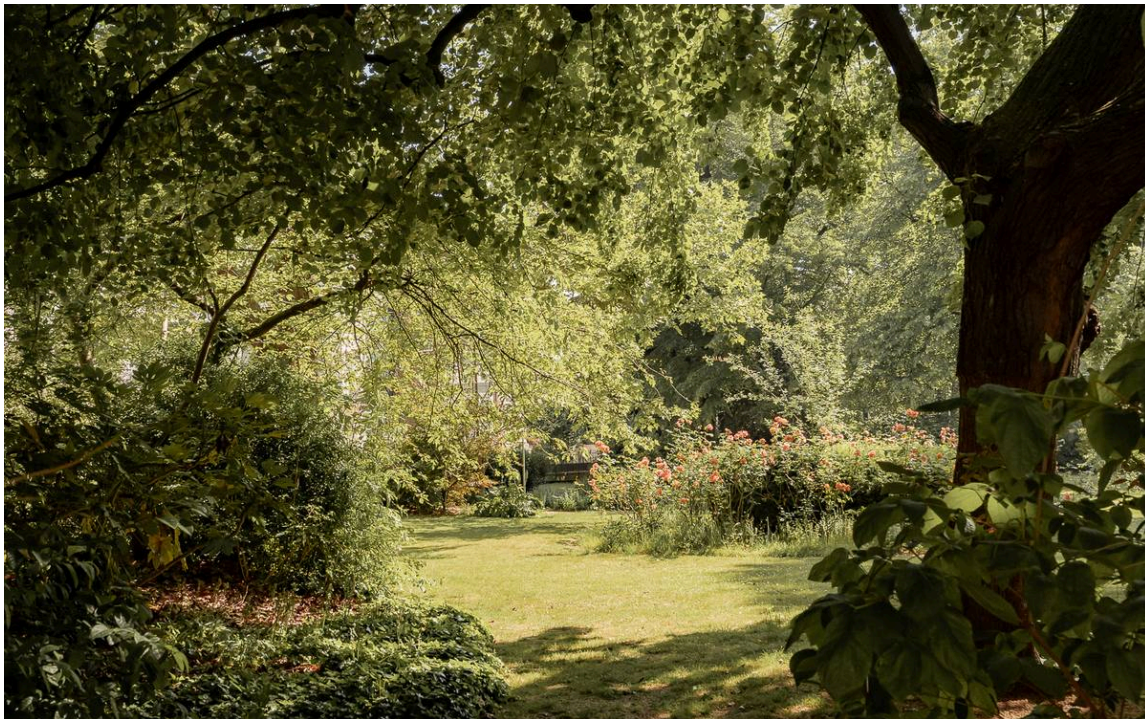
BEDROOMS 2	INTERNAL 886 SQ FT	OUTDOOR —	COUNCIL RBKC
BATHROOMS 2	82 SQM	EPC D	COUNCIL TAX G
TENURE Leasehold	LEASE LENGTH 969 YEARS	GROUND RENT —	SERVICE CHARGE £6,102 P/Y



## The Property

Two-bedroom flat with access to communal garden

The property is presented in a traditional style. Notable features include high ceilings creating impressive proportions, and wooden floors across the principal living areas. The flat benefits from excellent natural light throughout and thoughtful space planning.



## Indoor Spaces

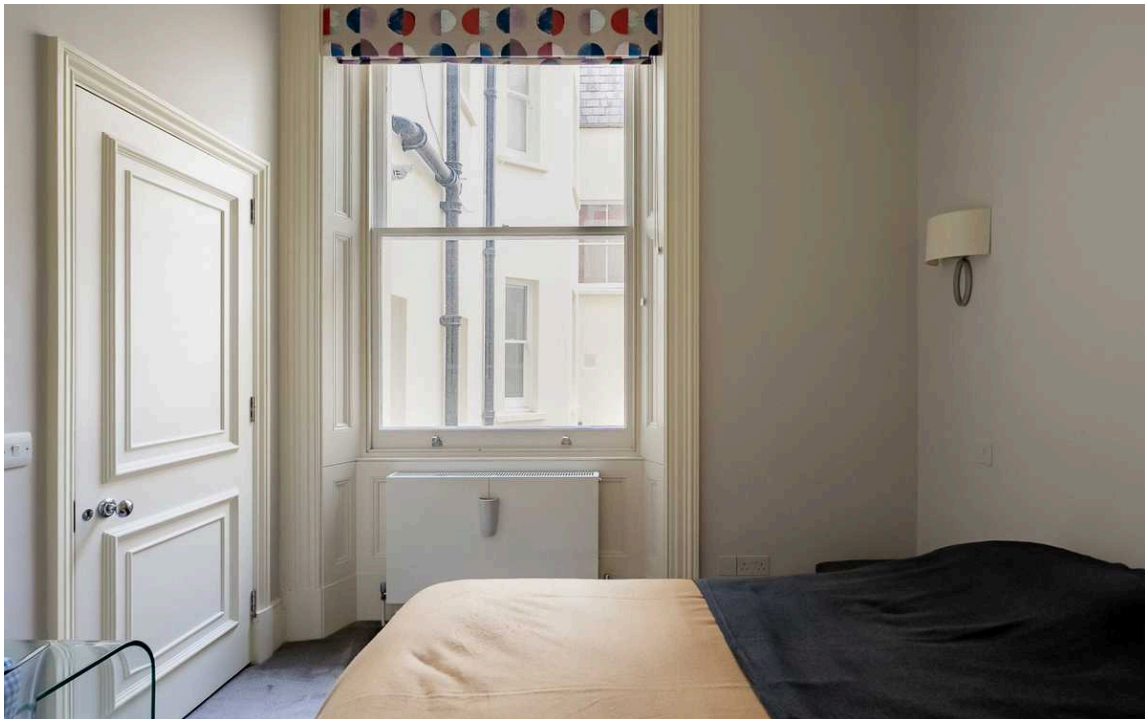
When entering the flat, you are greeted by an exceptionally spacious reception room, via double doors, with a large bay window filling the space with light. Decorated with wooden floors, the room gives enough space for dining and seating areas, perfect for entertaining. A serving hatch connects this space easily with the kitchen, which is well designed with modern appliances and a breakfast bar.





## The Bedrooms

The principal bedroom is positioned at the far end of the property and is generously proportioned with substantial ceiling height and elegant proportions. The room benefits from an ensuite bathroom as well as built in storage. There is also an additional double bedroom, with built-in storage, and a family bathroom





## The Neighbourhood

Stanhope Gardens is a prestigious tree-lined street in South Kensington, with porter service in the building. The area is moments away from the cultural treasures of the Victoria and Albert Museum, Natural History Museum, and Science Museum. Exhibition Road offers excellent shopping and dining options, while Hyde Park is within easy reach. South Kensington Underground station provides excellent transport links, and the upmarket boutiques of Knightsbridge are a short walk away.

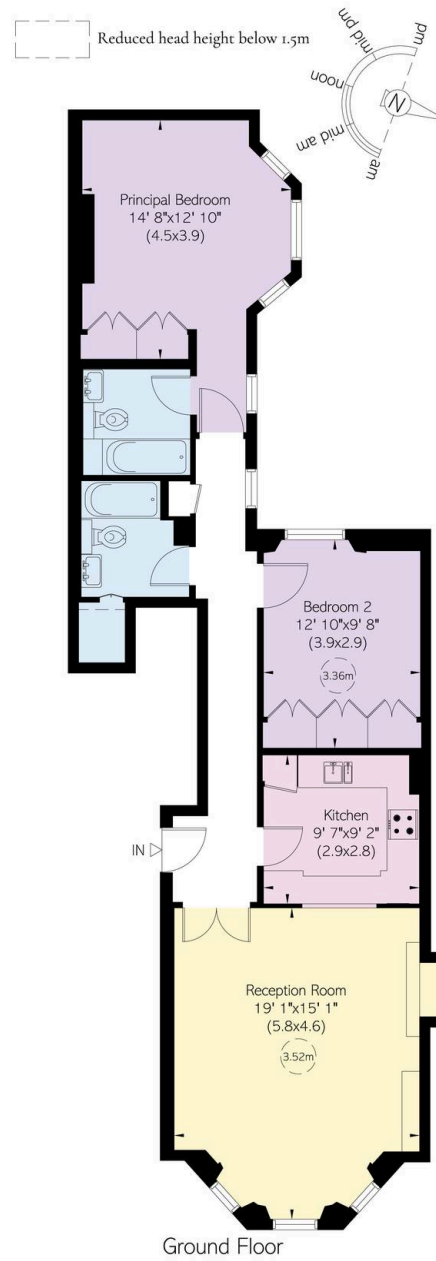
# Stanhope Gardens, SW7

**Approximate Internal Area**  
886 sq ft/ 82 sq m

**Including limited use area**  
9 sq ft/ 1 sq m

## RUSSELL SIMPSON

This plan is for layout guidance only.  
Not drawn to scale unless stated. Windows  
and door openings are approximate. Whilst  
every care is taken in the preparation of this  
plan, please check all dimensions, shapes,  
and compass bearings before making any  
decisions reliant upon them.



**RUSSELL  
SIMPSON**

---

## Contact Us

+44 (0) 20 7225 0277

151A Sydney Street  
London  
SW3 6NT

[chelsea@russellsimpson.co.uk](mailto:chelsea@russellsimpson.co.uk)