

## **RUSSELL SIMPSON**

Sublime two-bedroom flat with a  
south-facing balcony close to  
Ladbroke Grove station

ST MARKS ROAD  
NORTH KENSINGTON W10

St Marks Road

Sold

BEDROOMS 3	INTERNAL  1,925 SQ FT  178 SQM	OUTDOOR  73 SQ FT	COUNCIL  —
BATHROOMS 2		EPC  E	COUNCIL TAX  —
TENURE Share of freehold	LEASE LENGTH 955 YEARS	GROUND RENT  —	SERVICE CHARGE  —

# The Property

Beautifully designed duplex flat with lofty rooms and contemporary interiors in North Kensington





## Indoor Spaces

Stepping into the flat on the first floor, a staircase leads up to the central hall. From here, double doors open onto a generous reception room with enough space for separate dining and seating areas. Double height ceilings, overhead skylights and a triple-aspect result in a bright and tranquil space.





## Entertaining Spaces

The reception room flows through to a modern kitchen with fitted units. On the other side, stairs lead up the south-facing balcony. This floor also contains a second reception room with a beautiful stone fireplace.





## The Bedrooms

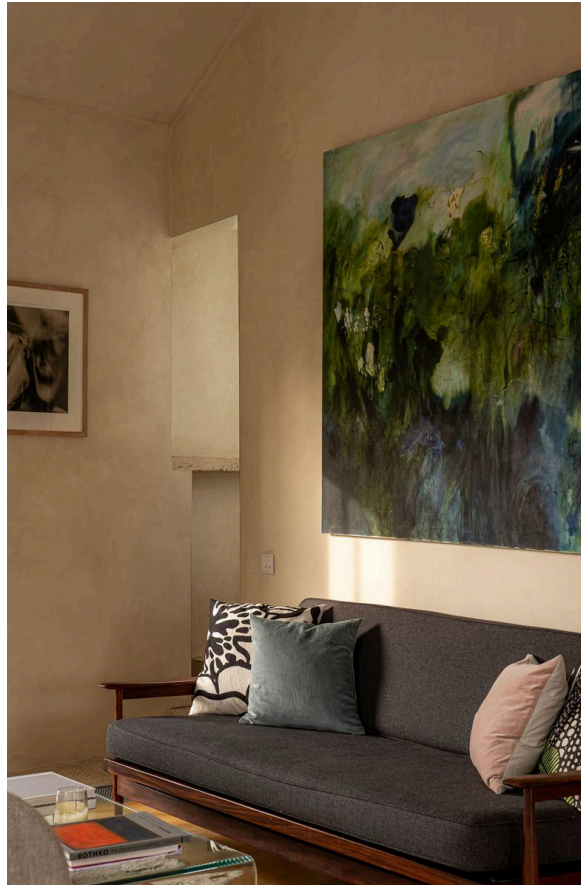
The principal bedroom has an ensuite bathroom, and a guest WC. The third floor offers a second bedroom, with a second bathroom next door. This floor also has a large mezzanine landing with internal balcony, as well as several storage spaces.





## The Design

The flat's contemporary interiors are presented in good condition. Wooden floors, cupboards and walls add to the feeling of coherence and calm, resulting in a bright and beautiful space. It was designed by the practice of Adjaye & Russell (1994 – 2000); founders Sir David Adjaye and William Russell have since become celebrated architects with international reputations.



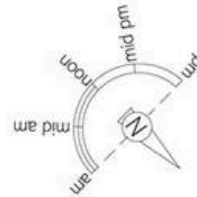


## The Neighbourhood

The property includes a south-facing balcony with enough space for outdoor seating, overlooking the red-brick villas of Bassett Road.

St Marks Road is a residential street in North Kensington. This property is set back from the street, with added privacy from a walled front garden. From here, Ladbroke Grove station is close, while Latimer Road is also nearby. In addition, the green spaces of Kensington Memorial Park are within easy reach.





St Marks Road, W10

**RUSSELL  
SIMPSON**

**Approximate Internal Area**

1,925 sq ft/ 179 sq m

**Including limited use area**

173 sq ft/ 16 sq m

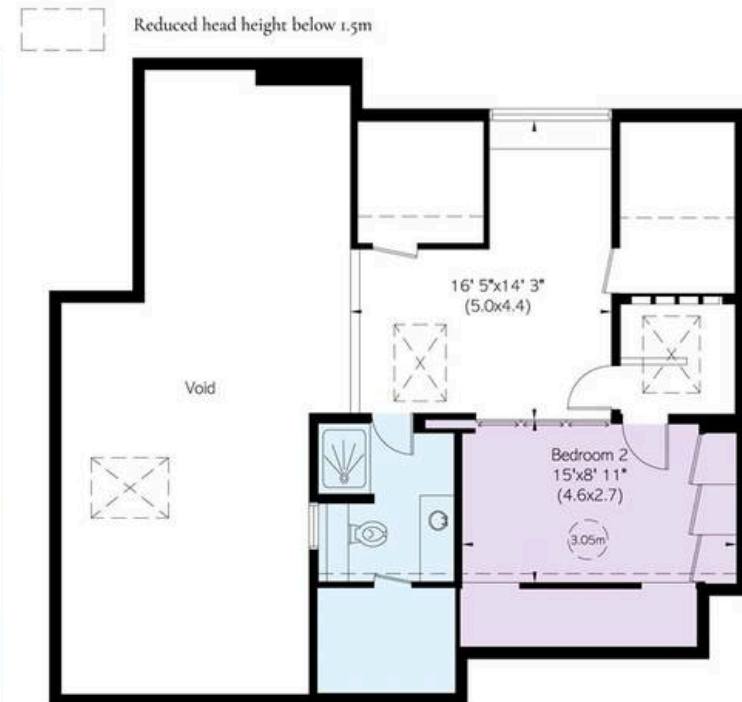
**Outside Area**

73 sq ft/ 7 sq m

This plan is for layout guidance only. Not drawn to scale unless stated. Windows and door openings are approximate. Whilst every care is taken in the preparation of this plan, please check all dimensions, shapes, and compass bearings before making any decisions reliant upon them.



Second Floor



Third Floor

**RUSSELL  
SIMPSON**

---

## Contact Us

+44 (0) 20 3761 9691

13 Kensington Square  
London  
W8 5HD

[kensington@russellsimpson.co.uk](mailto:kensington@russellsimpson.co.uk)

In accordance with the Property Mis-Description Act 1991, the following details have been prepared in good faith, and are not intended to constitute part of an offer or contract. Any information contained herein (whether in the text, plans or photographs) is given in good faith but should not be relied upon as being a statement of representation of fact. Nothing in these Particulars shall be deemed to be a statement that the property is in good condition or otherwise nor that any services or facilities are in good working order. Any measurements of distances referred to herein are approximate only. October 2021