



RUSSELL SIMPSON

Charming one-bedroom riverside
apartment

RIVERPARK COURT
CHELSEA SW3

Riverpark Court

£995,000

<div>BEDROOMS</div> <div>1</div>	<div>INTERNAL</div> <div>595 <small>SQ FT</small></div> <div>55 <small>SQM</small></div>	<div>OUTDOOR</div> <div>—</div>	<div>COUNCIL</div> <div>RBKC</div>
<div>BATHROOMS</div> <div>1</div>		<div>EPC</div> <div>D</div>	<div>COUNCIL TAX</div> <div>F</div>
<div>TENURE</div> <div>Leasehold</div>	<div>LEASE LENGTH</div> <div>111 <small>YEARS</small></div>	<div>GROUND RENT</div> <div>—</div>	<div>SERVICE CHARGE</div> <div>£5,919 <small>P/Y</small></div>



The Property

A delightful one-bedroom flat offering refined living with lift access and air conditioning throughout

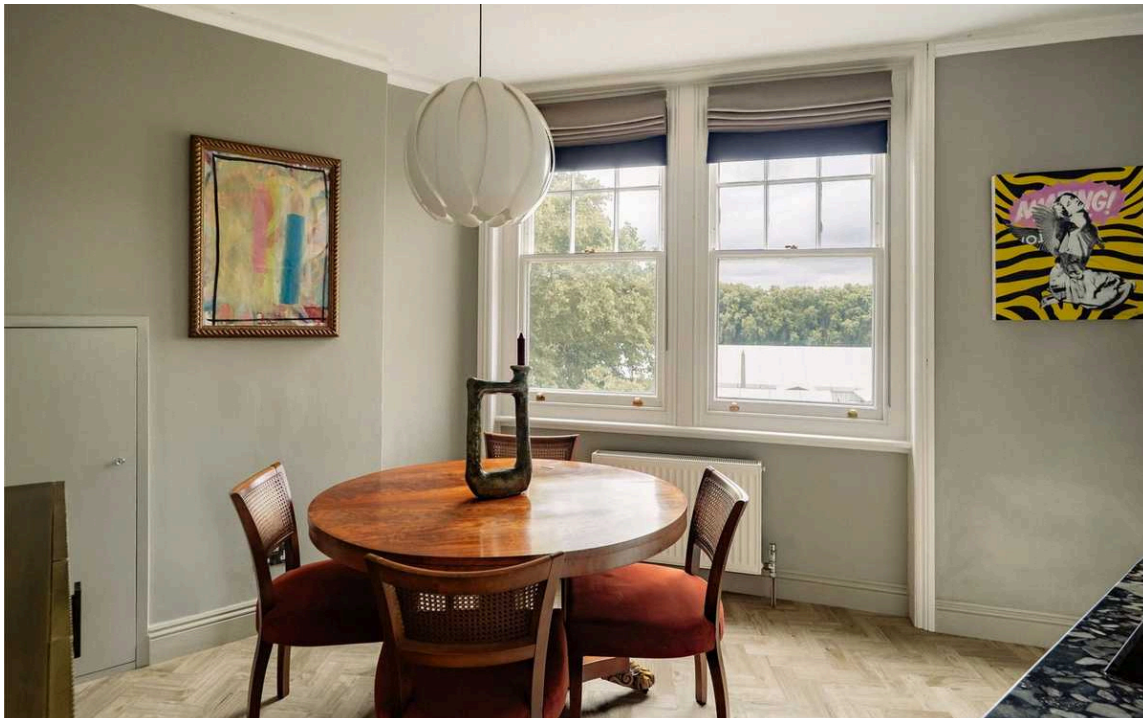
Throughout the flat, wooden flooring creates continuity and warmth, while modern amenities ensure comfort and convenience.



Indoor Spaces

Upon entering this beautifully proportioned apartment, the reception room immediately impresses with the abundance of natural light coming in from multiple windows overlooking the river. High ceilings enhance the sense of space and grandeur, while the room's generous dimensions comfortably accommodate a dining area alongside space for a home office, all benefiting from the serene river outlook.

Adjacent to the reception room lies a well-appointed eat-in kitchen featuring fitted cabinetry and contemporary appliances, providing both functionality and style for everyday living.



The Bedroom

The bedroom offers a peaceful retreat with excellent natural light and comprehensive built-in storage solutions. The room's well-considered proportions create an inviting and restful environment.

Completing the accommodation is a thoughtfully designed bathroom equipped with both a freestanding bathtub and separate shower. The neutral palette and quality fixtures reflect the property's overall attention to detail.





The Neighbourhood

Located within the prestigious Chelsea district, Riverpark Court provides easy access to the renowned shopping and dining establishments along the King's Road. Transport connections are superb, with Sloane Square station nearby offering swift links across London. The Thames Path and Chelsea Embankment are close at hand for leisurely riverside strolls, while the surrounding streets showcase the area's characteristic elegance and architectural heritage that makes this corner of SW3 so highly sought after.

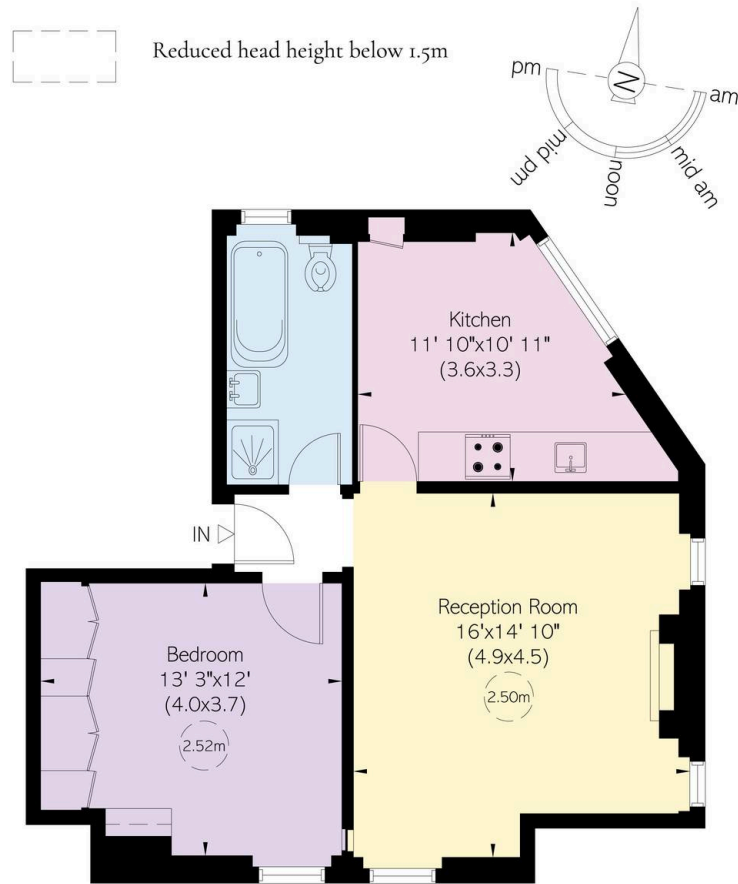
Riverpark Court,
Embankment Gardens, SW₃

**RUSSELL
SIMPSON**

Approximate Internal Area
595 sq ft/ 55 sq m

Including limited use area
2 sq ft/ 0.14 sq m

This plan is for layout guidance only. Not drawn to scale unless stated. Windows and door openings are approximate. Whilst every care is taken in the preparation of this plan, please check all dimensions, shapes, and compass bearings before making any decisions reliant upon them.



Fourth Floor

**RUSSELL
SIMPSON**

Contact Us

+44 (0) 20 7225 0277

151A Sydney Street
London
SW3 6NT

chelsea@russellsimpson.co.uk

In accordance with the Property Mis-Description Act 1991, the following details have been prepared in good faith, and are not intended to constitute part of an offer or contract. Any information contained herein (whether in the text, plans or photographs) is given in good faith but should not be relied upon as being a statement of representation of fact. Nothing in these Particulars shall be deemed to be a statement that the property is in good condition or otherwise nor that any services or facilities are in good working order. Any measurements of distances referred to herein are approximate only. October 2021