

RUSSELL SIMPSON

Elegant four bedroom period house
in Chelsea

REDBURN STREET
CHELSEA SW3

Redburn Street

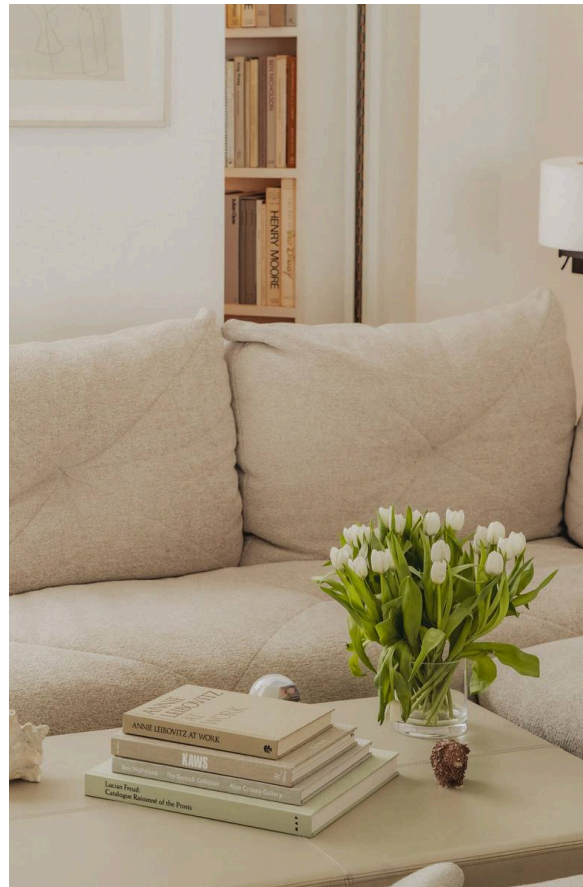
£5,500,000

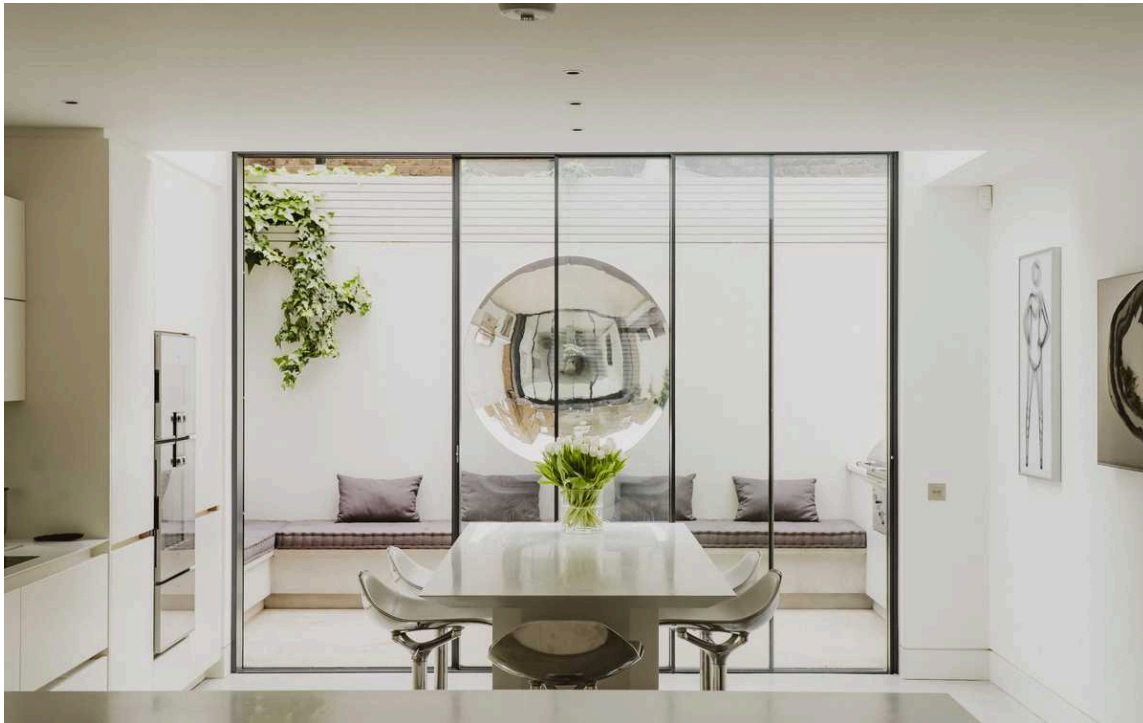
<div>BEDROOMS</div> <div>4</div>	<div>INTERNAL</div> <div>3,244 <small>SQ FT</small></div> <div>301 <small>SQM</small></div>	<div>OUTDOOR</div> <div>413 <small>SQ FT</small></div>	<div>COUNCIL TAX</div> <div>RBKC, H</div>
<div>BATHROOMS</div> <div>6</div>		<div>EPC</div> <div>C</div>	<div>TENURE</div> <div>Freehold</div>

The Property

A beautifully presented house with a private patio garden and terrace, close to Burton Court and King's Road

Stepping into this charming property on the raised ground floor, you are welcomed by an attractive south facing drawing room featuring a marble fireplace and large bay window that floods the space with natural light. The room benefits from high ceilings and elegant period details. Adjacent to the drawing room is a well-proportioned office alongside a practical utility/guest cloakroom, completing this floor.

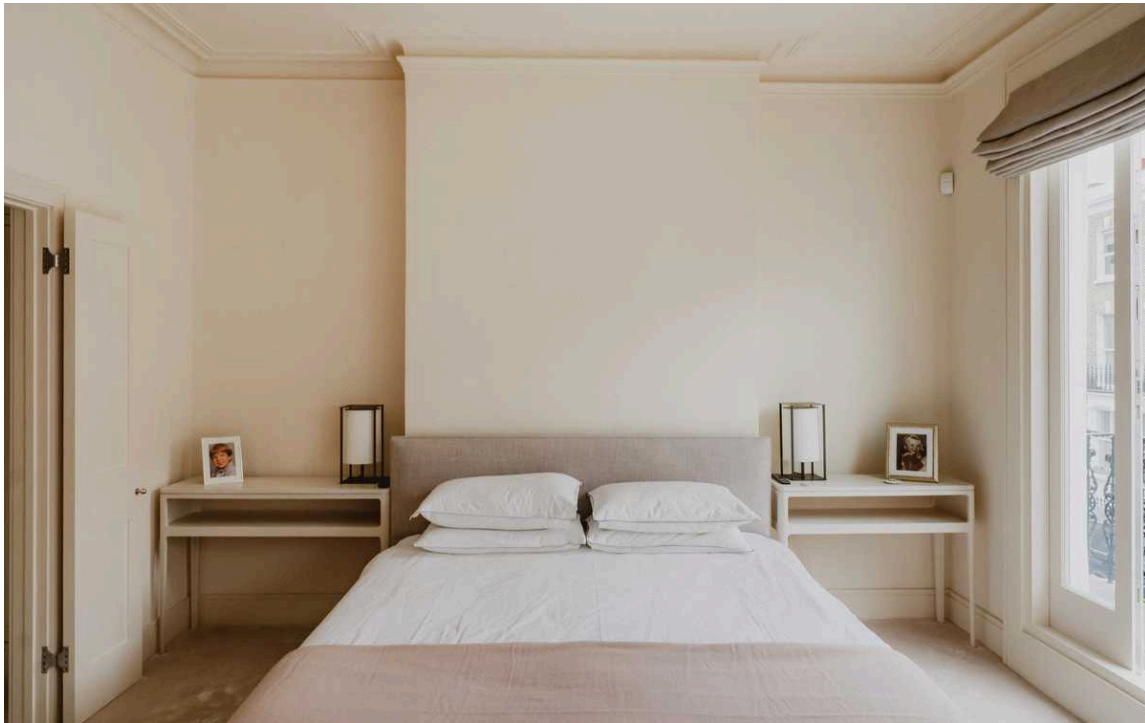




Indoor Spaces

The lower ground floor reveals a superb open-plan full length living space comprising a generous sitting room and dining area. This light-filled area flows seamlessly into a contemporary kitchen fitted with sleek units and a central island with breakfast bar seating. Large sliding doors from the kitchen provide direct access to the patio garden. The recently added basement level has a well-appointed bedroom with ensuite bathroom. This floor also features a dedicated gym space.





The Bedrooms

Ascending to the first floor, the principal bedroom offers a tranquil retreat with access to a private balcony. This floor is completed by a large en-suite bathroom and an additional family bathroom, both finished to a high standard with modern fixtures. The accommodation continues with two further bedrooms located on the half landing and second floor respectively, one of which benefits from an en-suite bathroom





Outdoor Spaces

The rear second floor landing provides access to a charming roof terrace offering elevated views across the surrounding rooftops. The property includes a delightful private patio garden accessed directly from the kitchen. The outdoor space features a seating area and is enhanced by climbing ivy, creating a peaceful retreat in the heart of the city.





The Neighbourhood

Redburn Street is a quiet residential address in the heart of Chelsea, SW3. This picturesque tree-lined street features elegant Victorian terraced houses with their characteristic colourful front doors and period architectural details. The location offers excellent access to the boutique shops and restaurants of the King's Road, while the green spaces of Chelsea Embankment and Battersea Park are within easy reach. Transport links include Sloane Square Underground station, providing convenient connections across London.

**RUSSELL
SIMPSON**

Contact Us

+44 (0) 20 7225 0277

151A Sydney Street
London
SW3 6NT

chelsea@russellsimpson.co.uk

In accordance with the Property Mis-Description Act 1991, the following details have been prepared in good faith, and are not intended to constitute part of an offer or contract. Any information contained herein (whether in the text, plans or photographs) is given in good faith but should not be relied upon as being a statement of representation of fact. Nothing in these Particulars shall be deemed to be a statement that the property is in good condition or otherwise nor that any services or facilities are in good working order. Any measurements of distances referred to herein are approximate only. October 2021