



**RUSSELL  
SIMPSON**

Portobello Road

PORTOBELLO ROAD  
LADBROKE SQUARE W11

Portobello Road

Sold

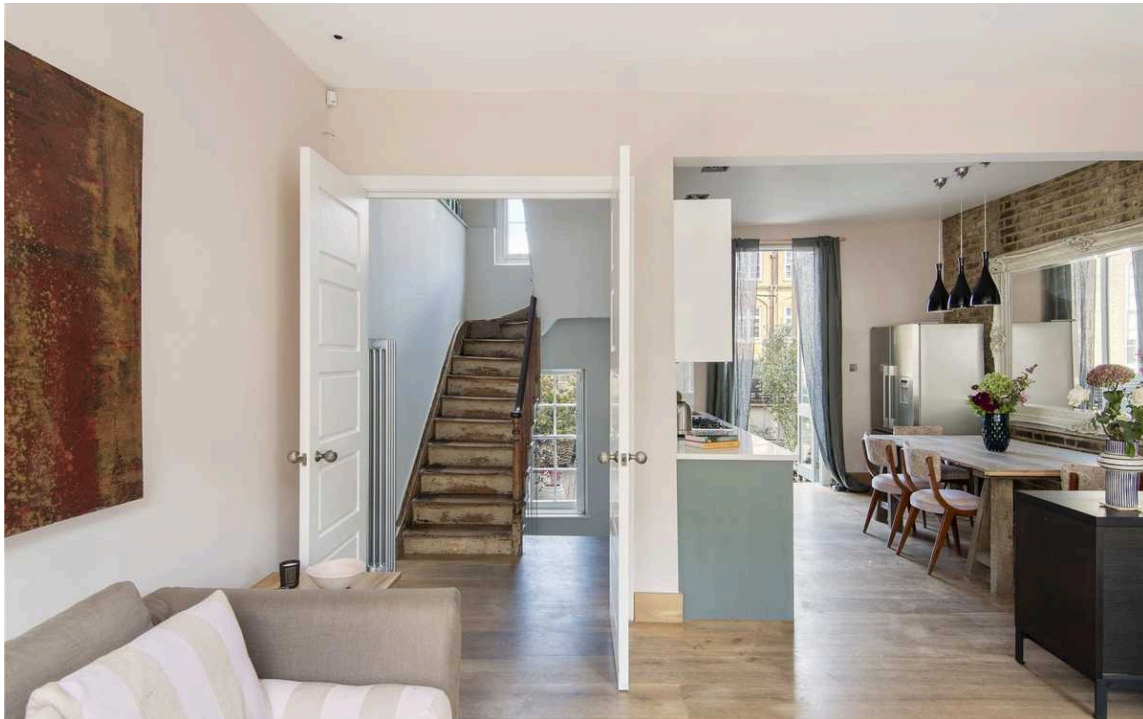
<div>BEDROOMS</div> <div>3-3</div>	<div>INTERNAL</div> <div>1,414 <small>SQ FT</small></div> <div>131 <small>SQM</small></div>	<div>OUTDOOR</div> <div>—</div>	<div>COUNCIL</div> <div>—</div>
<div>BATHROOMS</div> <div>2-2</div>		<div>EPC</div> <div>D</div>	<div>COUNCIL TAX</div> <div>—</div>
<div>TENURE</div> <div>Leasehold</div>	<div>LEASE LENGTH</div> <div>103 <small>YEARS</small></div>	<div>GROUND RENT</div> <div>£250 <small>P/Y</small></div>	<div>SERVICE CHARGE</div> <div>£250 <small>P/Y</small></div>



## The Property

Spanning across 1464 square feet, the flat benefits from its own private entrance.

On the first floor there is a stunning open plan living room/dining and kitchen with access to the spacious terrace at the rear which is great for entertaining. On the second floor there are two double bedrooms and a family bathroom. The principal bedroom en-suite is located on the top floor with beautiful vaulted ceiling.









## The Neighbourhood

Positioned on the famous Portobello Road which runs through the heart of Notting Hill, up to Goldborne Road station. The apartment is within easy walking distance from bus routes and Ladbroke Grove surrounded by many popular bars and restaurants. Notting Hill Gate station is also withing short distance.

**RUSSELL  
SIMPSON**

---

## Contact Us

+44 (0) 20 7225 0277

Contact us

[info@russellsimpson.co.uk](mailto:info@russellsimpson.co.uk)

---

## Sydney Street

+44 (0) 20 7225 0277

151A Sydney Street  
London  
SW3 6NT

[chelsea@russellsimpson.co.uk](mailto:chelsea@russellsimpson.co.uk)

---

## Kensington Square

+44 (0) 20 3761 9691

13 Kensington Square  
London  
W8 5HD

[kensington@russellsimpson.co.uk](mailto:kensington@russellsimpson.co.uk)