

RUSSELL SIMPSON

Unique modern house in Notting
Hill with four bedrooms and
sophisticated interiors

PEMBRIDGE CRESCENT
NOTTING HILL W11

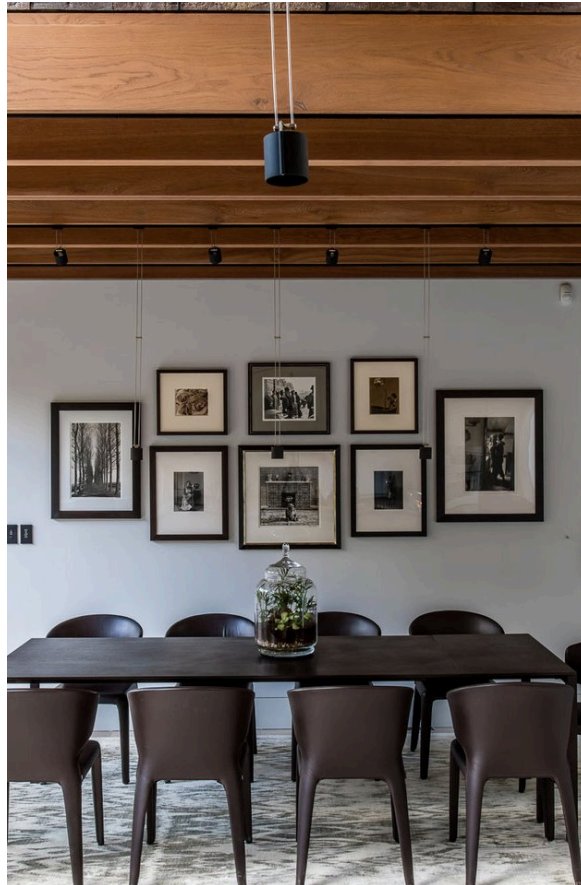
Pembridge Crescent

£14,000,000

<div>BEDROOMS</div> <div>4–6</div>	<div>INTERNAL</div> <div>5,042 <small>SQ FT</small></div> <div>468 <small>SQM</small></div>	<div>OUTDOOR</div> <div>867 <small>SQ FT</small></div>	<div>COUNCIL TAX</div> <div>RBKC, H</div>
<div>BATHROOMS</div> <div>5–5</div>		<div>EPC</div> <div>B</div>	<div>TENURE</div> <div>Freehold</div>

The Property

Unusually wide low-built property with light-filled rooms and stylish decoration in a secluded setting





Indoor Spaces

Entering the house on the ground floor, the front door opens onto a staircase hall. On one side is a lofty reception room with floor-to-ceiling windows, a fireplace and a French door leading through to the patio. On the other side is a generous open-plan kitchen with a breakfast bar island and dining area. More floor-to-ceiling windows and overhead skylights ensure this space is flooded with light throughout the day.

The basement provides a gym, a home office, a wine room with humidity and temperature control, two utility rooms, a bathroom and considerable storage space. There is air conditioning in the gym and the largest bedroom on the lower ground floor.



The Bedrooms

The first floor is entirely occupied by the principal bedroom suite. Along with the well-proportioned bedroom, this includes a pair of dressing rooms and a pair of bathrooms, as well as a beautiful ribbed roof.

The lower ground floor features three bedrooms. Two of these rooms have ensuite bathrooms and walk-in wardrobes, and all three have French doors leading onto the lower patio. In addition, the largest can be used as a living room or family room.





The Design

The property was recently built and sensitively designed to suit the surroundings. It is decorated in a contemporary style with outstanding attention to detail and sophisticated use of metal and wood materials. It includes underfloor heating.

[Read about how Philip Gumuchdjian created a unique contemporary home off Pembridge Crescent.](#)

The Neighbourhood

The property offers a pair of patios with enough space for outdoor seating.

Pembridge Crescent is a beautiful street lined with white stucco townhouses running parallel to the Portobello Road. This property is accessed via a private drive, leading to a secluded setting behind the street. From here, the many restaurants and independent boutiques of Notting Hill are close. In addition, Notting Hill Gate underground station is also nearby. Finally, the open spaces of Kensington Gardens and Hyde Park are a short walk away.



Pembridge Crescent, W11

**RUSSELL
SIMPSON**

Approximate Internal Area

5042 sq ft/ 468 sq m

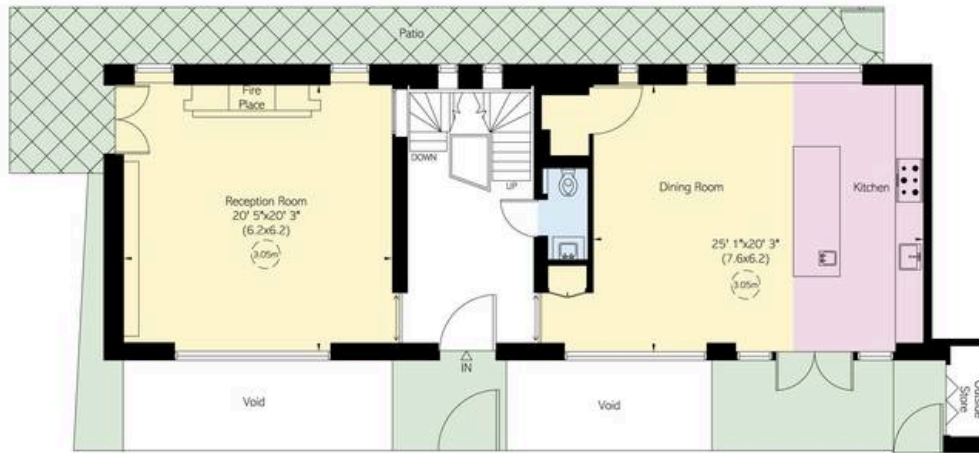
Including outside store

21 sq ft/ 2 sq m

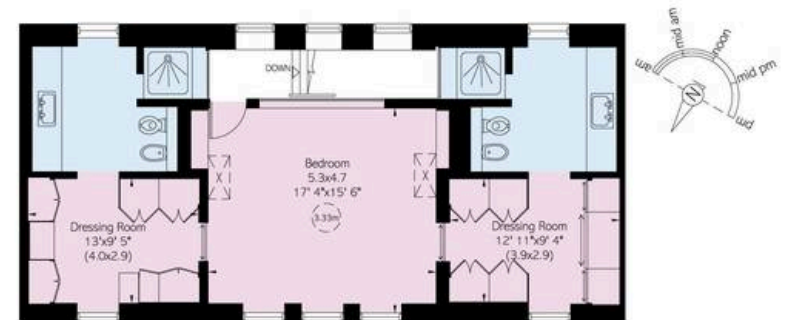
Outside Area

867 sq ft/ 81 sq m

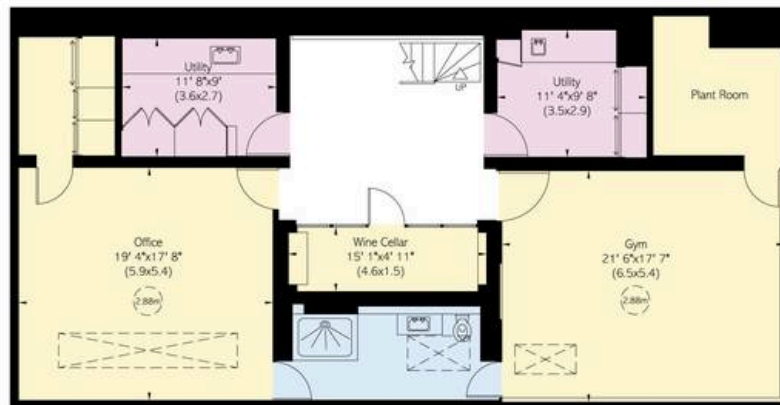
This plan is for layout guidance only. Not drawn to scale unless stated. Windows and door openings are approximate. Whilst every care is taken in the preparation of this plan, please check all dimensions, shapes, and compass bearings before making any decisions reliant upon them.



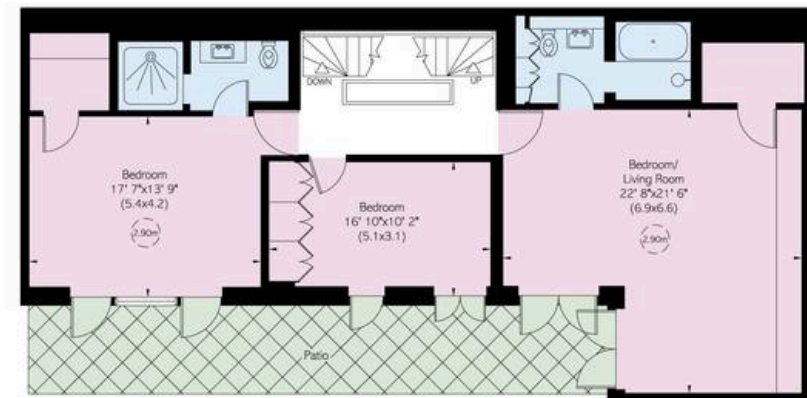
Ground Floor



First Floor



Basement



Lower Ground Floor

**RUSSELL
SIMPSON**

Contact Us

+44 (0) 20 3761 9691

13 Kensington Square
London
W8 5HD

kensington@russellsimpson.co.uk

In accordance with the Property Mis-Description Act 1991, the following details have been prepared in good faith, and are not intended to constitute part of an offer or contract. Any information contained herein (whether in the text, plans or photographs) is given in good faith but should not be relied upon as being a statement of representation of fact. Nothing in these Particulars shall be deemed to be a statement that the property is in good condition or otherwise nor that any services or facilities are in good working order. Any measurements of distances referred to herein are approximate only. October 2021